
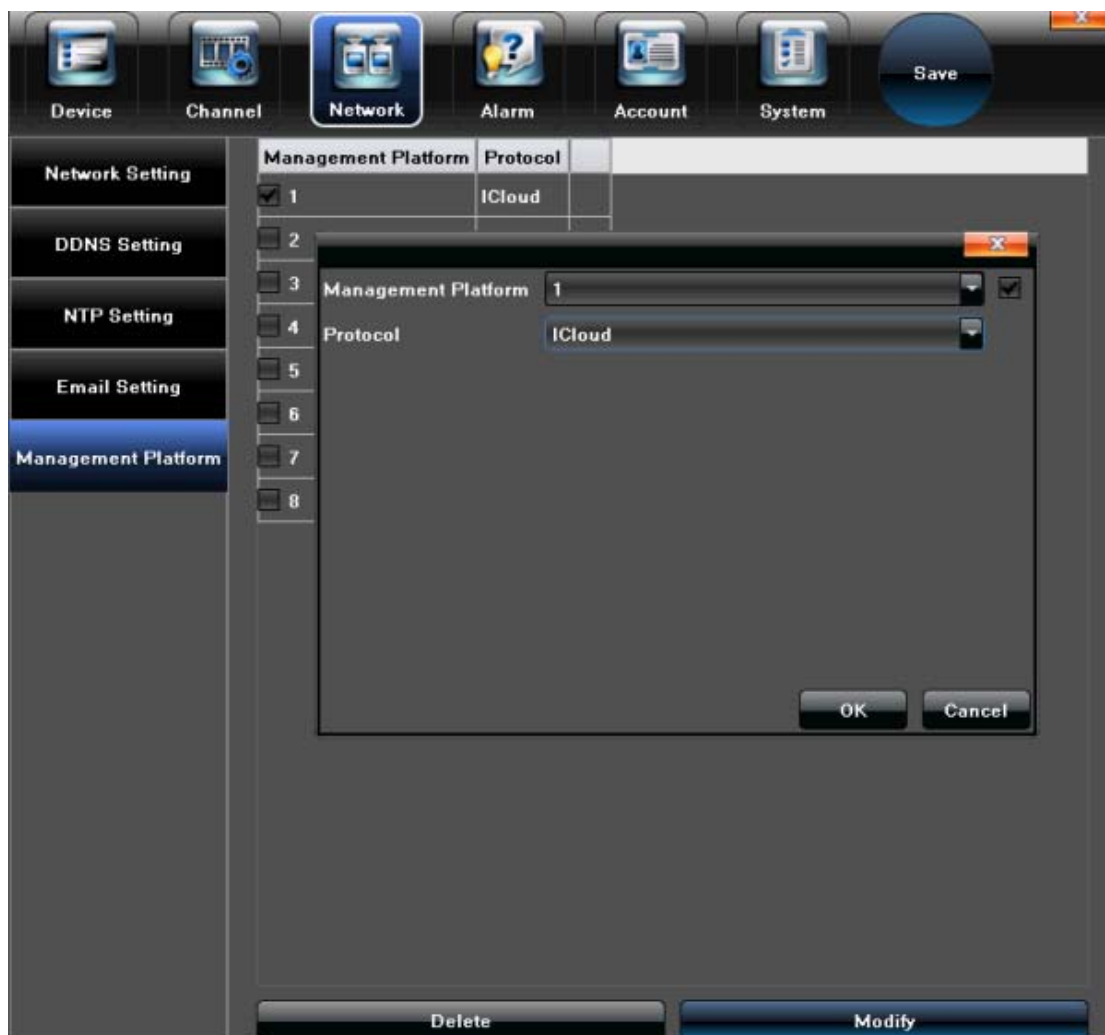

P2P Operation Manual

Chapter 1

1.1 P2P confirm

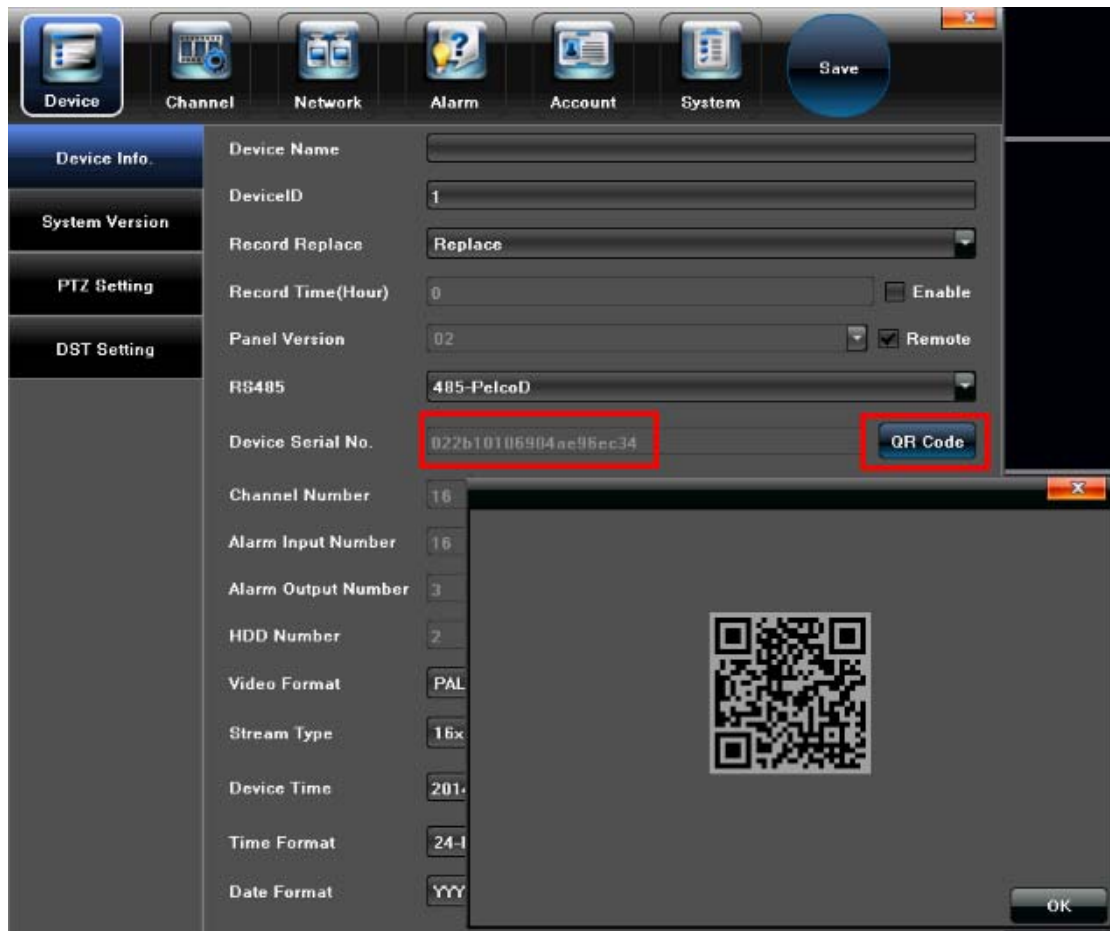
Login DVR/ NVR devices as usual, select **Setting---Network---Management Platform** to confirm whether the ICloud protocol internally installed.

Operation as follows,  check **ICloud** to open cloud serves.



1.2 Device Serial No.

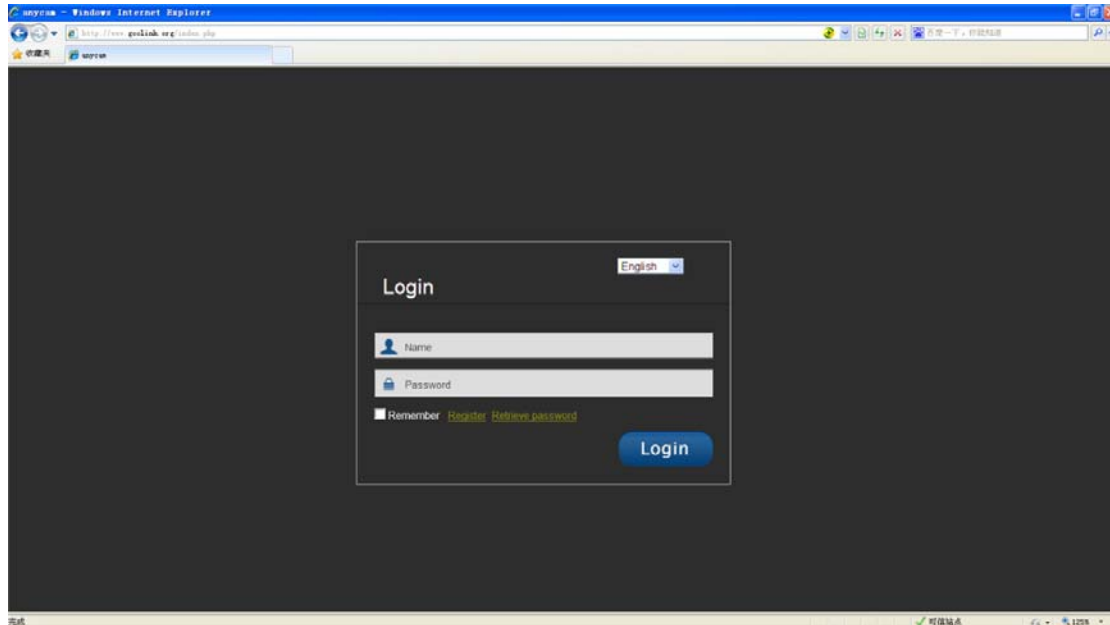
Devices serial no. is the only identification for ICloud sever to identify the corresponding devices, please verify the serial no. carefully to guarantee connect successfully. (It can start auto search function and QR Code function to quickly get the devices serial number for mobile client users)



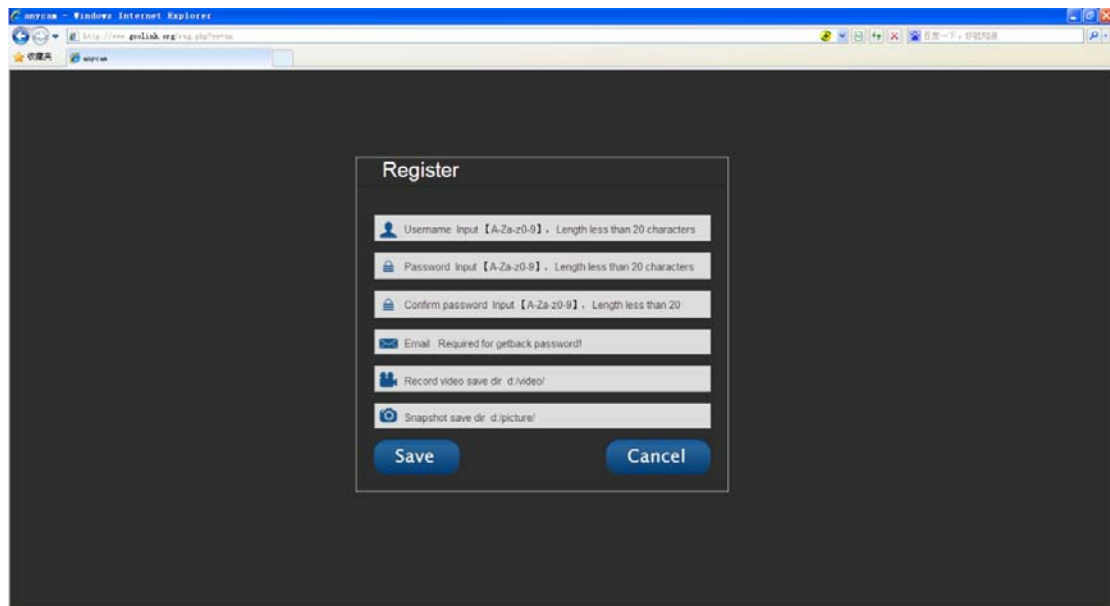
Chapter 2 P2P network operation

2.1 Register

Open a browser and type the P2P server URL in the address bar (<http://www.goolink.org>) to enter into Login interface, as illustrated in following figure.




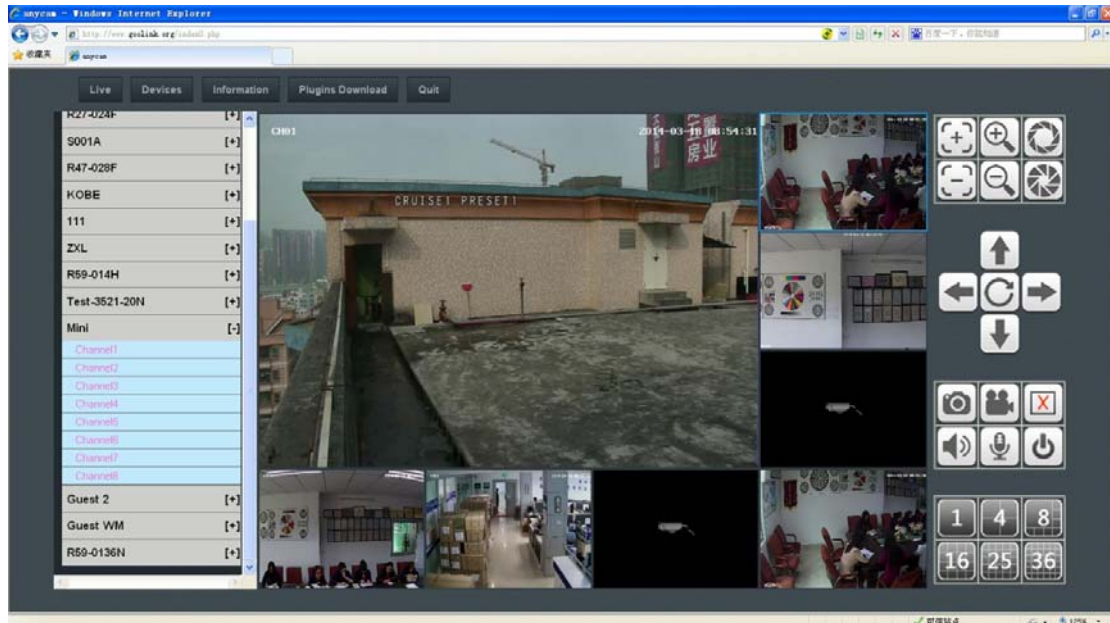
Click **Register**, then the following interface will pop-up.



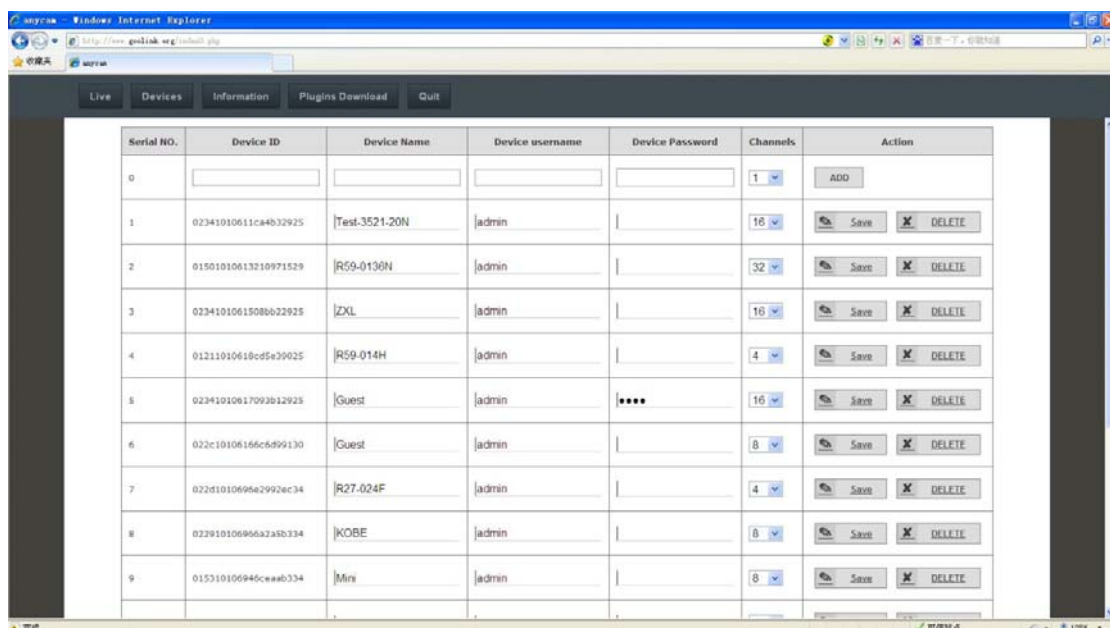
- 1.Username:User-defined
- 2.Password:User-defined
- 3.Confirm password: Keep the input password consistent
- 4.Snapshot save dir: Save the snapshot directory listing (Establish a folder in the corresponding directory)
- 5.Recorder video save dir: Save the recording video directory listing (Establish a folder in the corresponding directory)

2.2 Add equipment

Login with the successfully registered username and password. Click , then the following interface will pop-up.



Click **Devices** then the following interface will pop-up, add equipments as required.



Device ID: Input device serial number(You can view from the **Device Info.** in device **Setting**)

Device Name: User-defined

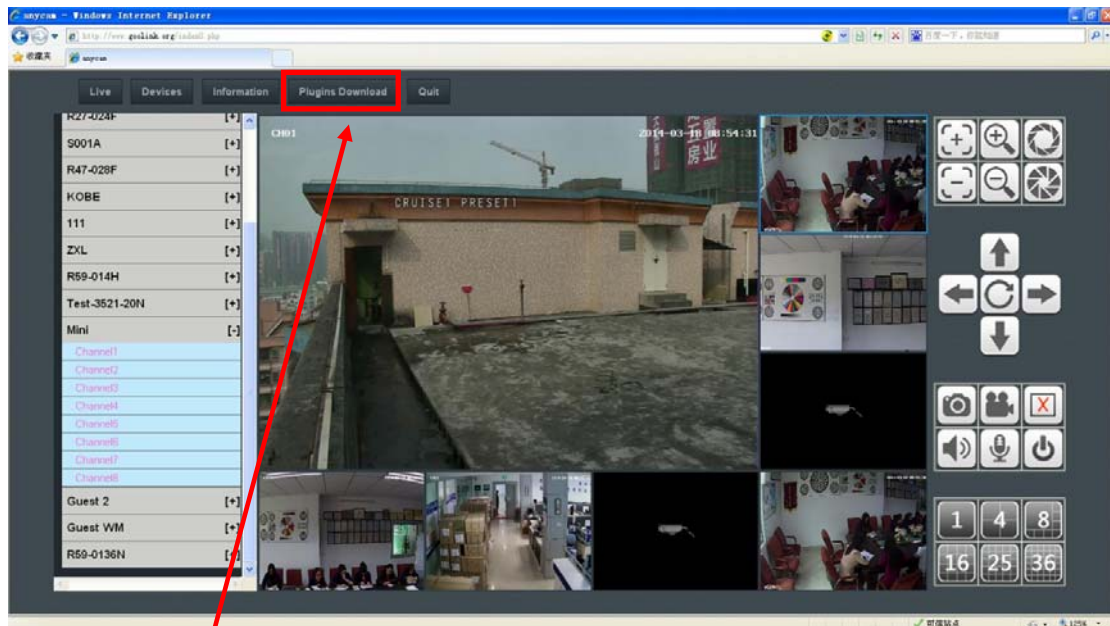
Device username/ Device Password: Input device corresponding user name and password to access

Channels: Select channel number

After setting completed, click **Save**, then the equipment added successfully.

2.3 Device access

Click **Live** to select the any corresponding channel to preview.

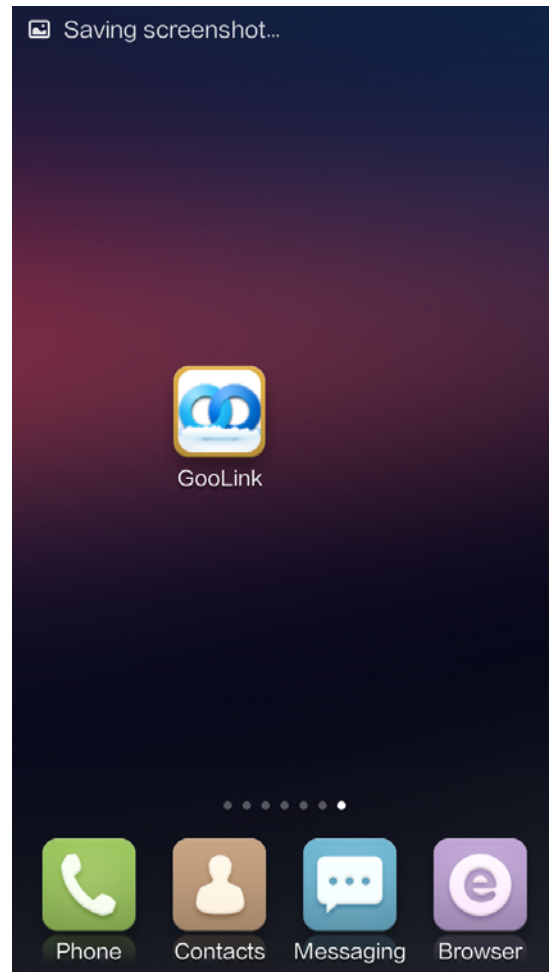


Notice: you need download plug-in file before video preview , if automatically download and install failed, please manually download and installation.

Chapter 3 P2P Mobile viewer

3.1 Software download and installation

Search **GooLink** in APP store,download and install the monitor software.

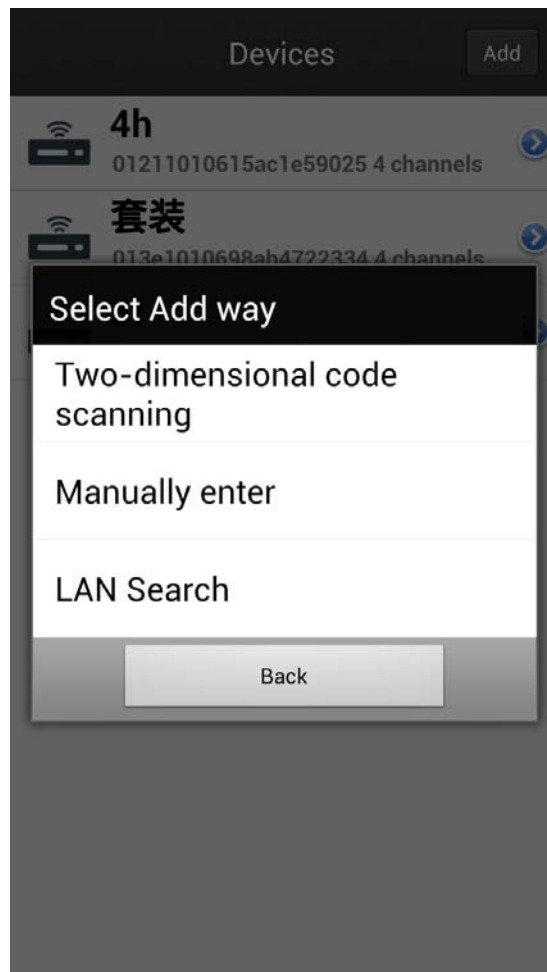


3.2 Using GooLink software

Start the GooLink software after installation completed.



Click device list button , a new window appears



QuickMark: Scan the QR code on the device menu to add equipment

Manual input: Manually input to add equipment

LanExplorer: Automatically search and add the local area network (LAN) device serial number

3.3 Manually add equipment

The screenshot shows a mobile application interface for adding equipment. At the top, there is a dark header with the text "4h" and an "Edit" button. Below the header is a form with four input fields: "Name" (containing "4h"), "UID" (containing "01211010615ac1e59025"), "User" (containing "admin"), and "Password" (containing "Password"). Below the password field is a "Channel Number" selector with a row of buttons: "auto", "1", "4", "8", "16", and "32". The "4" button is highlighted in blue, indicating it is the selected option.

Device Name: User-defined

UID: Input the device serial number

Device username/ Device Password: Input device corresponding user name and password to access

Channels: Select channel number

3.4 Device access

Select any corresponding channels to preview.

