

TRUE X 900A



NEW PRODUCT BULLETIN



ABOVE. AND BEYOND

Introducing the TRUEX90A from Yamaha, a pioneer in AVR technology. Created with a deep understanding of what makes a true home theatre experience, this soundbar features Yamaha's exclusive YSP beam speaker technology to deliver an unparalleled sense of height to the sound field.

Experience an entirely new level of immersive 3D sound.



BEAM SPEAKER TECHNOLOGY, REDEFINED

Over twenty years ago, we re-invented home theatre with the YSP-1 soundbar, and have been refining beam technology ever since. In this latest model, Yamaha's original YDA-141 high-performance amplifier with twelve ultra-precise DSP-controlled beam speakers mounted on the top (six on each side) create unique height channels with ceiling reflections. With realistic Dolby Atmos® playback, it delivers an amazing sound field that surpasses conventional soundbars.



NOT A SUCCESSOR, BUT AN INNOVATOR

TRUEX90A is a wireless surround sound system that brings new innovations to home cinema. With a slim-bodied soundbar just 71mm tall, it features multiple, meticulously selected speaker units, encased in a sturdy, highly rigid cabinet supported by large resin legs with a substantial contact area—exceptionally solid build quality for an audio device. In addition, combining a subwoofer boasting new Symmetrical Flare Port® technology with two fully wireless rear speakers featuring built-in battery power provides unprecedented flexibility and a profoundly authentic cinematic experience.



ELEGANTLY SHAPED, PERFECTLY TUNED

The custom eye-shaped oval speakers are key to creating a slim soundbar with distortion-free, immersive surround sound. These speakers deliver rich midrange tones and powerful volume with fewer units, ensuring a clear, natural sound field without acoustic interference. By optimising the speakers' structure and magnetic circuitry, we overcame challenges like cone strength and high-frequency clarity, resulting in distortion-free, immersive sound. The outcome is a soundbar that offers a sleek design and powerful, balanced sound for an exceptional listening experience.



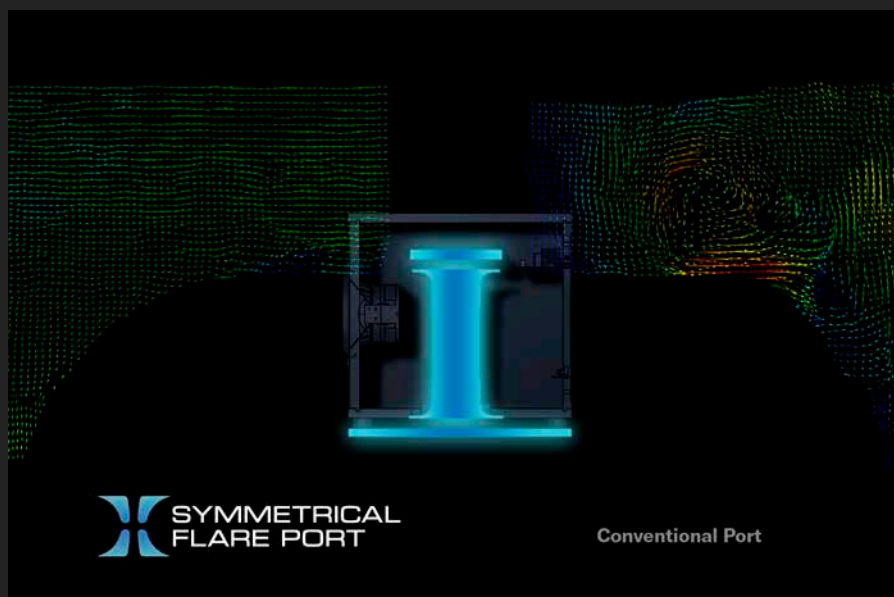
SURROUND: *ai*

PREMIUM COMPONENTS, ULTIMATE PERFORMANCE

SURROUND:AI™ technology employs cutting-edge audio processing performance, thanks to the Qualcomm® QCS407 64-bit SoC (System-on-a chip), used in our flagship model of the AVENTAGE Series AV receivers. Yamaha's unique surround sound features automatically generate the ideal sound field effect depending on the movie scene, as if a team of Yamaha professional sound engineers were fine-tuning the audio for each scene.

FEEL THE DEPTH, HEAR THE POWER

The subwoofer of this system employs Symmetrical Flare Port® technology, newly developed through meticulous Particle Image Velocimetry (PIV) measurements—delivering powerful, deeply resonant bass. The symmetrical horizontal/vertical port structure ensures extremely smooth release of the strong air flow generated during bass reproduction. As a result, port noise has been reduced by 20 dB compared to conventional models, enabling pure bass reproduction that is both powerful and deep.



**SYMMETRICAL
FLARE PORT**

Conventional Port



WHERE TRUE SOUND COMES TO LIFE

With a history spanning over 130 years and being one of the world's largest manufacturers of musical instruments, Yamaha fully understands the very moment of sound creation, and continues to be relied upon by world-famous artists for its audio expertise and live mixing consoles. In addition, we maintain first-class research and development capabilities in all fields related to sound and music, and we have brought our long experience and extensive knowledge to sound creation in the TRUEX90A.

OTHER FEATURES



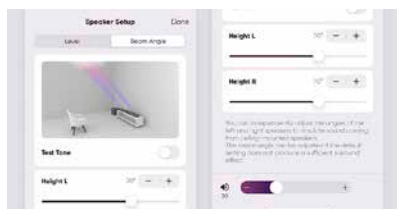
YAMAHA'S UNIQUE NETWORK FUNCTION MusicCast

The TRUEX90A is equipped with Yamaha's original MusicCast network system. Moreover, it is compatible with a variety of streaming services such as Amazon Music HD and Spotify, letting you fully enjoy exceptionally high-quality sound unique to today's high-resolution and lossless sound sources, with complete fidelity. You can also use it to stream Apple Music with AirPlay2. And the MusicCast system lets you easily listen to music anywhere in your home by linking various MusicCast devices with just one app on your smart device.



STATE-OF-THE ART AUDIO PROCESSING "AURO-3D®"

TRUEX90A is not only amazing for movies, but also music and live concert videos. As the world's first AURO-3D® soundbar, it takes full advantage of the height beams and creates a sense of realism as if you were actually experiencing a live performance in a concert hall. In addition, even stereo video content can be achieved with great effect thanks to the AURO-3D® Auto-Matic upmixer function, creating a three-dimensional sound field.



ADVANCED APP CONTROL

The height beam angles and volume levels can be easily adjusted using the dedicated MusicCast app, which also provides basic control of the soundbar.



FLEXIBLE MUSIC PLAYBACK

The True X Speaker features built-in battery power, making it perfect for a completely wireless rear speaker, and can double as a Bluetooth® speaker with a simple touch of a button. Take it anywhere you like and enjoy all the music on your smartphone with high sound quality.



WALL HANGING

Simply remove the legs from the center unit, and it can be easily wall-mounted using the included metal fittings. Just 71mm in height and 143mm in depth, it does not disturb the interior of the room even when hung on the wall.



CLEAR VOICE & BASS EXTENSION

The unique and switchable Clear Voice feature makes it easier to hear and understand voices and dialogue. Bass Extension also adds body and depth to the bass while keeping the mids and highs clean, making movies even more immersive.



EASY CONNECTIVITY

Compatible with eARC and CEC, the system can be connected to the TV with a single HDMI cable, while power on/off and volume can be controlled with your TV remote.

SPECIFICATIONS

CENTRE UNIT



Front Speaker System

Maximum Output Power	Front L/R 100 W x 2 [1-ch driven, JEITA], Center 100 W [1-ch driven, JEITA], Height L/R 2.5 W x 12 [1-ch driven, JEITA]	
Driver Unit	Front L/R	(Full Range) Type; Enclosed type [non-magnetic shielding], Speaker unit; 11 × 5.3cm cone × 2, Playback frequency range; 120 Hz ~ 3.2 kHz, Impedance; 6 Ω
	Centre	(Tweeter) Type; Enclosed type [magnetic shielding], Speaker unit; 2.5cm dome × 2, Playback frequency range; 3.2 kHz ~ 20 kHz, Impedance; 6 Ω
	Height	(Full Range) Type; Enclosed type [non-magnetic shielding], Speaker unit; 11 × 5.3cm cone × 2, Playback frequency range; 120 Hz ~ 3.2 kHz, Impedance; 6 Ω
		(Tweeter) Type; Enclosed type [magnetic shielding], Speaker unit; 2.5cm dome, Playback frequency range; 3.2 kHz ~ 20 kHz, Impedance; 6 Ω
		Type; Enclosed type [magnetic shielding], Speaker unit; 2.8cm cone x 12, Playback frequency range; 500 Hz ~ 20 kHz, Impedance; 4 Ω
Frequency Response	120 Hz ~ 20 kHz	
Terminals	(Inputs) HDMI: 1, Optical Digital: 1 (Output) HDMI: 1 [ARC/eARC] (Network) Bluetooth®: 1, Wireless Lan (Wi-Fi) 1, Wireless Output (for wireless subwoofer and speakers): 1	
Standby Power Consumption	0.5 W (HDMI-CEC off, Network standby off), 2.0 W (HDMI-CEC on, Network standby off)	
Dimensions (W x H x D)	1180 x 85 x 143mm	
Weight	11.0kg	

SUBWOOFER



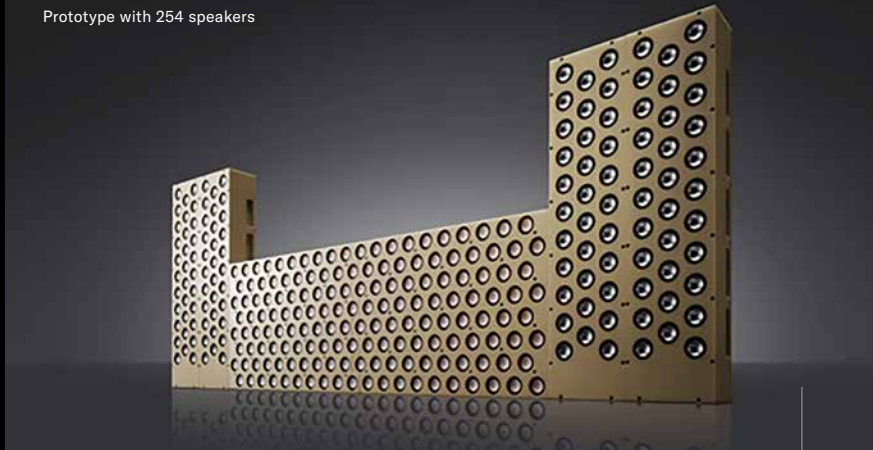
Type	Bass-reflex
Maximum Rated Power	100 W (3 ohms, 10% THD)
Driver Unit	17cm cone type
Input	Wireless input: 1
Frequency Response	33 Hz ~ 120 Hz
Dimensions (W x H x D)	241 x 378 x 414mm
Weight	12.7kg

SURROUND SPEAKERS



Maximum Output Power	10 W x 2 (1 kHz, 10% THD)
Driver Unit	5.8cm Full-range x 2, Passive radiator x 2
Frequency Response	55 Hz ~ 20 kHz
Terminals	(Inputs) USB Type C
Network	Bluetooth® (Ver.5.0), Wireless (5.8 GHz)
Power Supply	USB Type C or Charging terminal (CC-T1A)
Built-in Battery	Battery life: 12 hours (Charging time: 4 hours)
Dimensions (W x H x D)	88 x 220 x 88mm
Weight	0.99kg

Prototype with 254 speakers



THE ORIGINAL BEAM SPEAKER TECHNOLOGY. YAMAHA CREATED IT

Other manufacturers have adopted Beam Speaker technology for their soundbars, but Yamaha was the very first company in the world to successfully commercialise this technology for home use. Moreover, Yamaha's beam speaker technology, which uses digital signal processing to control multiple speakers with exceptional precision to create a beam of sound, is highly directional and uniquely capable of reproducing an astoundingly realistic sound field.



THE WORLD'S FIRST SURROUND SOUNDBAR—THE YSP-1

It has now been over twenty years since the first model YSP-1 was released in 2004. Yamaha has constantly progressed and advanced in its beam speaker technology through development of a variety of soundbars—including the YSP-5100, a model equipped with a whopping 44 beam speakers, and the YSP-5600, the world's first soundbar equipped with height speakers that are compatible with Real Dolby Atmos® playback. This new TRUEX90A surround system inherits and takes full advantage of technology and know-how gained during development of this innovative technology.

