



# T500 5" 4K HD CCTV CAMERA TESTER

## THE ULTIMATE CCTV TESTER JUST GOT BETTER

If you are in the business of installing and configuring CCTV systems, then the Doss T500 is the only tool you will ever need to troubleshoot, setup and perfect any security installation. Not only that, but with all the tools built-in to the unit, you can troubleshoot network issues, cabling and more.

- The perfect tool for CCTV system installation and maintenance
- 5" Full HD (1920x1080) IPS touchscreen interface
- Supports more protocols than the majority of testers on the market: IP / TVI / CVI / AHD / SDI / ONVIF
- Built-in Wi-Fi
- Easy to use GUI
- Built-in 7.4V 3350mAh Li-ion Polymer battery
- Support for the latest CCTV technologies including 4K cameras, H.265 compression and more
- Video transmission channel testing
- ONVIF PTZ and analog PTZ control
- TDR cable testing
- Digital multimeter
- UTP cable test
- Cable scan and much more!



Brand	DOSS
Model	T500
Order Code	43150565
EAN	9328202032812
Unit	Each
Box Qty	10

## A WEALTH OF CONNECTIONS!

### TOP

- HD-SDI, EX-SDI
- LED Flash light
- RJ45 LAN port or POE output
- HDMI in
- Micro SD card slot (Not included)
- AHD/CVI/TVI/ CVBS in
- 12V 3A DC output

### BOTTOM

- 12V DC input
- RS485
- 3.5mm audio input
- RJ45 - UTP/SCAN
- VGA port

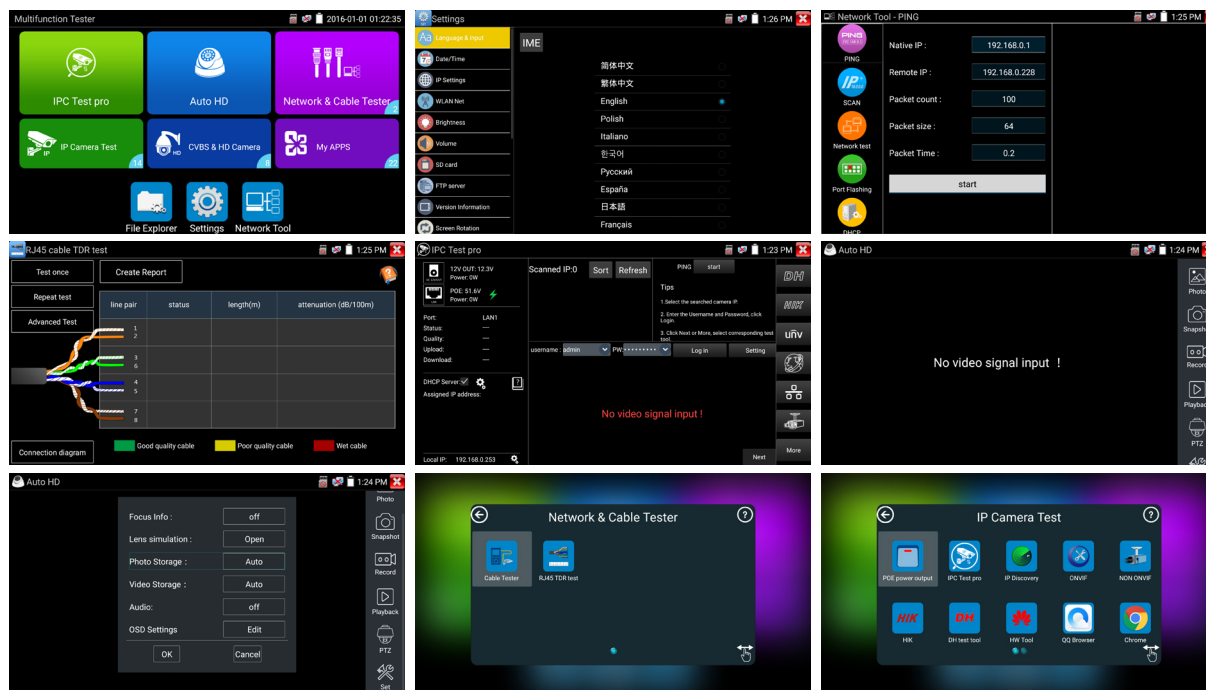
## IN THE BOX

- Tester
- Adaptor DC12V 2A
- Network cable tester
- BNC cable
- RS485 cable
- DC12V Power cable
- Audio cable
- Carry bag and straps



## A WEALTH OF INFORMATION

Enjoy a 5" full HD IPS touch screen to view and navigate your way through a large number of apps and settings to make any security installation job a hitch.



## SPECIFICATIONS [SEE PRODUCT PAGE FOR FULL SPECS]

Display	5" IPS touch screen, 1920x1080 resolution	
Video Mode	CVBS	1 channel BNC input & NTSC/PAL (Auto adapt) PTZ control, RS485 control, Baud 600-115200bps, compatible with more than 30 protocols such as PELCO-D/P, Samsung, Panasonic etc. CVBS loop test: the tester send and receive Colour bar generator signal , check BNC cable
	IP camera test 4k/H.265/H.264	IP Discovery / Quick ONVIF / IPC test / RTSP play / Client APK Rapid Video: Auto view the video, create testing report HIKVISION test tool: support batch activate HIKVISION cameras and modify IP address, modify password etc. Self-defined modify channel name, can quickly change H.264 and H.265 video, open wide dynamic mode, Factory restore, etc. DAHUA test tool: support batch activate DAHUA cameras and modify IP address, username and password. Self-defined modify channel name.
	Coaxial HD test	8MP TVI camera test, 3840x2160p 12.5/15 FPS, UTC control / call OSD menu 8MP CVI camera test, 3840x2160p 12.5/15 FPS, UTC control / call OSD menu 8MP AHD test, 3840x2160p 15FPS, UTC control / call OSD menu 8MP EX-SDI, HD-SDI, 3G-SDI, UTC control / call OSD menu
	HDMI input	1 channel HDMI input, support 4K 3840x2160 30fps
	VGA input	1 channel VGA input, support 1920x1200p 60fps
	Power Output	DC12V /3A power output / PoE power output: 48V PoE power output, max power 25.5W
	Cable test	UTP cable test Test UTP cable connection status and display on the screen. Read the number on the screen
RJ45 cable TDR test	Test cable pair status, length, attenuation, reflectivity, impedance, skew etc. measurement range 180m.	
Network test	Trace route, Link monitor, DHCP server, Port flashing, Ping test	
Wi-Fi	Built in Wi-Fi, speeds 150Mbps, display wireless camera image	
Audio test	1 channel audio signal input, test whether sound normal	
Powered by	DC 12V 2A / Built-in 7.4V Li-ion battery, 3350mAh (Fast charging, after charging 3-5 hours, normal working time 6 hours)	
Dimension/Weight	183mm x 110mm x 36.5mm / 320g	