

## 1.INPUT/输入特性

1.1 Input voltage rating/额定输入电压范围:	100-240V AC	3377 4605
1.2 Input voltage range/输入电压范围:	90-264V AC	
1.3 Input frequency rating/额定输入频率:	60/50 Hz	
1.4 Input frequency range/输入频率范围:	63/47 Hz	
1.5 AC input current/最大输入电流:	0.9 A Max .@100V AC	
1.6 AC input power saving/输入空载功率:	0.3 W Max .@230V AC at no load	
1.7 Inrush Current/最大浪涌电流:	60 A Max .@100VAC (Cold start/冷启动)	
	90 A Max .@230VAC (Cold start/冷启动)	
1.8 Leakage current/最大漏电流:	0.25mA Max	

## 2. Output characteristics/输出特性

2.1 Output voltage/输出电压:	5 V
2.2 Max. load current/最大负载电流:	6.8 A
2.3 Min. load current/最小负载电流:	0 A
2.4 Output no-load voltage/输出空载电压:	5 V± 5%
2.5 Output full load voltage/输出满载电压:	5 V± 5%
2.6 Output ripple & noise/输出纹波与噪声:	250 mV max.

Measurement is done by 20 MHz bandwidth oscilloscope and the output paralleled a 0.1 uF ceramic capacitor and a 10 uF electrolysis capacitor.

量测时示波器选用20MHz带宽限制，输出端要并联一颗0.1uF的陶瓷电容和一颗10uF的电解电容。

## 3. General characteristics/一般特性

3.1 Total output power/额定总输出功率:	34 Watts
3.2 Average Efficiency / 平均效率:	While input 115Vac and 230Vac, the average efficiency is more than 84.42% .The test point is at 25%,50%,75% and 100% of max load respectively. V 级 在输入115Vac和230Vac条件下，平均效率不小于 84.42% 测试点分别是最大载的25%, 50%, 75% 和 100%. 测试要求电源满载预热30分钟测试.
3.3 Short circuit protection/短路保护:	A Short circuit placed on DC output shall cause no damage or auto-recovery the power supply. 输出短路时电源不会损坏或自动还原供电.
3.4 Over Voltage Protection/过压保护:	When overvoltage occurs on DC output shall cause no damage or auto-recovery the power supply. 输出过压发生时电源不会损坏或自动还原供电.

#### 4. Environment/环境:

4.1 Operating temperature/:操作温度	0~40°C
4.2 Storage temperature/:存储温度	-25°C to 70°C
4.3 Operating humidity/:环境湿度	8% to 90%
4.4 Storage humidity/:存储湿度	5% to 95%

#### 5. Application safety standard : meet/应用安全标准

<input type="checkbox"/> UL 60950	<input checked="" type="checkbox"/> EN 60950	<input checked="" type="checkbox"/> AS/NZS 60950	<input type="checkbox"/> J60950	<input type="checkbox"/> K60950
<input type="checkbox"/> UL 60065	<input type="checkbox"/> EN 60065	<input type="checkbox"/> AS/NZS 60065	<input type="checkbox"/> J60065	
<input type="checkbox"/> UL 1310	<input type="checkbox"/> EN 60335	<input type="checkbox"/> GB4943	<input type="checkbox"/> J61558	
	<input type="checkbox"/> EN 61558	<input type="checkbox"/> GB8898		

#### 6. EMC standard /电磁干扰标准:

##### 6.1 EMI standard / EMI 标准:

<input type="checkbox"/> FCC Part 15 Class B	<input type="checkbox"/> GB 9254-2008	<input type="checkbox"/> J55022
<input checked="" type="checkbox"/> EN 55022: 2010+AC:2011	<input type="checkbox"/> GB 17625.1-2012	<input type="checkbox"/> J55013
<input type="checkbox"/> EN 55013: 2013		

##### 6.2 EMS standard / EMS 标准:

<input checked="" type="checkbox"/> EN 61000-4-2/ESD静电耐受测试	<input checked="" type="checkbox"/> EN 61000-4-5/Surge点击波耐受测试
<input checked="" type="checkbox"/> EN 61000-4-3/RS辐射场强耐受测试	<input checked="" type="checkbox"/> EN 61000-4-6/CS传导场强耐受测试
<input checked="" type="checkbox"/> EN 61000-4-4/EFT/Burst瞬间脉冲耐受测试	

#### 7. HI-POT test/高压测试

(1)Primary to secondary/:初级对次级	4525VDC for 3sec. 5mA(production testing)
	4242VDC for 1min. 5mA(Sample testing)
(2)Primary to case/:初级对外壳 (only for metal case )/只适用于金属外壳	4525VDC for 3sec 5mA(Production test)

#### 8. Insulation resistance /绝缘电阻

Input to output/输入对输出:	>10Mohm.@500VDC
------------------------	-----------------

#### 9. Reliability:/ 可靠性

9.1 MTBF/平均故障间隔时间:	50K hours min. @full load at 25°C ambient temperature.
9.2 Burn-in/烘烤:	2-4hours,25~45°C ,Input 220VAC,Output 80% load .
9.3 Altitude: Will operate properly at altitude between 0 to 6000ft 正常运转在0到6000英尺之间的高度.	

## 10. Mechanical/ 机械结构

10.1 Dimensions/尺寸:Please see the mechanical dimension drawing./请参见机械尺寸图

10.2 Weight/重量: 148 g

## 11. Mechanical specification/机械参数:

11.1 Drop test/落地测试: The height of 1 M, frequency 1 drop per face.

dropping surface on concrete floor judgment standard:No function fail & no cabinet joint broken.

11.2 Bending test: With load 200g, then bend  $\pm 60$  degree at ratio of 45times/minute.

摇摆试验:吊重200 g,然后折弯 $\pm 60$ 度,频率按45次/分钟.

16AWG	-----	5000cycles Min
18AWG	-----	4500cycles Min
20AWG	-----	2400cycles Min
22AWG	-----	2000cycles Min
24AWG	-----	1500cycles Min
26AWG	-----	1000cycles Min

11.3AC plug drawing/输入插头图面: Attached/附图

11.4AC cable drawing/输入线图面: Attached/附图

11.5DC cable drawing/输出线图面: Attached/附图

11.6Outline drawing/外观图面: Attached/附图

11.7Label drawing/铭牌图面: Attached/附图

11.8Package drawing/包装图面: Attached/附图

## SAMPLE PRIMARY TEST REPORT/样品初测报告

MODEL NO./产品型号: E034H-050680-Z

TEST BY/测试人: 李景扬

Test Items./测试项目	Test Condition /测试条件	Unit/单位	Sample quantity and test result/样品数量和测试结果								Pass /Fail
			USB1+USB2	USB3+USB4							
Unload output voltage/ 空载输出电压 (0.0A) 4.75vdc - 5.25vdc	90Vac	V	5.17	5.17							PASS
	115Vac	V	5.17	5.17							PASS
	230Vac	V	5.17	5.17							PASS
	264Vac	V	5.17	5.17							PASS
Rated load output voltage/ 额定负载输出电压 ( 3.4 A) 4.75vdc - 5.25vdc	90Vac	V	4.97	4.99							PASS
	115Vac	V	4.97	4.99							PASS
	230Vac	V	4.97	4.99							PASS
	264Vac	V	4.97	4.99							PASS
Output ripple & noise voltage (Full load)/输出 纹波及噪 声电压(满载) ≤ 250mV	90Vac	mV	113	125							PASS
	115Vac	mV	88	102							PASS
	230Vac	mV	89	107							PASS
	264Vac	mV	91	106							PASS
Short-circuit protection test/短路保护测试	90Vac	W	7.27	7.32							PASS
	264Vac	W	5.54	9.56							PASS
Over current protection/ 过流保护点 ≤ 4.5 A)	90Vac	A	4.00	3.80							PASS
	264Vac	A	4.00	3.80							PASS
IC Vcc voltage test/ Vcc电压测试 (规格 ≤ 27V)	90Vac	V	19.20	19.20							PASS
	264Vac	V	19.10	19.10							PASS
Hi-pot test/介电强度	4242Vdc/5mA/ 1Minute		OK	OK							PASS
Appearance/外观	无刮伤,字迹清晰 无误		OK	OK							PASS
Mosfet(IC)/Vds耐压测试	264Vac	V	569	Mosfet规格	600	Derating ≤ 95% Max. Volt.	94.83%	PASS			
输出肖特基D/Vrr耐压测试	264Vac	V	33	Diode规格	40	Derating ≤ 90% Max. Volt.	82.50%	PASS			
变压器反馈绕组上所连接电 阻(R)功率损耗(PD)	90Vac	P	-	R(功率)规格	-	Derating ≤ 65% Max Power	-	PASS			
	264Vac	P	-	R(功率)规格	-	Derating ≤ 65% Max Power	-	PASS			

E0-3-011 G/1

## CEC/ERP 2 test/能效测试

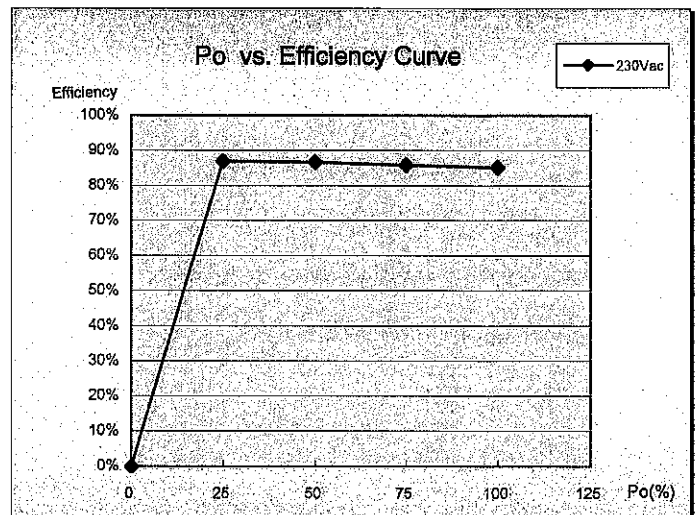
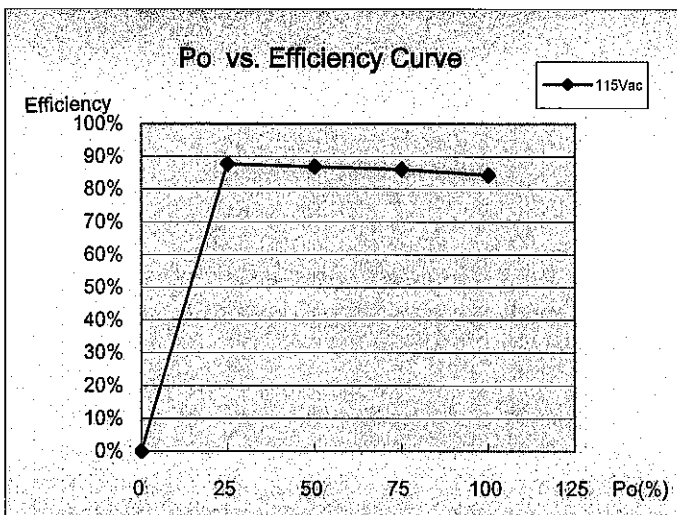
MODEL NO./产品型号: 034H-050680-Z

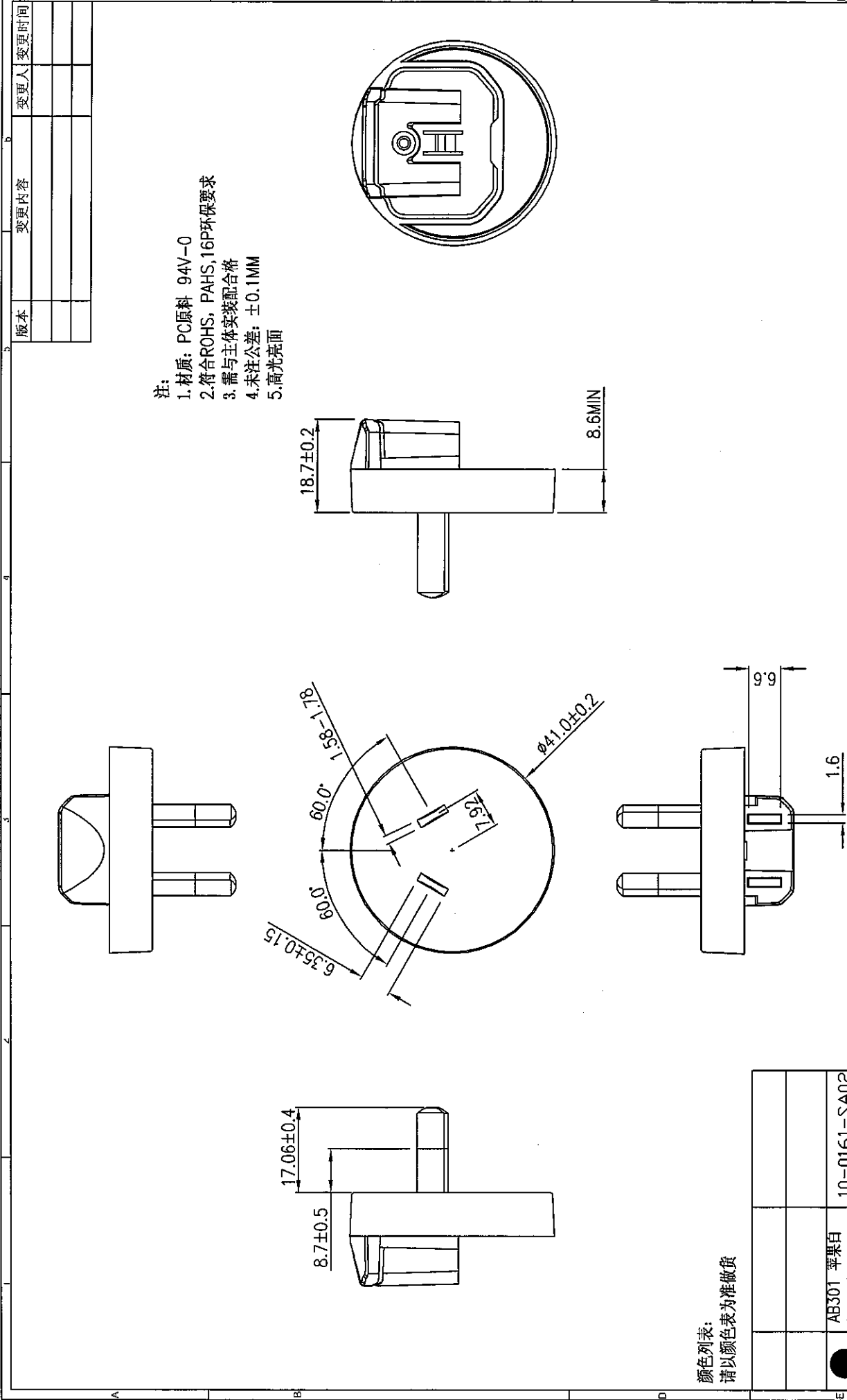
TEST BY/测试人: 李景扬

Environment : ● Ambient ○ High ○ Low : 25°C

Test Condition: Vac=115V/230V ,Load :0~100% step Load :25%

1 Vin: 115Vac/60Hz								1 Vin: 230Vac/50Hz							
Load (%)	Vout(V)	Iout(A)	PF	Pin(w)	Po(w)	Efficiency	Result	Load (%)	Vout(V)	Iout(A)	PF	Pin(w)	Po(w)	Efficiency	Result
0	5.17	0.000	---	0.094	0	0.00%	<b>PASS</b>	0	5.17	0.000	---	0.131	0	0.00%	<b>PASS</b>
25	5.10	1.700	---	9.87	8.67	87.84%	---	25	5.10	1.700	---	9.96	8.67	87.05%	---
50	5.03	3.400	---	19.67	17.102	86.94%	---	50	5.03	3.400	---	19.7	17.102	86.81%	---
75	4.97	5.100	---	29.43	25.347	86.13%	---	75	4.97	5.100	---	29.47	25.347	86.01%	---
100	4.90	6.800	---	39.51	33.32	84.33%	---	100	4.90	6.800	---	39.08	33.32	85.26%	---
Po_typical (w)				34		Average <b>86.31%</b> <b>PASS</b>		Po_typical (w)				34		Average <b>86.28%</b> <b>PASS</b>	
						<b>Spec. 84.42%</b> <b>V</b>								<b>Spec. 84.42%</b> <b>V</b>	



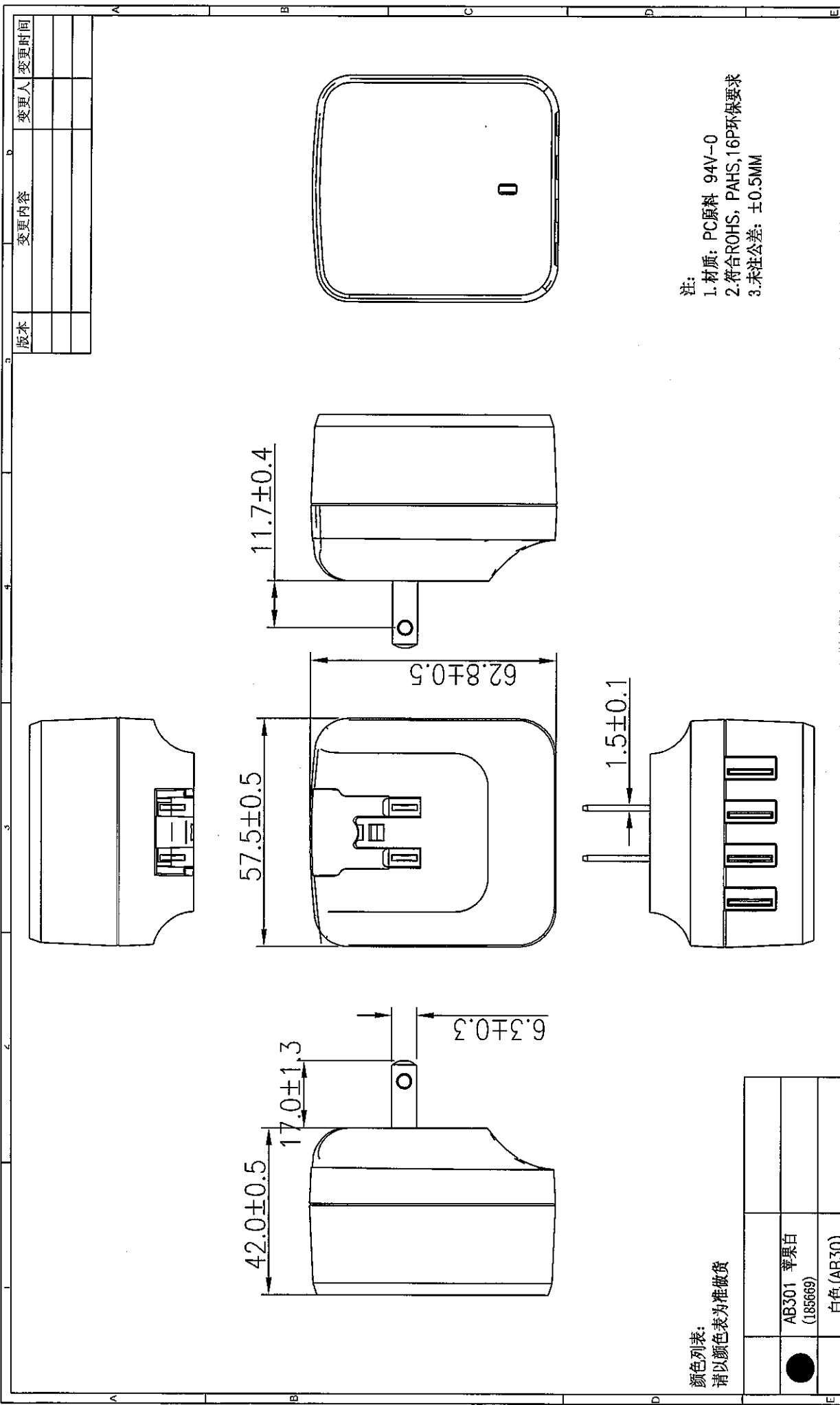


- 注:
1. 材质: PC原料 94V-0
  2. 符合ROHS, PAHS, 16P环保要求
  3. 需与主体实装配合格
  4. 未注公差: ±0.1MM
  5. 高光亮面

颜色列表:  
请以颜色表为准做货

●	ABS01 苹果白 (185669)	10-0161-SA02	
	黑色PC原料	10-0161-SA01	
选择	颜色	料号	

版本	变更内容	变更人	变更时间



颜色列表:  
请以颜色表为准做货

●	AB301 苹果白 (185669)	
	白色 (AB30)	
	黑色	00-034H-UL01
选择	颜色	金盈半成品料号

注:  
1. 材质: PC原料 94V-0  
2. 符合ROHS, PAHS, 16P环保要求  
3. 未注公差: ±0.5MM

版本	变更内容	变更人	变更时间