

Network Camera User Manual

Contents

1. Login Interface.....	1
2. Live view.....	3
2.1 Full-screen Preview.....	3
2.2 Electronic Zoom-in.....	3
2.3 PTZ control.....	4
2.4 Show smart detection rule.....	5
3. Playback.....	5
4. File Management.....	6
4.1 Search.....	6
4.2 Preview Capture.....	6
4.3 Playback Capture.....	6
4.4 Playback Backup.....	6
4.5 File Capture.....	7
4.6 Preview Videos.....	7
4.7 SD Card Link Capture.....	7
4.8 Backup Video Play.....	7
5. Setup.....	8
5.1 Device Info.....	8
5.2 QR Code.....	9
5.3 PTZ Settings.....	10
5.4 Time Settings.....	10
5.5 Audio Settings.....	11
5.6 Display Settings.....	12
5.7 Streams.....	13
5.8 ROI Setting.....	14
5.9 Video Parameters.....	14
5.10 Motion Detection.....	16
5.11 Video Tampering.....	17
5.12 Privacy Zones.....	18
5.13 Target Count.....	18
5.14 Object Left/Lost.....	20
5.15 Area Detection.....	21
5.16 Line Crossing.....	22
5.17 Video Plan.....	23
5.18 Network Settings.....	24
5.19 Http/Https.....	25
5.20 Management Platform.....	25
5.21 Multicast Config.....	26
5.22 DDNS Setting.....	26
5.23 UPnP Settings.....	27
5.24 Email Settings.....	28
5.25 Alarm Input.....	29
5.26 Alarm Output.....	30
5.27 Exception.....	30
5.28 User Management.....	31
5.29 System Update.....	32
5.30 Auto Reboot.....	32
5.31 Storage Management.....	33
5.32 Restore.....	33
5.33 Local Setting.....	34
5.34 Developer.....	35
6. Log.....	35
7. Alarm.....	36
8. Exit.....	36

Statement

The instruction is for guidance only. Detailed information is in accordance with the product.

The instruction may include some technical inaccuracies or typographical error though it is prepared with our every effort.

The product or procedures described in the instruction may be changed or updated at any time without advance notice.

Screenshots used in the instruction are from the other machine and are only for indications and explanations.

For any doubts or to request documents about latest procedures and complementary notes, please consult with the after-sales service department.

Precautions

The followings describe information about correct usage and risk prevention as well property loss prevention to be strictly followed.

Please use web cameras in an environment within allowable temperature (-10°C to +50°C) and humidity.

Check if the power supply works normally before operation.

Do not furiously strike on the product and be careful not to fall it over.

Do not install the product in a dusty or moist place, or a place with strong electromagnetic radiation.

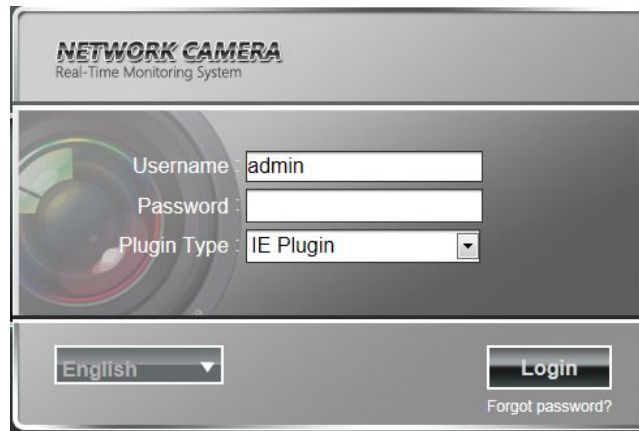
Do not place a container or others with liquid on the product or allow liquid flowing into inside the product.

When the product is left unused, please install the preventive dust cover for the image sensor.

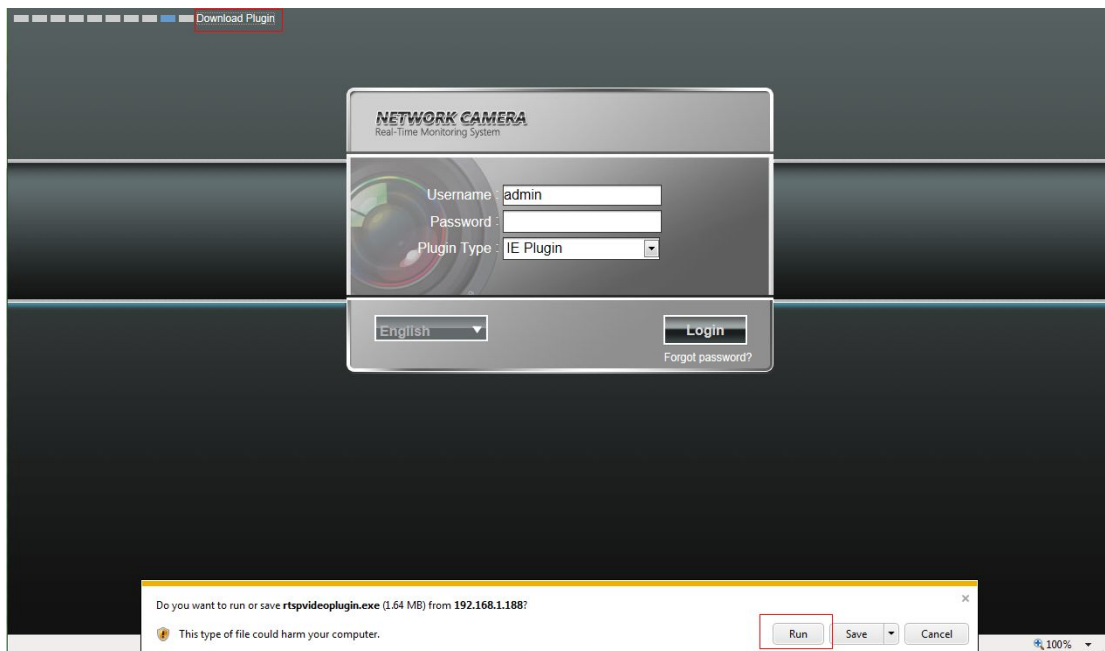
Do not disassemble the product without authorization.

1. Login Interface

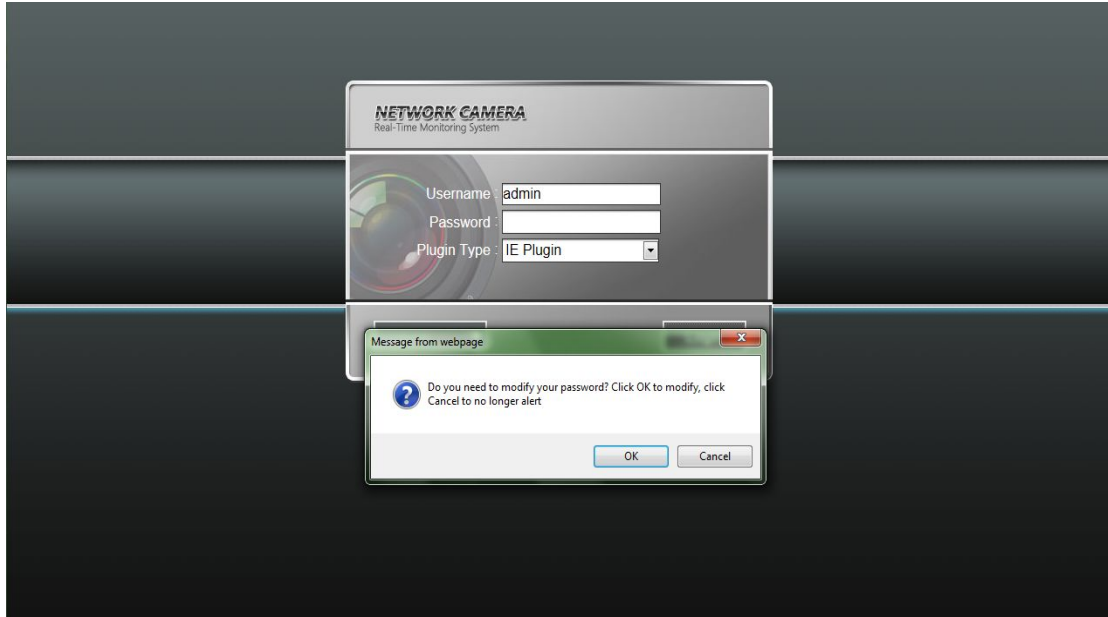
Input the IP address of the front-end device into the IE browser(default IP address is 192.168.1.188) to access the Login interface, as shown in the following figure:



While visiting the IP Camera for the first time, you must install the Active X. Click to download and install Active X, it will pop-up installation control message after clicking, Click "run", install the ActiveX according to the prompt, as shown in the following figure:



After installing the Active X, click "Login" will prompt whether to change the password, as shown in the following figure :



User Name: admin (default setting)

Password: blank (default setting) (Users can set the password according to the reminder)

Plugin Type: IE Plugin or Flash Plugin. If you use IE browser, then please select IE Plugin to login. While you use other browsers, then select Flash Plugin to login. (Note: Select Flash Plugin without installing Activex control)

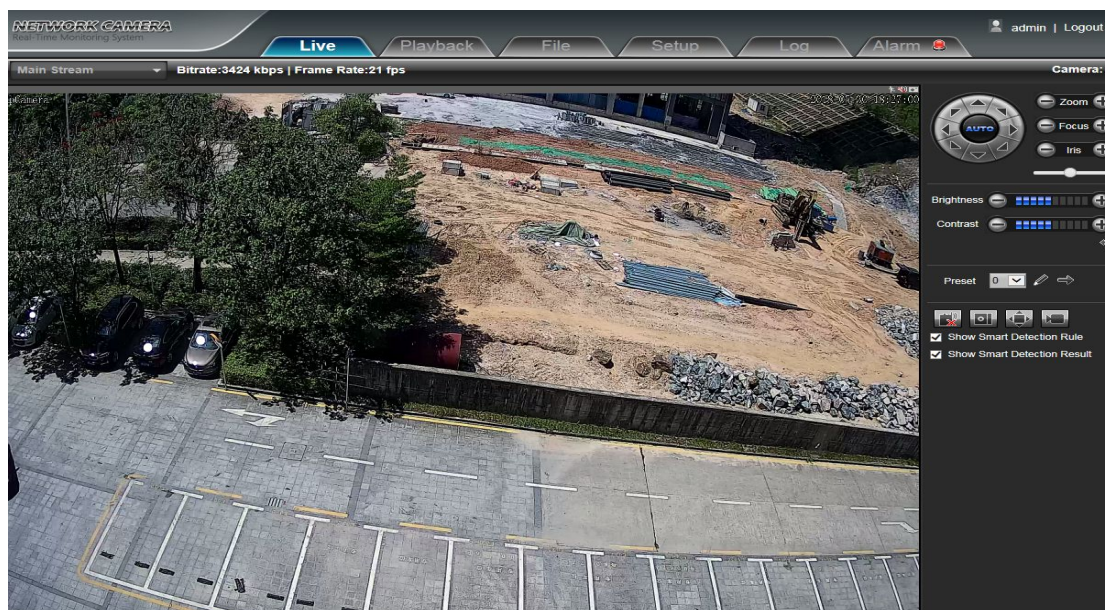
Select Language: English, implied Chinese, traditional Chinese

Note: if user sets password and then forgets, click on **Forgot password?** below the "login" , will pop-up password reset window (user name default admin) ,can return password to factory settings according to the prompt .


2. Live view

After login, it will enter into the live preview, as shown in the following figure.

Note:The device need to insert TF card for full function display interface, otherwise, it's for simple type interface.



2.1 Full-screen Preview

Click the full-screen icon  in the lower right corner to preview full screen. Or you can click right mouse button to enter and exit the full screen display in the preview interface

2.2 Electronic Zoom-in

It can zoom in the preview image by scrolling the mouse wheel, as shown in the following figure:



2.3 PTZ control



PTZ Control: You can use eight directional keys to rotate front-end devices, and AUTO indicates auto-rotation.

Zoom In/ Out: To adjust degree of zoom in/ out

Focus: To adjust size of focus


Iris: To adjust size of aperture

Speed: Use the slider to regulate the PTZ speed





Brightness: To adjust the brightness of the screen

Contrast: To adjust the contrast of the screen

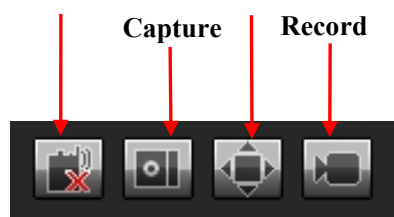
The  arrow is used to restore default settings



Set A Preset Point: Set a preset point by using directional keys on the PTZ control to rotate the camera to the desired location, next select a preset number from the Preset Point drop-down list, and then press  button.

Call A Preset Point: Call a preset point by selecting a preset number to be called from the Preset Point drop-down list and press  button.

VOICE INTERCOM Full Screen



Voice Intercom: Click it to enable or disable voice intercom

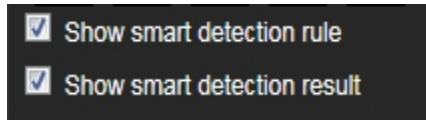
Capture: Capture for preview. Click the capture icon, it will pop up its storage path automatically

Full Screen: Display the current preview in full screen

Record: Enable or disable preview interface record

Note: X indicates the function is off or disabled



2.4 Show smart detection rule

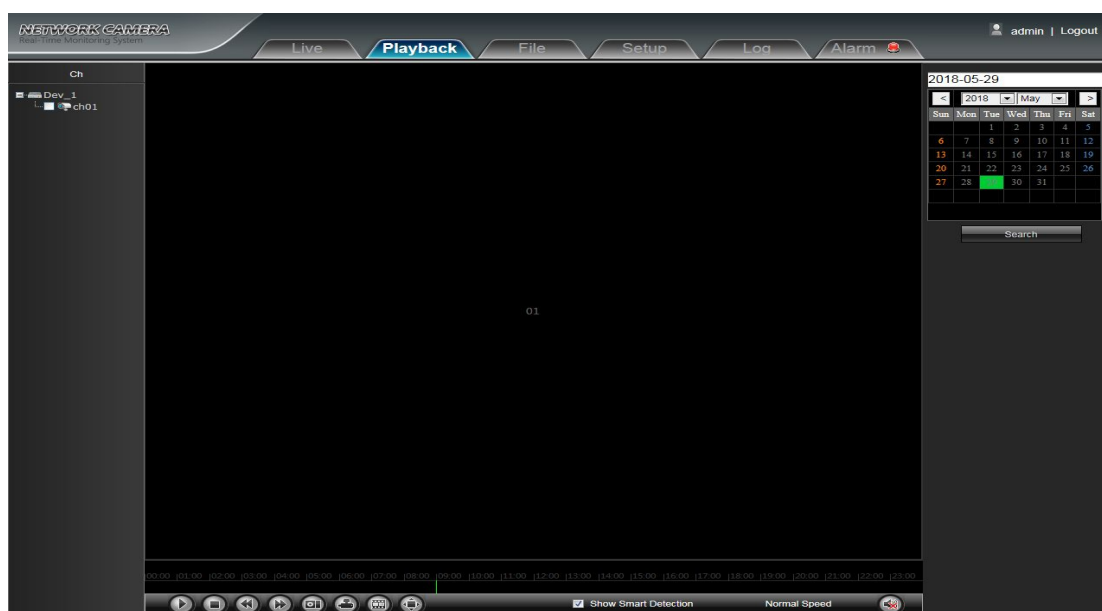











Show smart detection rule: choose whether to display intelligent detection types(total four types: Target Count, Object Detection, Area Detection, Virtual Guard).

Show smart detection result:choose whether to display intelligent detection statistical result.

3. Playback

Click Playback enter into playback interface, click the icon , next select the date time of the calling video in need, then click the icon , the record video will search automatically, as shown in the following figure:

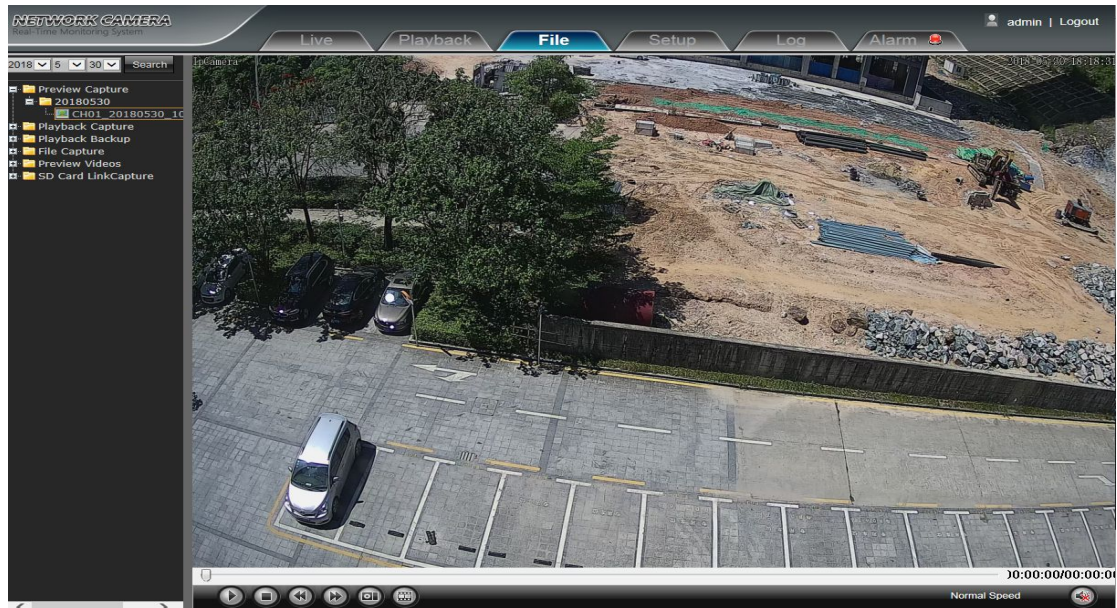


-  **Start:** Start the current playback
-  **Stop:** Stop the current playback
-  **Slow:** Slow down the playback speed(1/2, 1/4, 1/8, 1/16 times optional)
-  **Fast:** Speed up the playback speed(2, 4, 8, 16 times optional)
-  **Snapshot:** Can be snapshot in playback channel
-  **Backup:** Can be backup video in playback channel
-  **Frame Play:** Single frame to play
-  **Full Screen:** Playback video will display with full screen
- Show Smart Detection:** when the video is to intelligent detect video,it can display intelligent Detection rules and statistical result.
-  **Voice:** Adjust the volume of playback audio

Double-click the slider location, it will start to play the video, or you can click the Start button to playback video

4. File Management

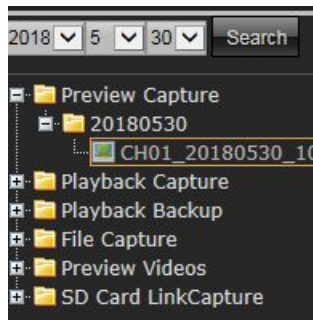
Note: The device needs to insert a TF card for a full function display interface, otherwise, it's for a simple type interface.



4.1 Search

Input the concrete time, and click the **Search** button, the lower part displays searched images and videos (double click to display files)

Note: It can modify video or image storage path, and later chapter will make a brief instruction (more details please refer to: [Setup](#) → [Local Setting](#))



4.2 Preview Capture

To review video record preview capture files, search and double click the image files directly.

4.3 Playback Capture

To review video record playback capture files, search and double click the image files directly.

4.4 Playback Backup

To review playback video files, search and double click the video files directly.

4.5 File Capture

To review capture files in file management, search and double click the image files directly.








4.6 Preview Videos

To review preview interface video record files, search and double click the video files directly.

4.7 SD Card Link Capture

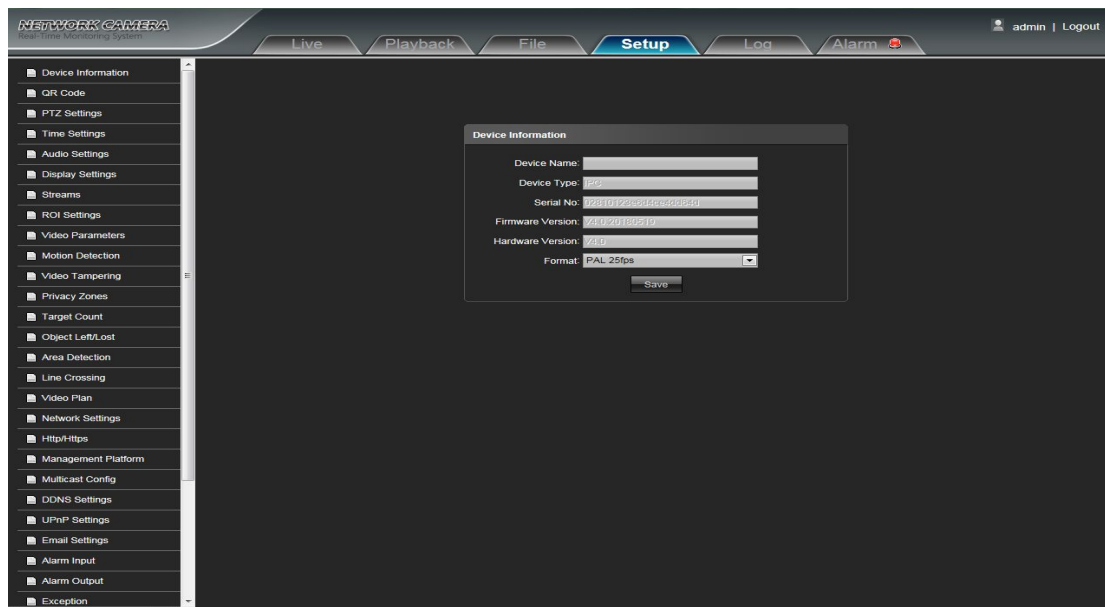
To review SD Card Link Capture files, search and double click the video files directly.

4.8 Backup Video Play

- **Start:** Click  button to play the backup video image file
- **Stop:** Click  button to stop the play
- **Slow:** Click  button to slow play the backup video image file
- **Fast:** Click  button to fast play the backup video image file
- **Frame:** Click  button to play the backup video image file by frame
- **Capture:** Click  button to snap the backup video image during display
- **Voice:** Click  button to select turn on/ off the voice during backup video image display

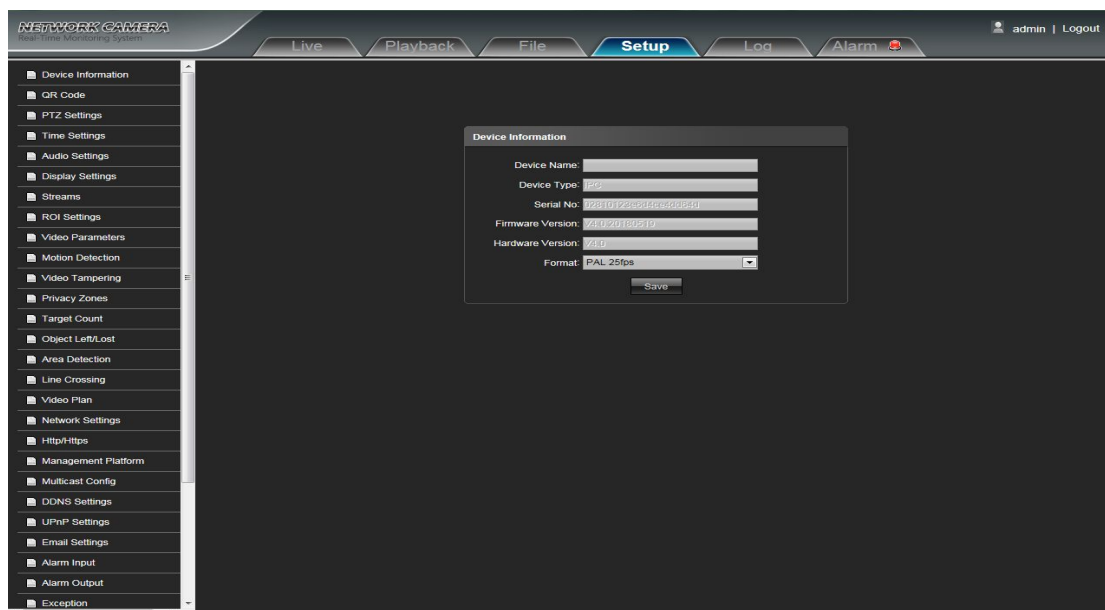
5. Setup

Note: The device needs to insert a TF card for a full function display interface; otherwise, it's for a simple type interface.



5.1 Device Info

IP Camera Device Info interface as shown in the following figure:



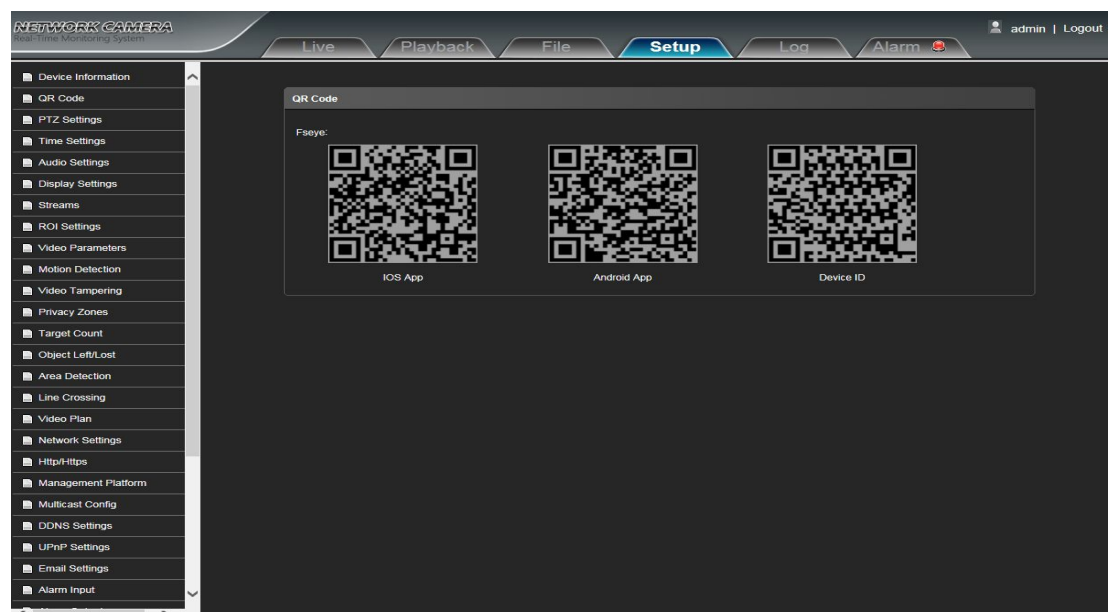
- **Device Name:** Edit the camera name
- **Device Type:** Display the device type
- **Serial No.:** Display the product serial No.
- **Firmware Version:** Display the software version date (Note: Based on the version information which displayed in factory product)
- **Hardware Version:** Display the hardware version number
- **Format:** Switch to select the PAL and NTSC image scanning system

After completing all parameter settings, click Save and then it will take effect immediately.

5.2 QR Code

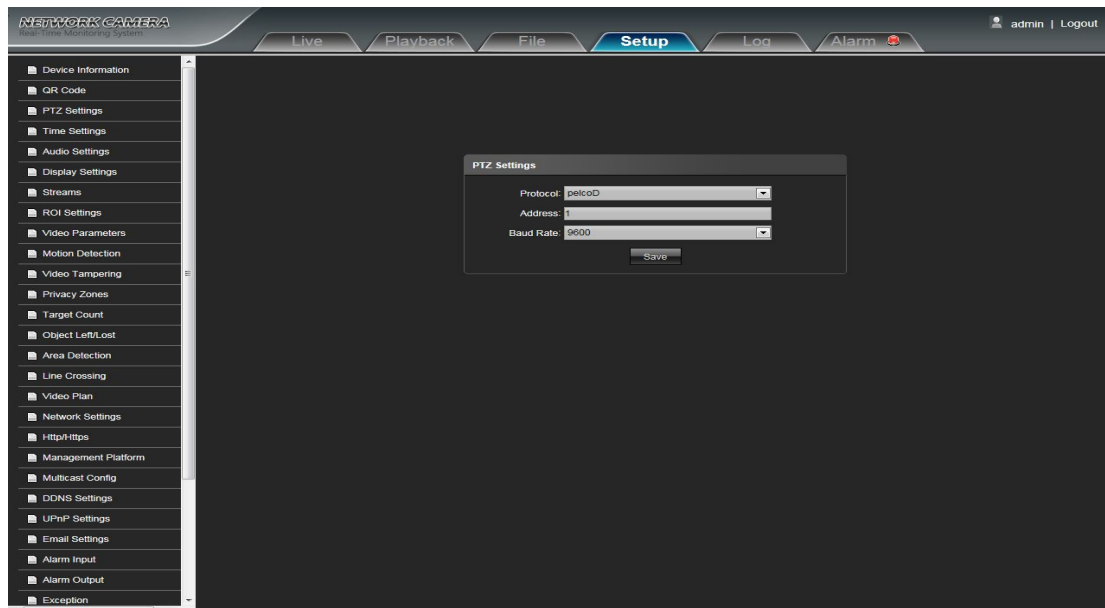
The display interface of QR code of IP Camera is shown as below, iphone users use the "RichScan" browser to scan IOS APP QR code to turn to Fseye downloading interface, Android mobile users use the "RichScan" of browser to scan the Android APP QR code to turn to Fseye downloading interface. Use Fseye mobile client can directly scan the Device ID QR code to login.

(Note: The Device ID QR icon will display only after the opening the corresponding agreement in platform management interface, and it supports QR code at present: Fseye, Fseye is corresponding to Fseye client in platform management interface)



5.3 PTZ Settings

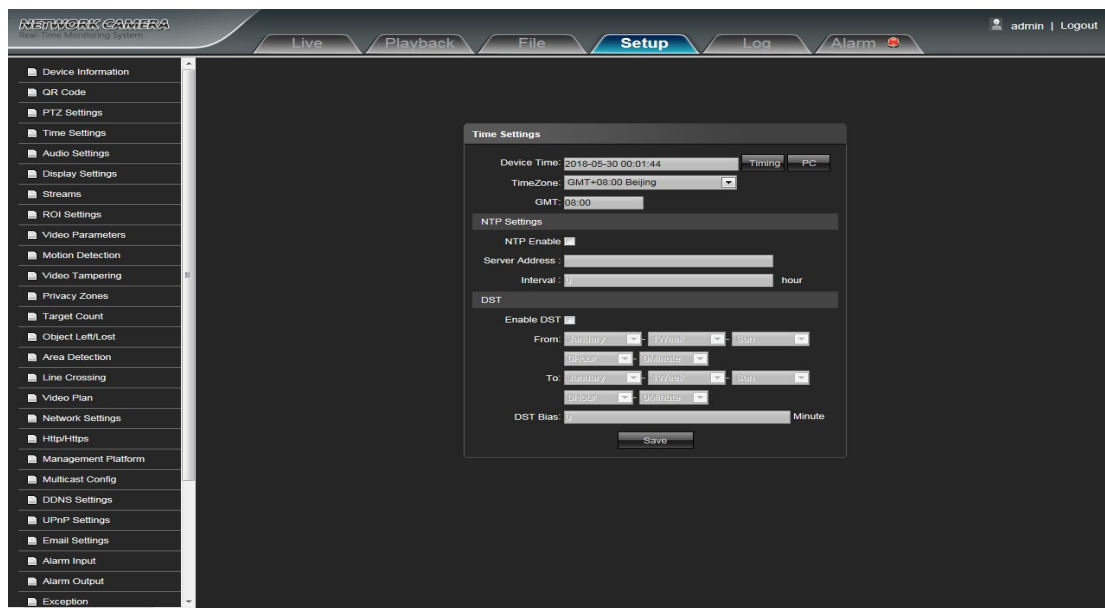
IP Camera PTZ Settings interface as shown in the following figure:



- **Protocol:** Support multiple protocols
 - **Address:** Support 0-255 address code adjustable
 - **Baud Rate:** Support diverse baud rate selectable
 - **Operation Method:** Connect analog high speed dome at the IP camera AB port, set the protocol and baud rate, and control the high speed dome through IPC preview interface
- After complete all parameters setting, click Save and then it will take effect immediately.

5.4 Time Settings

IP Camera Time Settings interface as shown in the following figure:

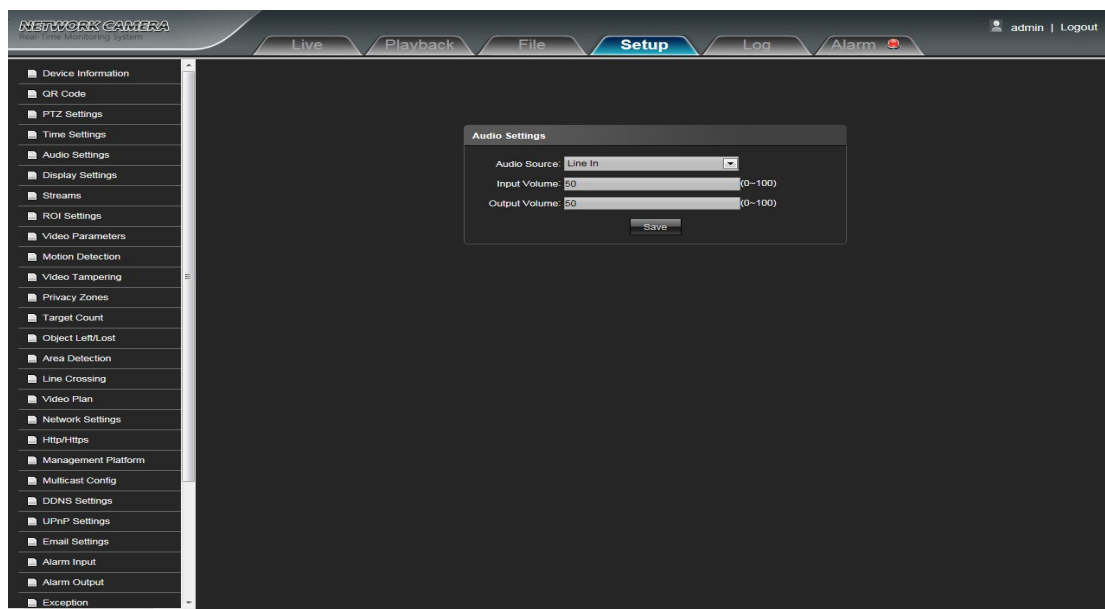


- **Device Time:** Set and display the device current time
- **Time Zoom:** Different area time format selectable
- **GMT:** Adjust the time more exact
- **NTP Enable:** Click to determine whether to use NTP
- **Server Address:** Input NTP server IP address
- **Interval:** Input the interval time
- **Enable DST:** Can choose to enable or close the DST function, If in the implementation of daylight saving time region, just click **Enable DST** the enable daylight saving time
- **From:** Set begin DST time
- **To:** Set end DST time
- **DST Bias:** Set DST offset time

After all parameters setting completed, click "Save" and then it comes into effect immediately.

5.5 Audio Settings

IP Camera Audio Settings interface as shown in the following figure:

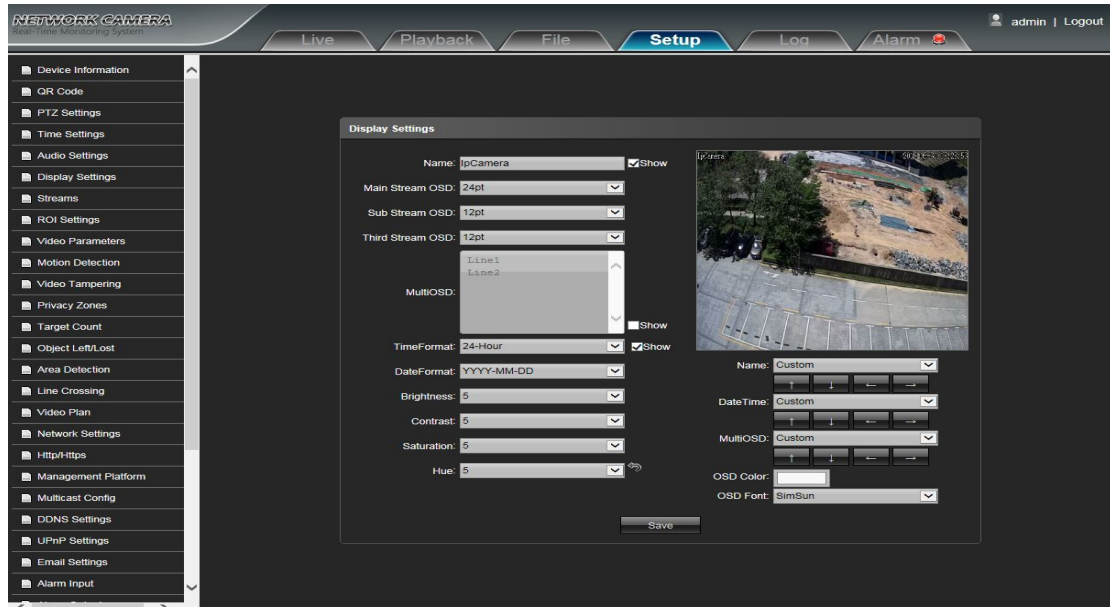


- **Audio Source:** Select the audio input mode, LineIn or MicIn selectable
- **Input Volume:** Set the size of the input volume, the range of volume:0-100, default is 50
- **Output Volume:** Set the size of the output volume, the range of volume:0-100, default is 50

After complete all parameters setting, click Save and then it will take effect immediately.

5.6 Display Settings

IP Camera Display Settings interface as shown in the following figure.

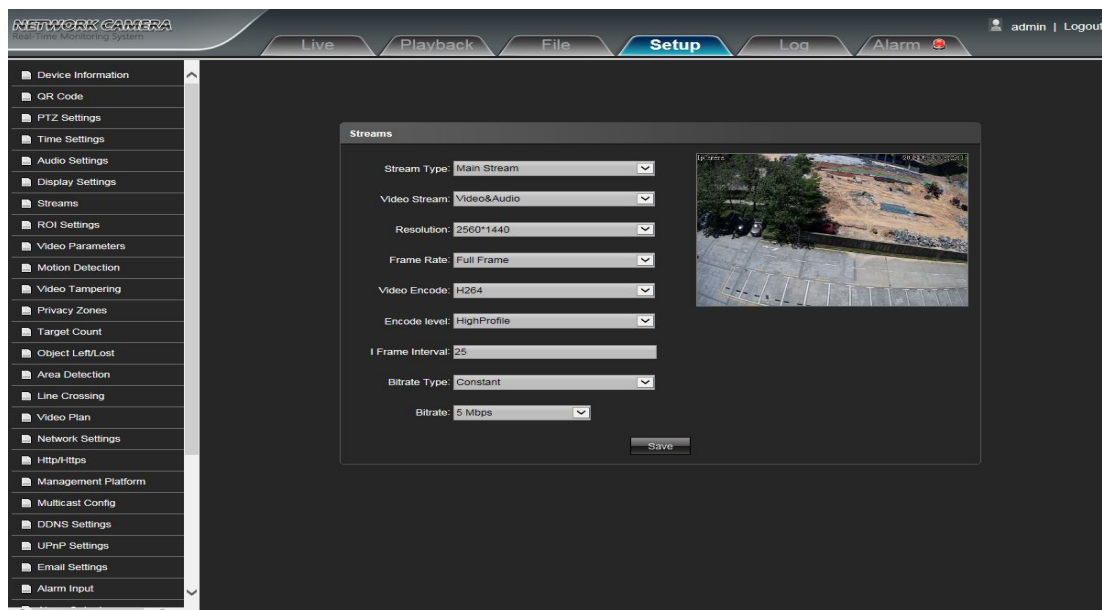


- **Name:** Modify the appointed channel name
- **Main Stream OSD:** Modify the appointed channel font of main stream OSD
- **Sub Stream OSD:** Modify the appointed channel font of sub stream OSD
- **Third Stream OSD:** Modify the appointed channel font of Third stream OSD
- **Multi OSD:** Add multi user-defined OSD, it can be selected Show or not
- **Time Format:** Select different time display mode for the appointed channel
- **Date Format:** Select different date display mode for the appointed channel
- **Brightness:** Adjust the brightness for the appointed channel
- **Contrast:** Adjust the contrast for the appointed channel
- **Saturation:** Adjust the saturation for the appointed channel
- **Hue:** Adjust the hue for the appointed channel
- **Cyclotron Arrow:** Restore the default parameters (Only for Bright, Contrast, Saturation and Hue)
- **Name:** Set the channel title location for the appointed channel
- **Date:** Set the channel date location for the appointed channel
- **Multi OSD:** Set the position of multi OSD
- **OSD Color:** Can set the color of the OSD font
- **OSD Font:** Optional OSD font

After complete all parameters setting, click Save and then it will take effect immediately

5.7 Streams

IP Camera Streams setting interface as shown in the following figure:

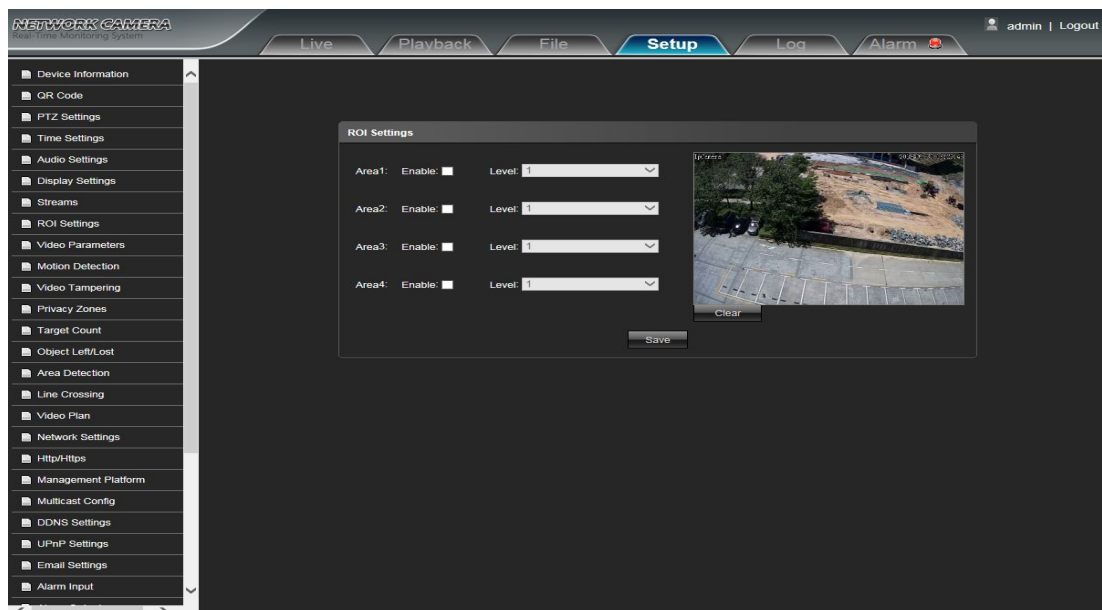


- **Stream Type:** Main Stream/ Sub Stream/Third Stream selectable
- **Video Stream:** Include complex stream/ video stream two types
- **Resolution:** The camera supports several resolution, will display here (Note: Based on the defaulted resolution of factory products)
- **Frame Rate:** Select different frame rate in the drop-down list, default is Full Frame
- **Video Encode:** H.264/ H.265/MJPEG three kinds of video encode format
- **Encode level:** There are MainProfile/ Baseline/ HighProfile three types optional
- **I frame Interval:** Set the I frame interval size
- **Bitrate Type:** Constant/ Variable selectable
- **Bitrate:** Set different bitrate for different channel (Note: Based on the defaulted resolution of factory products)

After complete all parameters setting, click Save and then it will take effect immediately

5.8 ROI Setting

IP Camera ROI setting interface as shown in the following figure:

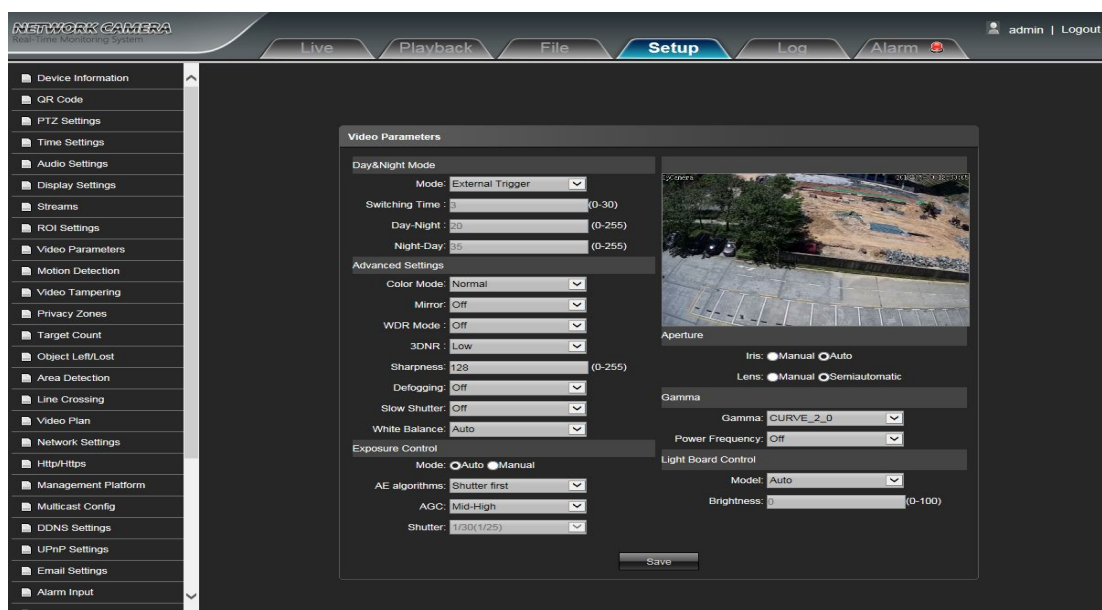


- **ROI Setting:** On the preview window, hold down the left mouse button and drag to set the ROI area. A total of four ROI areas can be set, click **Enable:** to set the corresponding ROI region coding level, the higher the level of coding, the stronger the ROI region encoding

After complete all parameters setting, click Save and then it will take effect immediately

5.9 Video Parameters

IP Camera Video Parameters interface as shown in the following figure:



- **Day&Night Mode:** Outside Trigger/ Auto/ Color/ Black White four kinds of mode selectable. Non infrared IP cameras default mode is Auto, and infrared IP cameras default mode is Outside Trigger. According to the IP camera

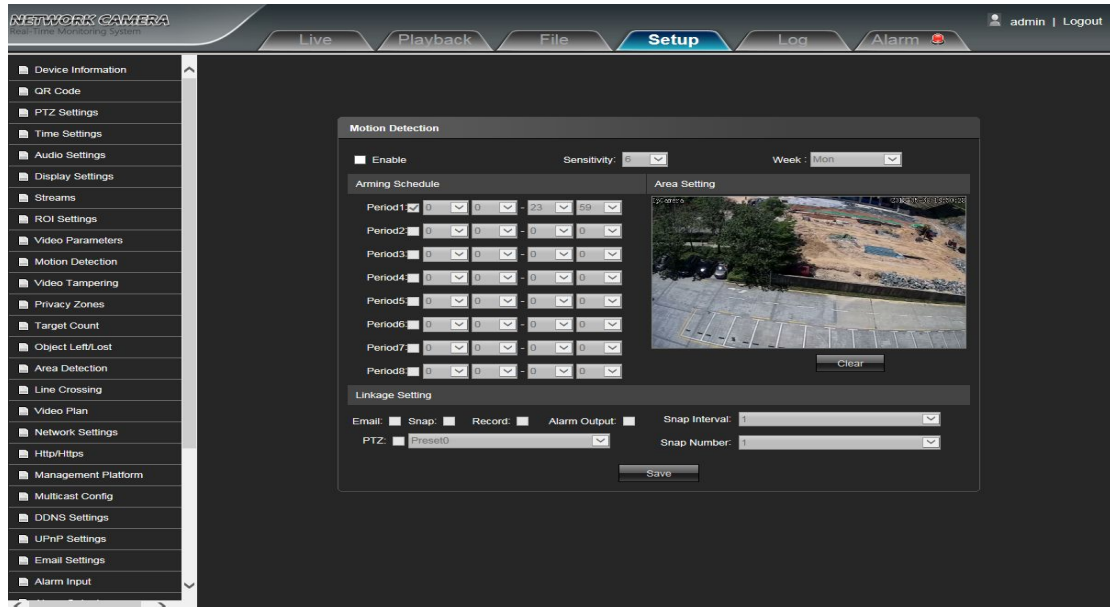
type and actual scene, user can select the Day&Night mode optional

- **Switching Time:** Day&Night switch delay time, 0-30s selectable, and default is 3s
- **Day-Night:** 0-255 selectable, users can adjust it according to the need, default is 20
- **Night-Day:** 0-255 selectable, users can adjust it according to the need, default is 35
- **Color Mode:** Normal/ Bright/ Nature three options, default is Normal
- **Mirror:** Off Horizontal Mirror/ Vertical Mirror/ 180° Rotation/90° Rotation/270° Rotation seven options, default is Off
- **WDR Mode:** Off/ BLC/ WDR three options, default is Off
- **3DNR:** Off/ Low/ Mid/ Mid-High/ High five levels, default is Low
- **Sharpness:** 0-255 selectable, default is 128
- **Defogging:** Off/ Low/ Mid/ High four options, default is off
- **Slow Shutter:** Off/On selectable, default is Off
- **White Balance:** According to the environment color temperature, users can set the white balance, Auto option for normal light environment, adjust the white balance mode by drop down list selection
- **Exposure Control Mode:** Auto/ Manual selectable, default is Auto
- **AE algorithms:** Shutter first/ Gain first selectable, default is Shutter first
- **AGC:** It can be set when it's automatic exposure, Low/ Mid-Low/ Mid/ Mid-High/ High selectable, default is Mid-High. The higher Auto Gain value, the better sensitivity within low illumination, while the noise will be more obvious
- **Shutter:** It can be set when it's manual exposure, the shutter value range: 1/30 (25) -1/10000
- **Aperture:** According to the IPC lens type, the aperture can be divided into manual aperture and auto aperture(**note: based on the defaulted aperture of factory products**), the lens can be divided into manual focus and semiautomatic focus(**note: there is this option when it's equipped with electric lens**)
- **Gamma:** CURVE_1_6, CURVE_1_8, CURVE_2_0, CURVE_2_2 totally four modes, default is CURVE_2_0
- **Power Frequency:** off, 50hz, 60hz three types, the default is off
- **Light board control mode:** 3 types of led board control mode: off, manual, auto. defaulted to auto. (**Note: No dimmable models do not have this function**)
 - Off mode:** The led board can not be control, and it always Off.
 - Manual mode:** The led board brightness can be adjusted by manually change the parameters, and the range is 1-100, the higher the parameter value, the brighter the IR led.
 - Auto mode:** The image of the camera can be optimum, and it's power can be the minimum by acquiring the current image brightness&exposure & gain, and dynamically adjusting the light brightness.
- **Brightness:** The led board brightness can be set when the led board control is under Manual mode, and the range is 1-100

After complete all parameters setting, click Save, the settings will take effect immediately

5.10 Motion Detection

IP Camera Motion Detection setting interface as shown in the following figure:

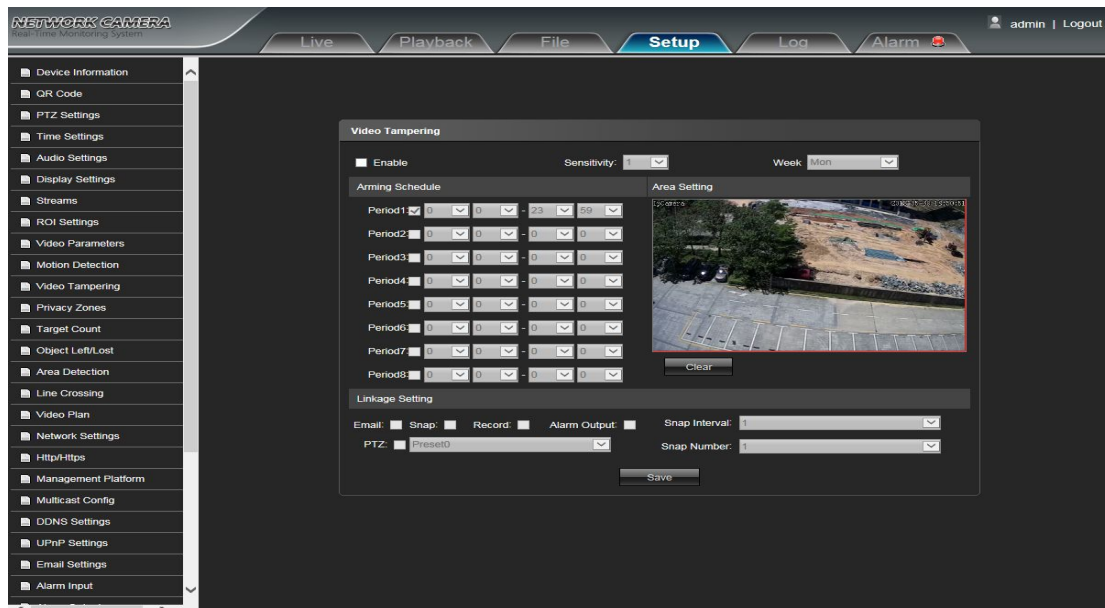


- **Enable:** Select whether to enable the Motion Detection function
- **Sensitivity:** The higher sensitivity, the more obvious motion detectable effect
- **Week:** The protection time can be set up from Monday to Sunday
- **Arm Schedule:** Can set up protection period of time, one day can set up 8 time quantum
- **Area Setting:** In the "Area Setting" preview interface, press and drag the left mouse button, then set the area needed to be detected
- **Clear:** Click Clear to clear the current detectable areas
- **Email:** Click Email. Once alarm triggers that it will send Email to appointed mailbox
- **Snap:** Click Snap. Once alarm triggers that it will linkage camera to snapshot picture and store it in the TF card
- **Record:** Click Record. Once alarm triggers that it will linkage camera to record video and restore it in the TF card
- **Alarm Output:** There is a active warner connected to the alarm output port. Once alarm triggers that it will linkage embedded relay switch to make alarm output
- **PTZ:** Enable or disable PTZ function
- **Preset:** When motion detection triggers alarm, it will linkage the presets
- **Snap Interval:** Set the alarm interval time
- **Snap Number:** Set the snapshot image count for every time

After complete all parameters setting, click Save, the settings will take effect immediately

5.11 Video Tampering

IP Camera Video Tampering setting interface as shown in the following figure:

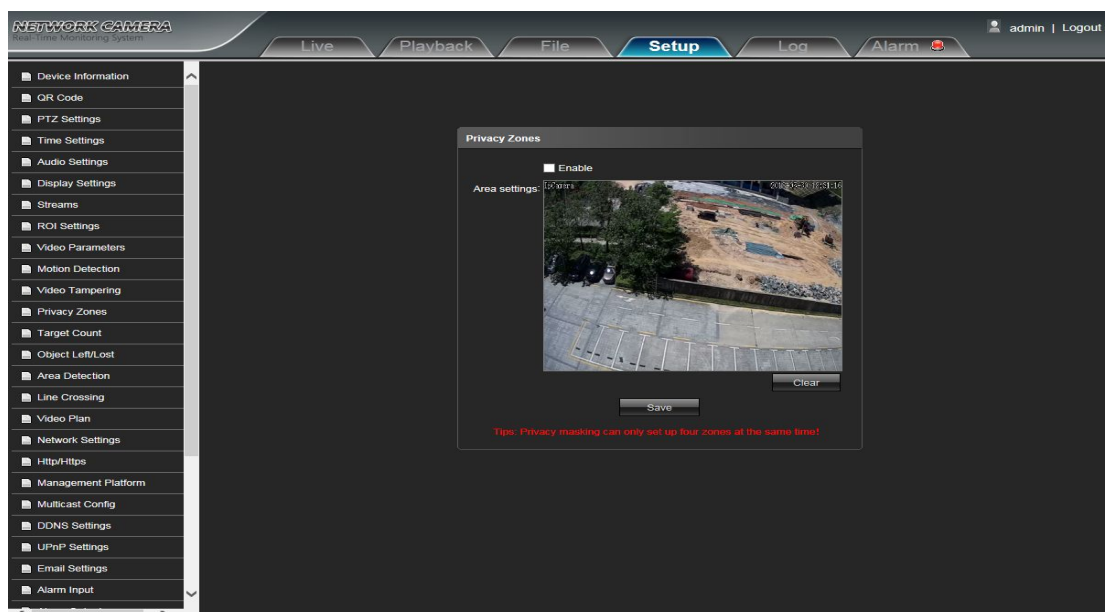


- **Enable:** Select whether to enable the video tampering function
- **Sensitivity:** The higher the sensitivity, the more easier to trigger the video tampering alarm
- **Week:** The protection time can be set up from Monday to Sunday
- **Arm Schedule:** Can set up protection period of time, one day can set up 8 time quantum
- **Area Setting:** In the "Area Setting" preview interface, press and drag the left mouse button, then set the area needed keeping out alarm
- **Clear:** Click Clear to clear the current detective areas
- **Email:** Click Email. Once alarm triggers that it will send Email to appointed mailbox
- **Snap:** Click Snap. Once alarm triggers that it will linkage camera to snapshot picture and store it in the TF card
- **Record:** Click Record. Once alarm triggers that it will linkage camera to record video and restore it in the TF card
- **Alarm Output:** There is a active warner connected to the alarm output port. Once alarm triggers that it will linkage embedded relay switch to make alarm output
- **PTZ:** Enable or disable PTZ function
- **Preset:** When Video Tampering triggers alarm, it will linkage the presets
- **Snap Interval:** Set the alarm interval time
- **Snap Number:** Set the snapshot image count for every time

After complete all parameters setting, click Save, the settings will take effect immediately

5.12 Privacy Zones

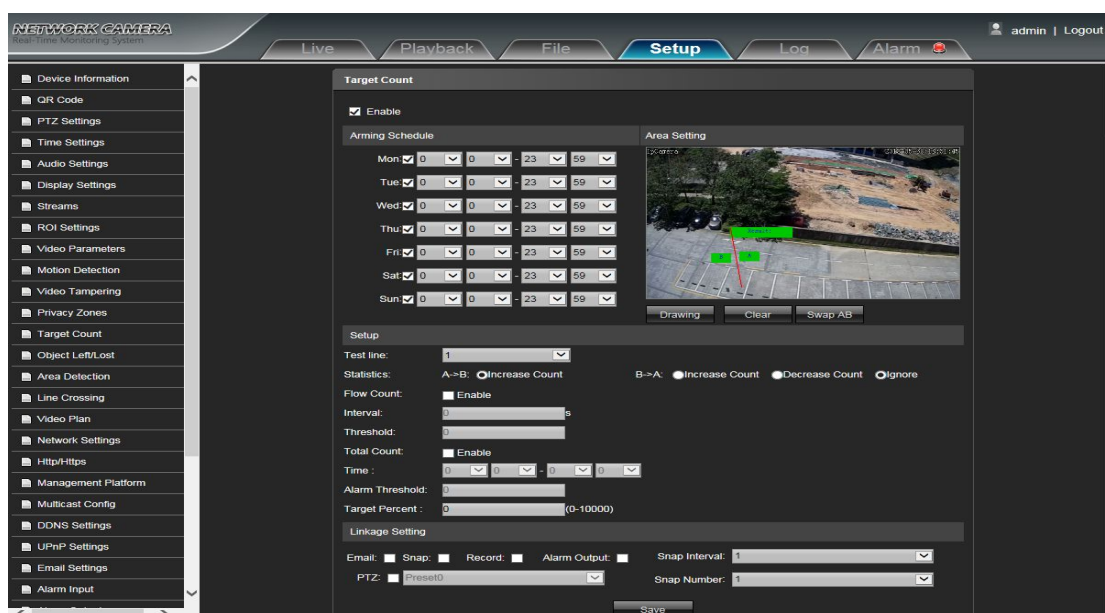
IP Camera Privacy Zones setting interface as shown in the following figure:



- **Enable:** Enable or disable the Privacy Mask function
 - **Area Settings:** Press and drag the left mouse button in the Area Settings preview interface, then draw the check optional to set the mask area
 - **Clear:** Click Clear to delete the current mask area
- After complete all parameters setting, click Save and then the settings will take effect immediately

5.13 Target Count

IP Camera Target Count setting interface as shown in the follow figure:



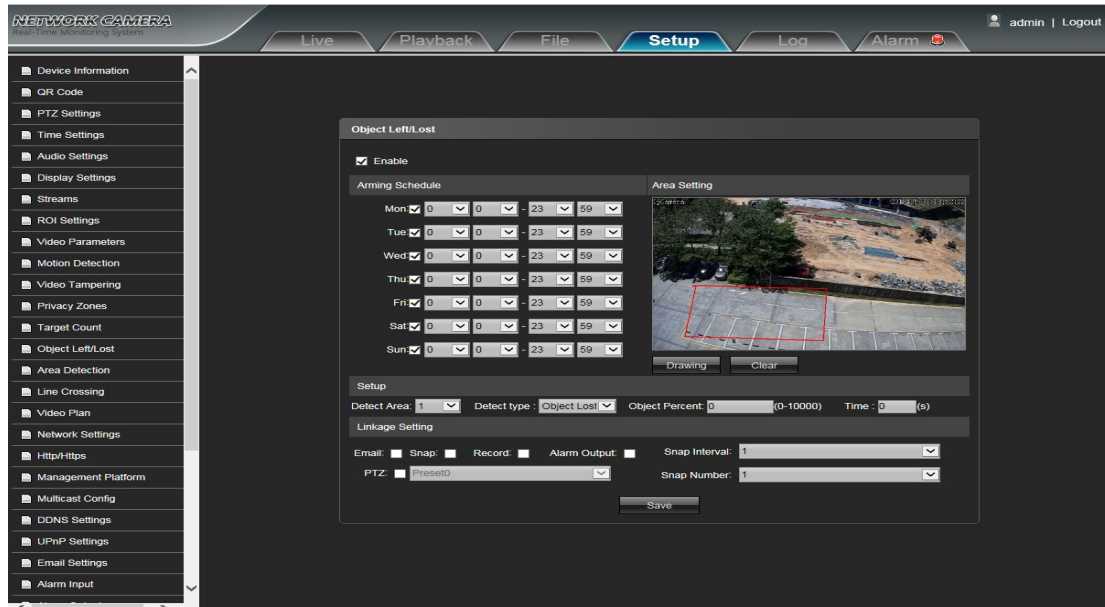
- **Enable:** Enable or disable the target counting function
- **Arming Schedule:** Arm schedule can be set from Monday to Sunday

- **Area Setting:** Press and drag the left mouse button to set the test line in the Area Settings preview interface, then click the right button to complete the setting, and the targets passing through the line will be counted
- **Clear:** Click Clear to delete all the test lines
- **Swap AB:** Click "swap AB" to exchange position between A and B
- **Test Line:** To add new test lines (support max. 4 test lines), or set the parameter setting for the corresponding test line optional
- **Statistics:** Set the test lines for targets passing through, there are A→B and B→A two statistical methods.
- **Flow Counter:** Enable or disable the Flow Counter function
- **Interval:** Set the counting time interval, when it is more than the time interval, the flow counter will reset and enter into next counting period automatically
- **Threshold:** Set the upper limit value for counting, when it is more than the setting value, it will trigger alarm function automatically
- **Total Counter:** Enable or disable the Total Counter function
- **Time:** Set the effective time period for the day's total counter
- **Alarm Threshold:** Set the upper limit value for the day's total flow, when it is more than the setting value, it will trigger alarm function automatically
- **Target Percent:** Set the min. area percent for the effective counting targets, once the area of targets passing through the test line are smaller than the setting value, it will be invalid without be counted
- **Email:** Click Email. Once alarm triggers that it will send Email to appointed mailbox
- **Snap:** Click Snap. Once alarm triggers that it will linkage camera to snapshot picture and store it in the TF card
- **Record:** Click Record. Once alarm triggers that it will linkage camera to record video and store it in the TF card.
- **Alarm Output:** There is a active warner connected to the alarm output port. Once alarm triggers that it will linkage embedded relay switch to make alarm output
- **PTZ:** Enable or disable PTZ function
- **Preset:** When target counting triggers alarm, it will linkage the presets
- **Snap Interval:** Set the snapshot interval time
- **Snap Number:** Set the snapshot image count for every time

After complete all parameters setting, click Save and then the settings will take effect immediately.

5.14 Object Left/Lost

IP Camera Object Left/Lost setting interface as shown in the follow figure:

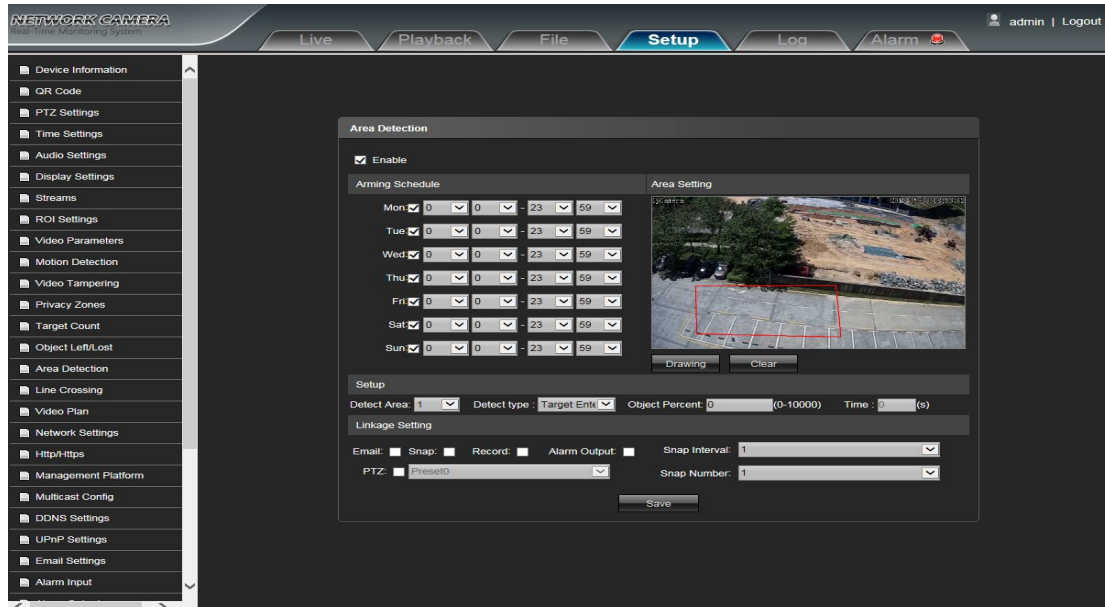


- **Enable:** Enable or disable the object detection function
- **Arming Schedule:** Can be set the arm schedule from Monday to Sunday
- **Area Setting:** Press and drag the left mouse button to set the detect zone in the Area Settings preview interface, then click the right key to complete the setting, and the objects of this area will be monitored and detected
- **Clear:** Click Clear to delete all the detect zones.
- **Detect Area:** To add new detect zone (support max. 4 detect zones), can be set the parameter setting for the corresponding detect zone optional
- **Detect Type:** Set the object detection type, there are three detection types, both of them will trigger alarm. Item lost refers to once the object lost in the detect zone, the camera will trigger alarm, Item left refers to once the new added object detected in the detect zone, the camera will trigger alarm. Item lost or left refers to both of object lost and adding, the camera will trigger alarm.
- **Object Percent:** Set the min. area percent for the object, the area of object is smaller than the setting value, it will be invalid
- **Time:** Set the upper limit value for the item lost and item left, when it is more than the setting value, it will trigger alarm function automatically
- **Email:** Click Email. Once alarm triggers that it will send Email to appointed mailbox
- **Snap:** Click Snap. Once alarm triggers that it will linkage camera to snapshot picture and store it in the TF card
- **Record:** Click Record. Once alarm triggers that it will linkage camera to record video and store it in the TF card.
- **Alarm Output:** There is a active warner connected to the alarm output port. Once alarm triggers that it will linkage embedded relay switch to make alarm output
- **PTZ:** Enable or disable PTZ function
- **Preset:** When object detection triggers alarm, it will linkage the presets
- **Snap Interval:** Set the snapshot interval time
- **Snap Number:** Set the snapshot image count for every time

After complete all parameters setting, click Save and then the settings will take effect immediately.

5.15 Area Detection

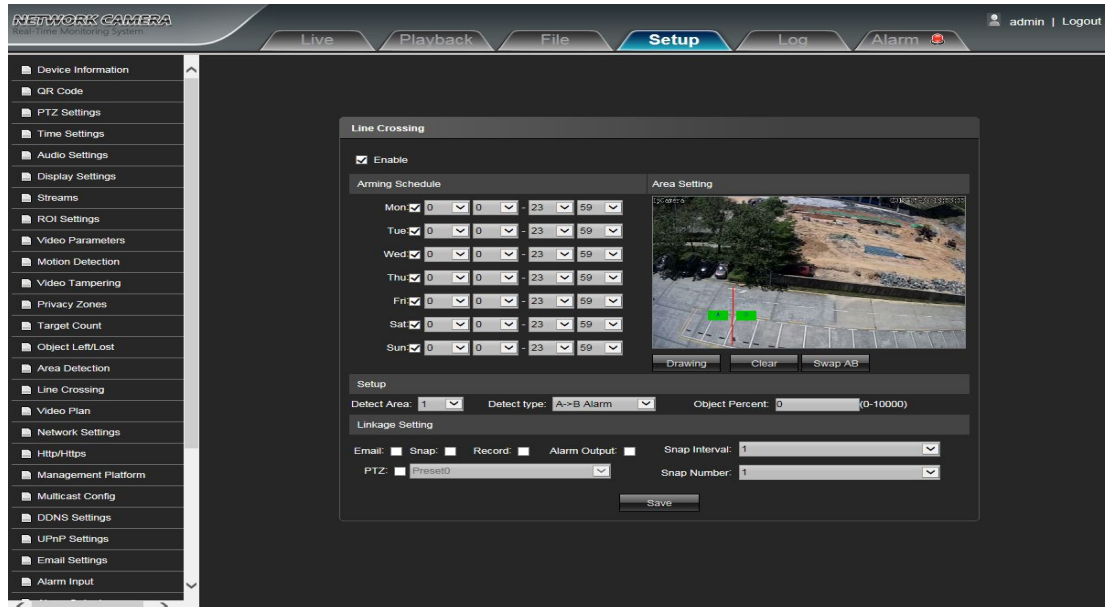
IP Camera Area Detection setting interface as shown in the follow figure:



- **Enable:** Enable or disable the area detection function
 - **Arming Schedule:** Can be set the arm schedule from Monday to Sunday
 - **Area Setting:** Press and drag the left mouse button to set the detect zone in the area settings preview interface, then click the right key to complete the setting, and the objects of this area will be monitored and detected
 - **Clear:** Click Clear to delete all the detect zones.
 - **Detect Area:** To add new detect zone (support max 4 detect zones), can be set the parameter setting for the corresponding detect zone optional
 - **Detect Type:** Set the target detect type, there are four detect types, all of them will trigger alarm. Target enter refers to once the target enter into the detect zone, the camera will trigger alarm, Target leave refers to the target go out the detect zone, the camera will trigger alarm, Target enter or leave refers to both of them happen, the camera will trigger alarm. When the staying time of target wander target entering into detection area exceeds the upper limit of setting time, it will trigger the alarm
 - **Object Percent:** Set the min. area percent for the object, the area of object is smaller than the setting value, it will be invalid
 - **Time:** When the staying time of the set target entering into detection area exceeds the upper limit of setting time, it will trigger the alarm
 - **Email:** Click Email. Once alarm triggers that it will send email to appointed mailbox
 - **Snap:** Click Snap. Once alarm triggers that it will linkage camera to snapshot picture and store it in the TF card
 - **Record:** Click Record. Once alarm triggers that it will linkage camera to record video and store it in the TF card.
 - **Alarm Output:** There is a active warner connected to the alarm output port. Once alarm triggers that it will linkage embedded relay switch to make alarm output
 - **PTZ:** Enable or disable PTZ function
 - **Preset:** When area detection triggers alarm, it will linkage the presets
 - **Snap Interval:** Set the snapshot interval time
 - **Snap Number:** Set the snapshot image count for every time
- After complete all parameters setting, click Save and then the settings will take effect immediately.

5.16 Line Crossing

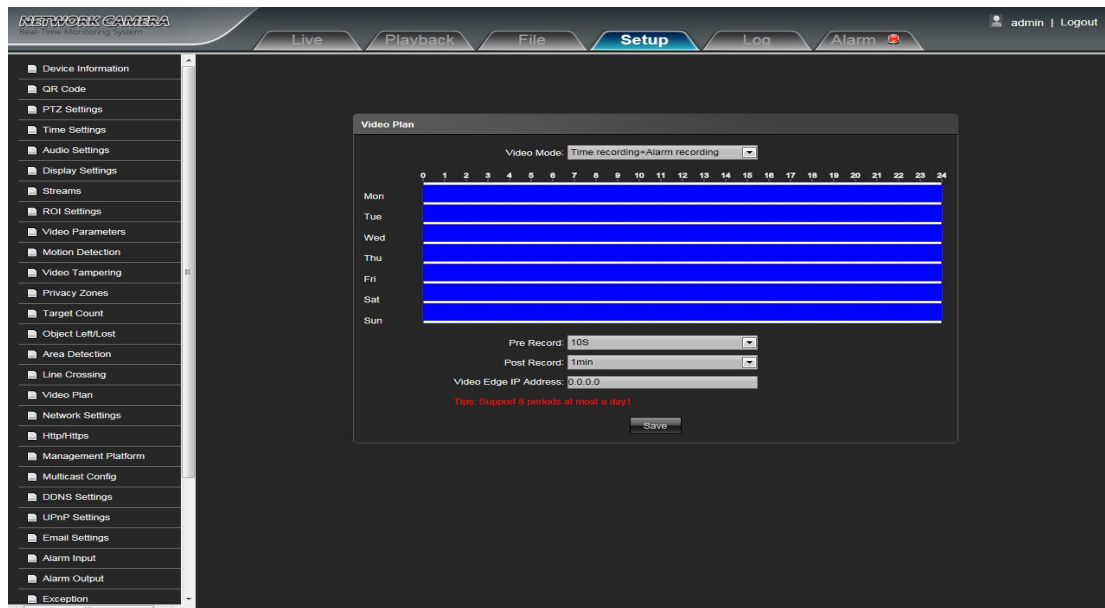
IP Camera Line Crossing setting interface as shown in the follow figure:



- **Enable:** Enable or disable the virtual guard function
 - **Arming Schedule:** Can be set the arm schedule from Monday to Sunday
 - **Area Setting:** Press and drag the left mouse button to set the guard line in the Area Settings preview interface, then click the right key to complete the setting, and the target passing through the guard line will trigger alarm
 - **Clear:** Click Clear to delete all the detect zones.
 - **Swap AB:** Click "swap AB" to exchange position between A and B
 - **Detect Area:** To add new guard line (support max. 4 guard lines), can be set the parameter setting for the corresponding guard lines optional
 - **Detect Type:** Set the guard lines to trigger alarm. A→B refers to the targets pass through the guard line from A area to B area and trigger alarm. A←→B refers to the targets pass through the guard line from A area to B area or from B area to A area, both of them will trigger alarm.
 - **Object Percent:** Set the min. area percent for the object, the area of target passing through the guard line is smaller than the setting value, it will be invalid without triggering alarm
 - **Email:** Click Email. Once alarm triggers that it will send Email to appointed mailbox
 - **Snap:** Click Snap. Once alarm triggers that it will linkage camera to snapshot picture and store it in the TF card
 - **Record:** Click Record. Once alarm triggers that it will linkage camera to record video and store it in the TF card.
 - **Alarm Output:** There is a active warner connected to the alarm output port. Once alarm triggers that it will linkage embedded relay switch to make alarm output
 - **PTZ:** Enable or disable PTZ function
 - **Preset:** When virtual guard triggers alarm, it will linkage the presets
 - **Snap Interval:** Set the snapshot interval time
 - **Snap Number:** Set the snapshot image count for every time
- After complete all parameters setting, click Save and then the settings will take effect immediately.

5.17 Video Plan

IP Camera Video plan setting interface as shown in the following figure:

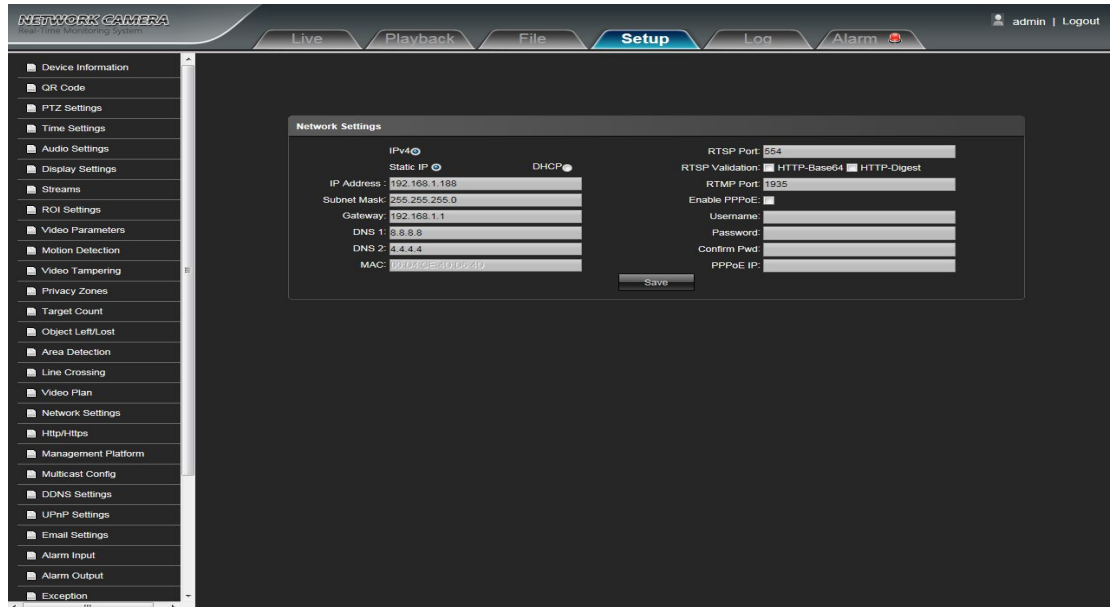


- **Video Mode:** Select the video mode, there are Time recording + Alarm recording, Time recording , Alarm recording, No video four modes optional
- **Week:** You can set the recording time from Monday to Sunday
- **Pre Record:** Pre-recording time can be set
- **Post Record:** You can set the recording delay time
- **Video Edge IP Address:** enter the IP of NVR or server

After complete all parameters setting, click Save and then the settings will take effect immediately

5.18 Network Settings

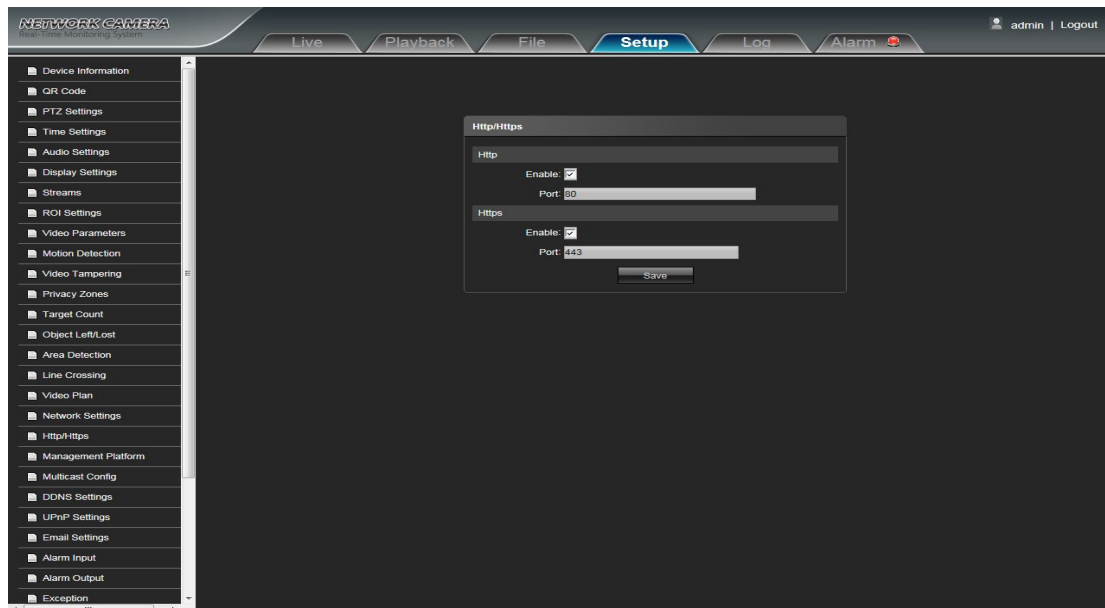
IP Camera Network Settings interface as shown in the following figure:



- **IPV4:** IP protocol version No. is 4
 - **Static IP:** The device IP address is permanent
 - **DHCP:** Enable DHCP, then IP camera will get the IP address from router automatically
 - **IP Address:** Input the corresponding numbers to change the IP address
 - **Subnet Mask:** Input the corresponding IP subnet mask
 - **Gateway:** Input the corresponding gateway address
 - **DNS 1:** DNS server IP address
 - **DNS 2:** DNS server second IP address
 - **RTSP Port:** Use domain name to access and login device need mapping RTSP, default port is 554
 - **RTSP Validation:** Choose RTSP verification mode, Http-Base64, Http-Digest selectable. After clicking to check and enable the corresponding RTSP verification mode, When playing RTSP real-time stream, it needs to verify the user name and password
 - **RTMP Port:** Use domain name to access and login device need mapping RTMP, default port is 1935
 - **Enable PPPoE:** Click to enable PPPoE
 - User Name:** Input the user name
 - Password:** Input the password
 - Confirm pwd:** Input the password again to confirm it
 - PPPoE IP:** Input device dynamic address
- After complete all parameters setting, click Save, then the settings will take effect immediately

5.19 Http/Https

IP Camera Http/Https interface as shown in the following figure:

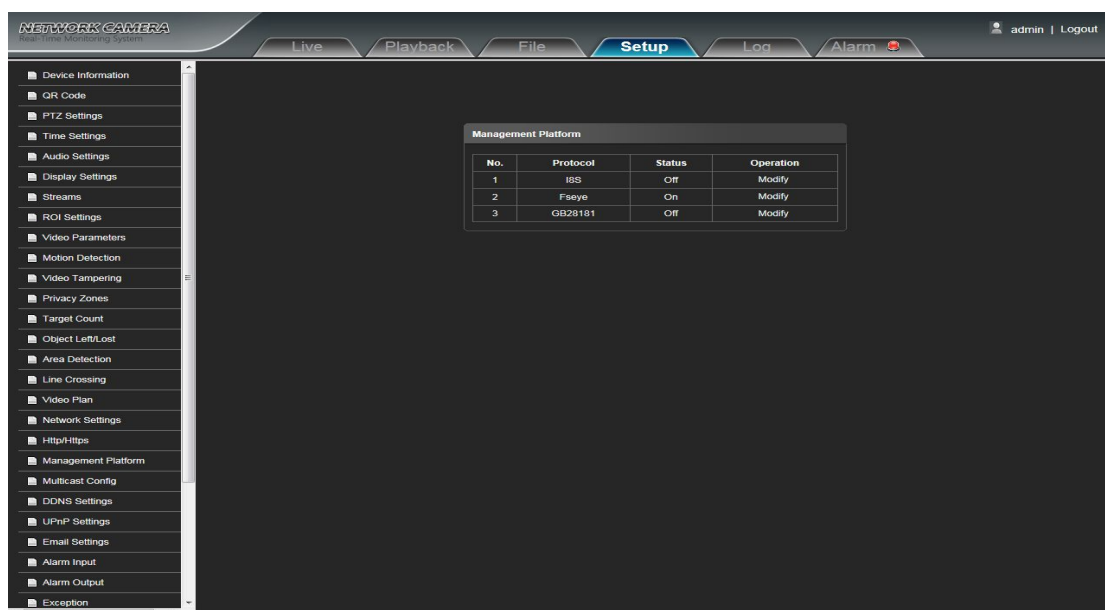


- **Enable:** Select whether to enable the http/https
- **HTTP Port:** Input the corresponding port (Default is 80)
- **HTTPS Port:** Input the corresponding port (Default is 443)

After complete all parameters setting, click Save, then the settings will take effect immediately

5.20 Management Platform

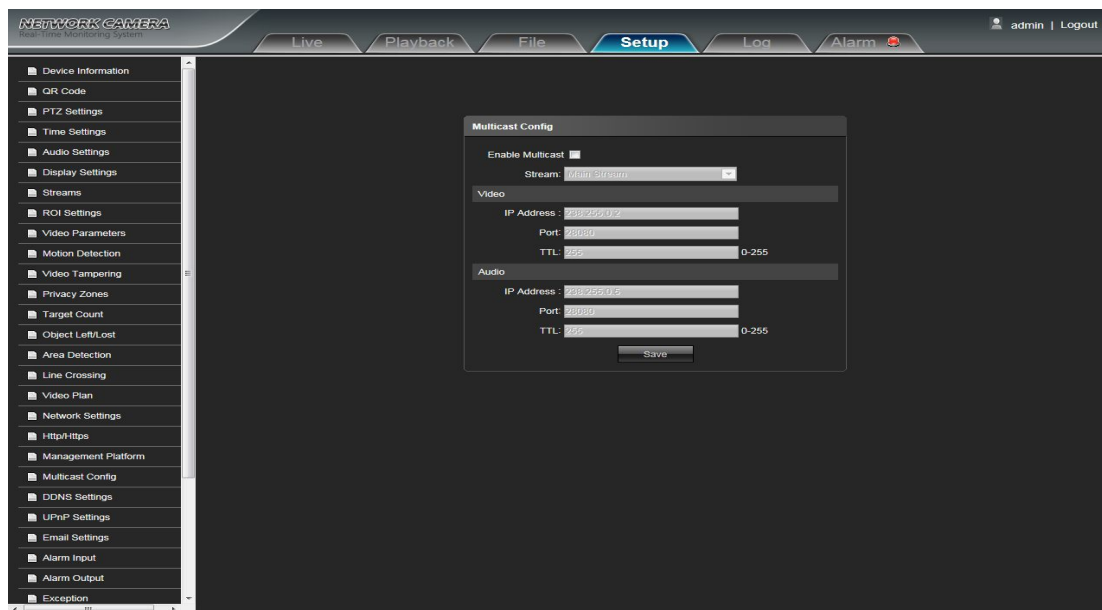
IP Camera Management Platform interface as shown in the following figure:



User can open,close the protocol, and modify the protocol information

5.21 Multicast Config

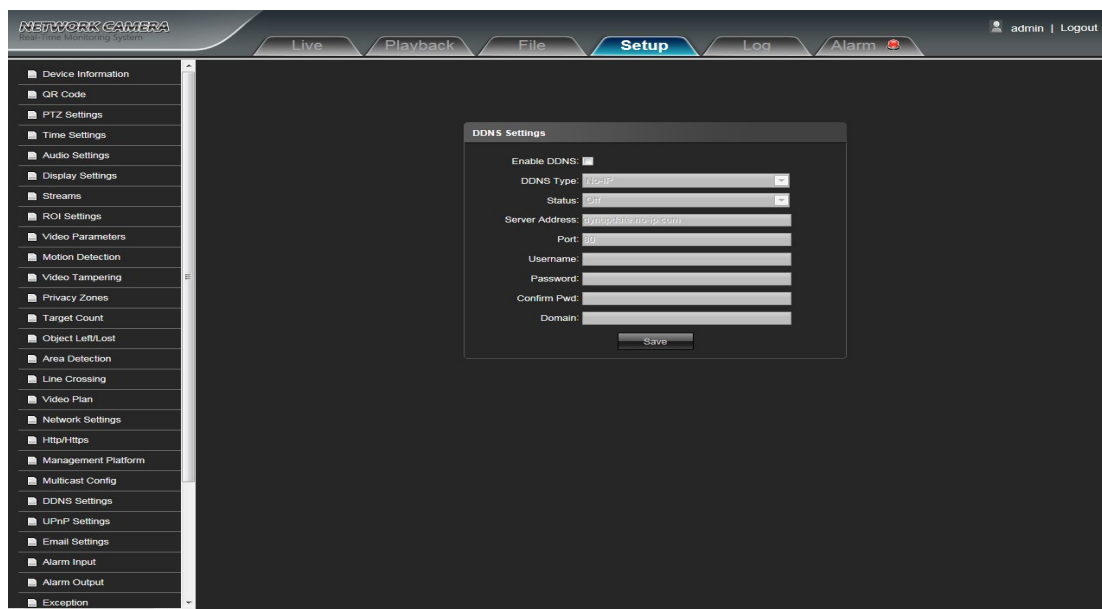
IP Camera Multicast Config interface as shown in the following figure:



Default disabling for multicast config. After click "Enable Multicast", users can set IP address, Port and TTL of primary stream video, primary stream audio, sub stream video, sub stream audio, third stream video, third stream audio

5.22 DDNS Setting

DDNS is implemented through a dynamic domain resolution server. It requires a PC running in the Server with fixed IP address on the Internet. IP Camera DDNS setting interface as below figure:



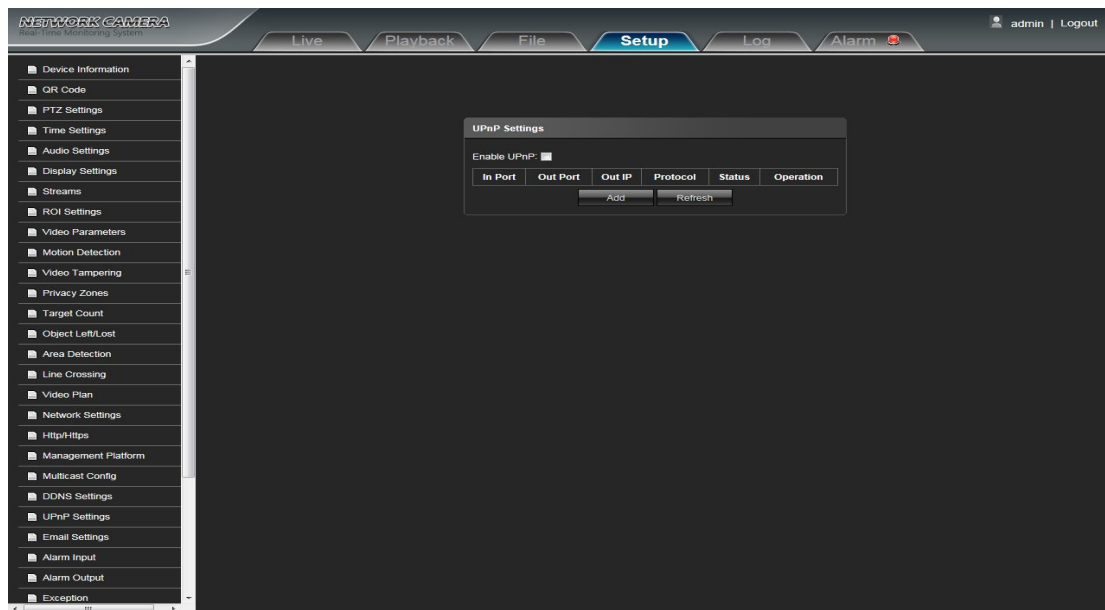
- **Enable DDNS:** Enable or Disable DDNS function
- **DDNS Type:** Select DDNS server type (There are DynDNS/ PeanutHull/ NO-IP/ 3322/ DnsDynamic five types selectable)
- **Status:** Select on or off

- **Server Address:** Input server name, for example, dynupdate.no-ip.com
- **Port:** Input port.default port is 80
- **User Name:** Input user name
- **Password:** Input password
- **Confirm pwd:** Input the password again to confirm it
- **Domain:** Input the second domain

After complete parameters setting, click Save and then the settings will take effect immediately

5.23 UPnP Settings

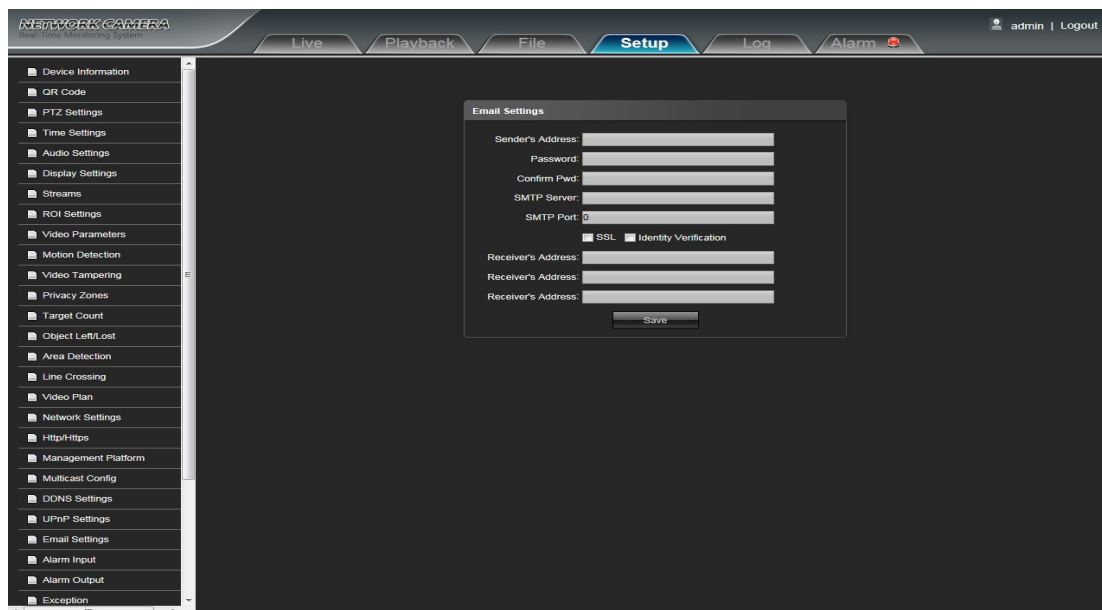
IP Camera UPnP Settings interface as shown in the following figure:



- **Enable UPnP:** you can choose whether to turn on the UPnP function. When enabled, the device can port mapping through the router.
- **Add:** optional TCP/UDP protocol, set internal and external port.

5.24 Email Settings

IP Camera Email Settings interface as shown in the following figure:

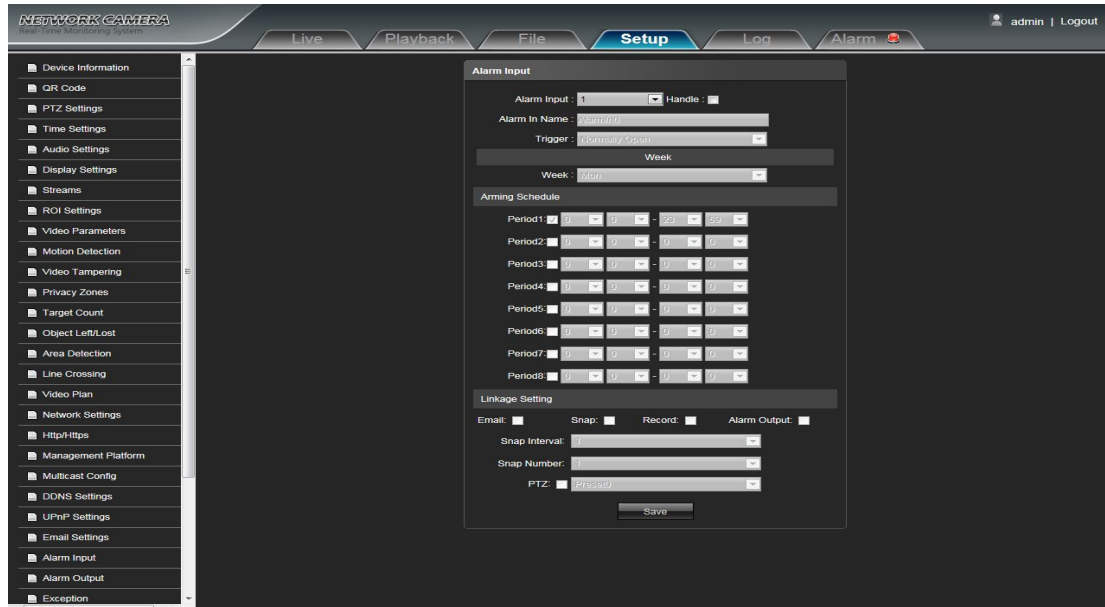


- **Sender's Address:** Input the address of the outbox
- **Password:** Input the the password of the outbox
- **Confirm pwd:** Input the password again to confirm it
- **SMTP Server:** Input the smtp server address of the outbox
- **SMTP Port:** Input the smtp server port of the outbox
- **SSL/Identity verification:** Tick **SSL** and **Identity verification** to send the email correctly and safely
- **Receiver's Address:** Input the address of the inbox, fill in the address of receiving email,and can fill in 3 address of receiving email

After complete all parameters setting, click Save and then the settings will take effect immediately

5.25 Alarm Input

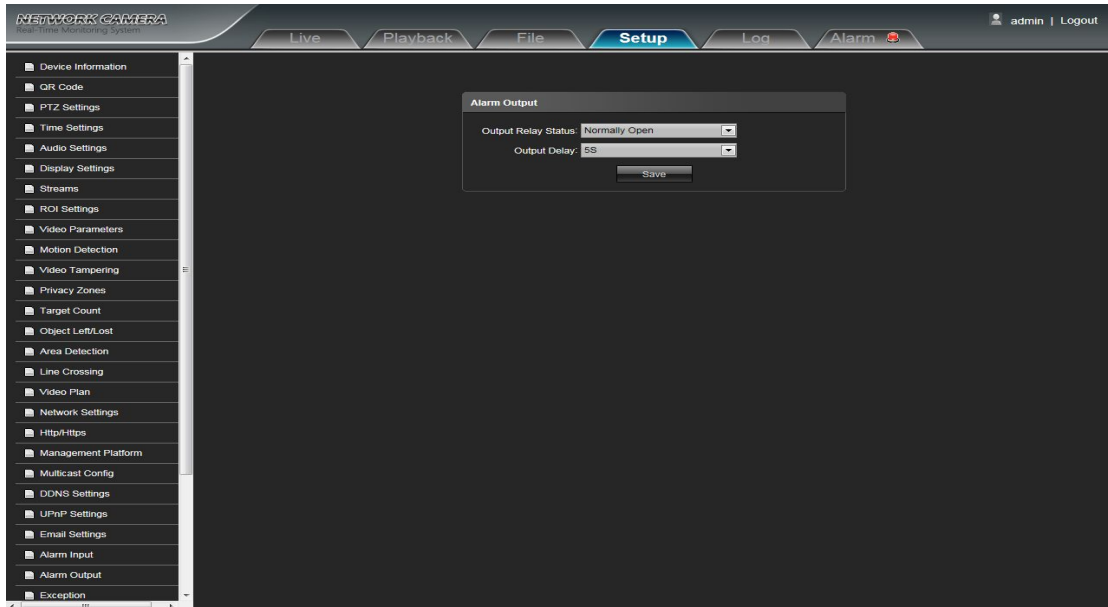
IP Camera Alarm Input setting interface as shown in the following figure:



- **Alarm Input:** Select the alarm input port, then click **Handle :** can implement following parameters settings
 - **Alarm In Name:** Input alarm input name
 - **Trigger:** Select the alarm status: Normally Open/ Normally Close
 - **Arming Schedule:** Arming schedule can be set from Monday to Sunday, one day can set up 8 time quantum
 - **Email:** Click Email. Once alarm triggers that it will send Email to appointed mailbox
 - **Snap:** Click Snap. Once alarm triggers that it will linkage camera to snapshot picture and store it in the TF card
 - **Record:** Click Record. Once alarm triggers that it will linkage camera to record video and restore it in the TF card
 - **Alarm Output:** Click Alarm Output. There is a active warner connected to the alarm output port. Once alarm triggers that it will linkage embedded relay switch to make alarm output
 - **Snap Number:** Set the snapshot image count for every time
 - **Snap Interval:** Set the snapshot interval time
 - **PTZ:** Enable or disable PTZ function
 - **Preset:** When alarm input triggers alarm, it will linkage the presets
- After complete all parameters setting, click Save, the settings will take effect immediately

5.26 Alarm Output

IP Camera Alarm Output setting interface as shown in the following figure:

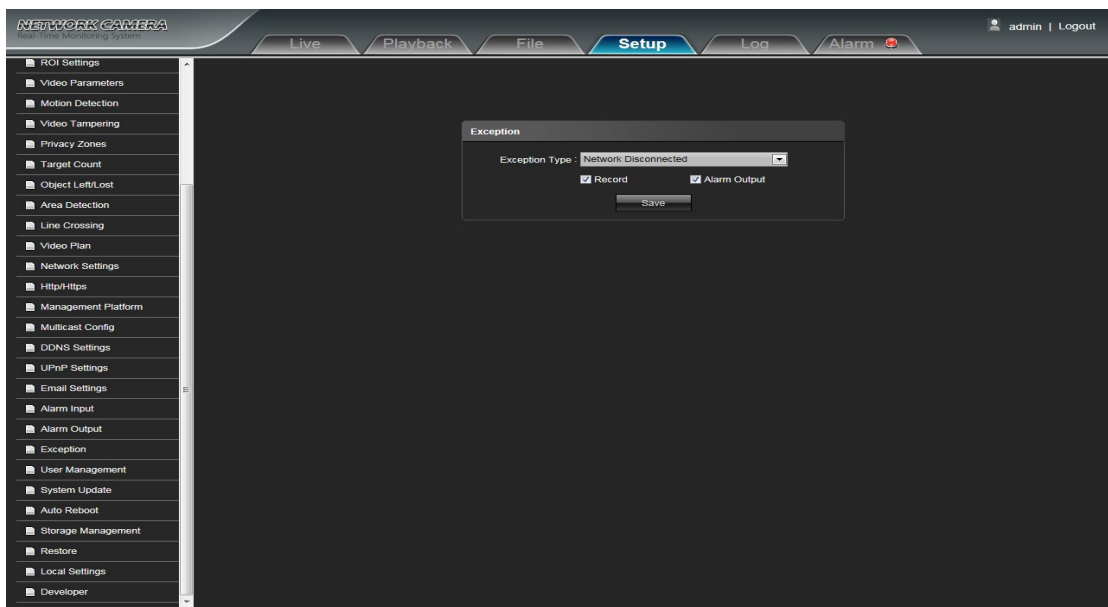


- **Output Relay Status:** Normally Open/ Normally Close selectable
- **Output Delay:** Select the alarm output delay time(when alarm trigger is over, it will output corresponding alarm delay time)

After complete all parameters setting, click Save and the settings will take effect immediately

5.27 Exception

IP Camera Exception interface as shown in the following figure:

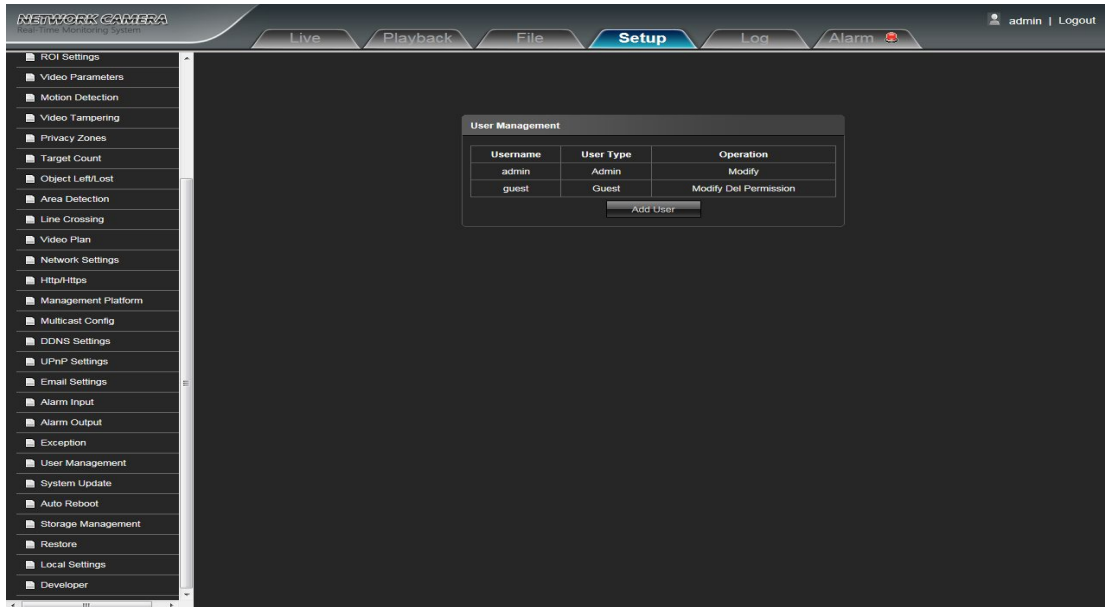


- **Exception Type:** There are Network Disconnected/ IP Address Conflict/ Illegal Access/ three exception types selectable
- **Record:** Click Record, it will linkage to record video as any exception type triggers

- **Alarm Output:** Click Alarm Output, it will Linkage other alarm devices as any exception type triggers
After complete all parameters setting, click Save and then the settings will take effect immediately

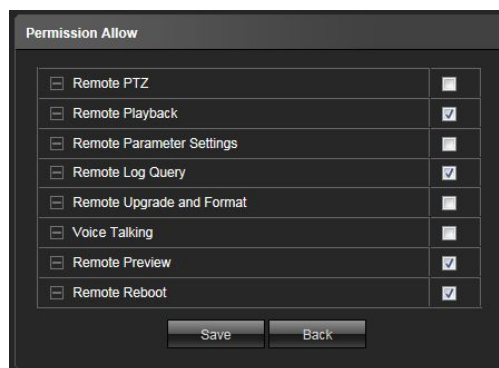
5.28 User Management

IP Camera User Management setting interface as below figure, admin is the administrator (default), default indicates general users.



- **Modify:** The admin user can modify the login password, the default guest user can modify user type. While the new added user can modify user name, login password and user type. Otherwise, the new added user can select Guest/Operator two types, and set the different permission assignment in the Right Permission setting
- **Del:** Delete the new user
- **Rights Permission:** Permission assignment for the default guest user and new user
- **Add User:** Add a new user in need

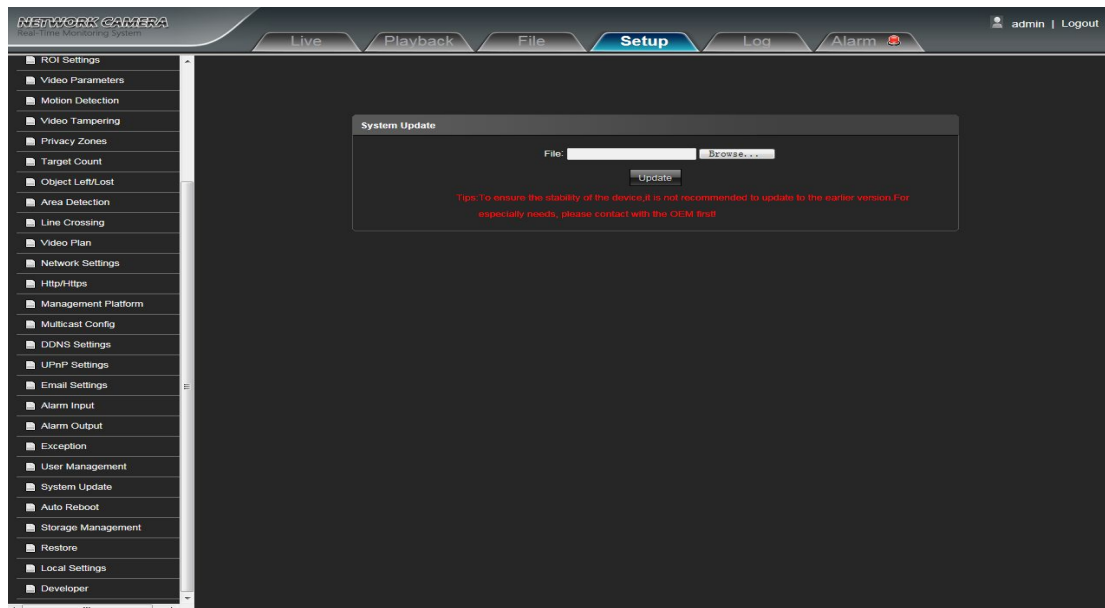
Start up and login permission is accord with default user permission(default), as shown in the following figure:



After complete all parameters setting, click Save and then the seetings will take effect immediately

5.29 System Update

IP Camera System Update setting interface as shown in the following figure:



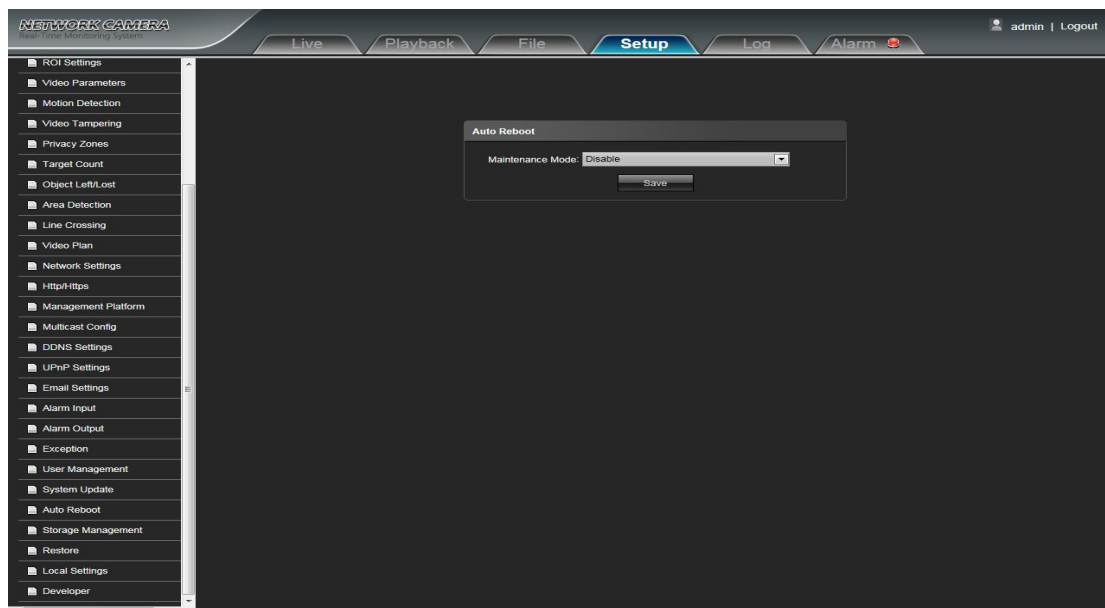
- **File:** Click Browse to find and select the upgrade kit, then click Update.



Non-technician should not try to operate system upgrade, do not cut off the power during upgrade process.

5.30 Auto Reboot

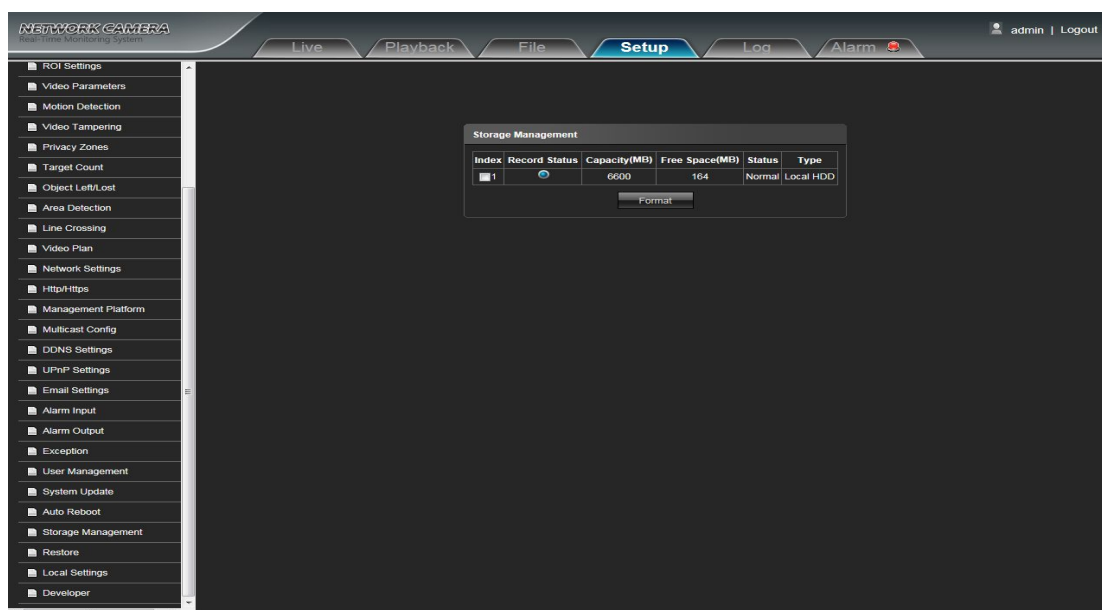
IP Camera Auto Reboot setting interface as below figure. Select Maintenance Mode, there are Disable/ Every Day/ Every Week/ Once / Every Month five modes optional, then IPC will reboot as appointed mode.



5.31 Storage Management

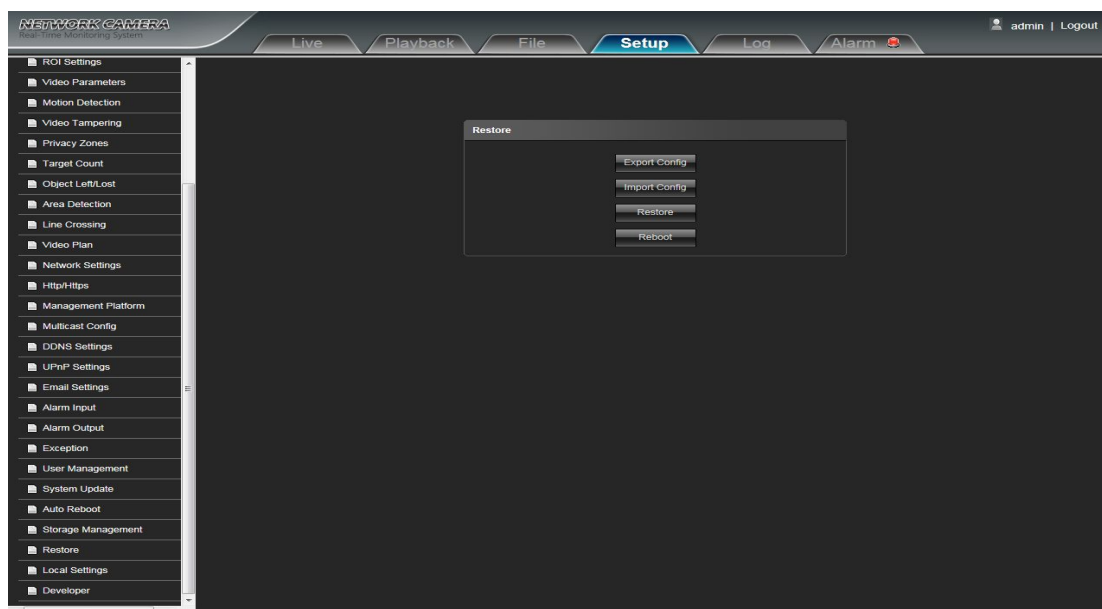
IP Camera Storage Management setting interface as below figure, you can check current TF card Capacity(MB)/ Free Spare (MB)/ Status, and format TF card. As shown in the following figure:

Note: Please turn off the power supply, before you insert or take out the TF card.



5.32 Restore

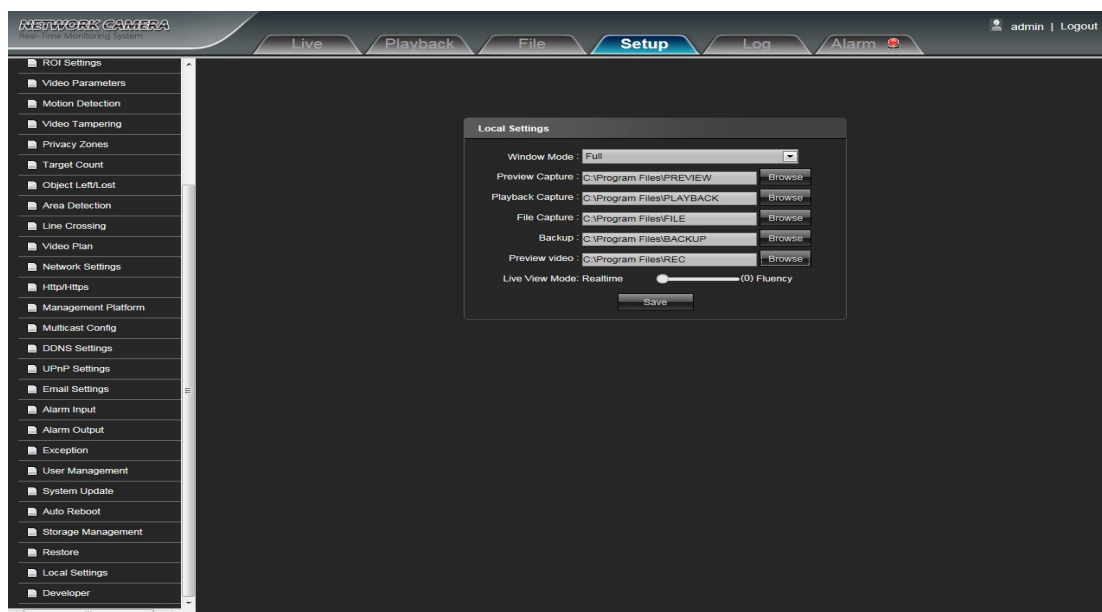
IP Camera Restore setting interface as shown in the following figure:



- **Export:** Export all configurations to PC or USB
- **Import Config:** Import selected configuration to the system
- **Restore:** Restore the factory settings
- **Reboot:** Reboot the device

5.33 Local Setting

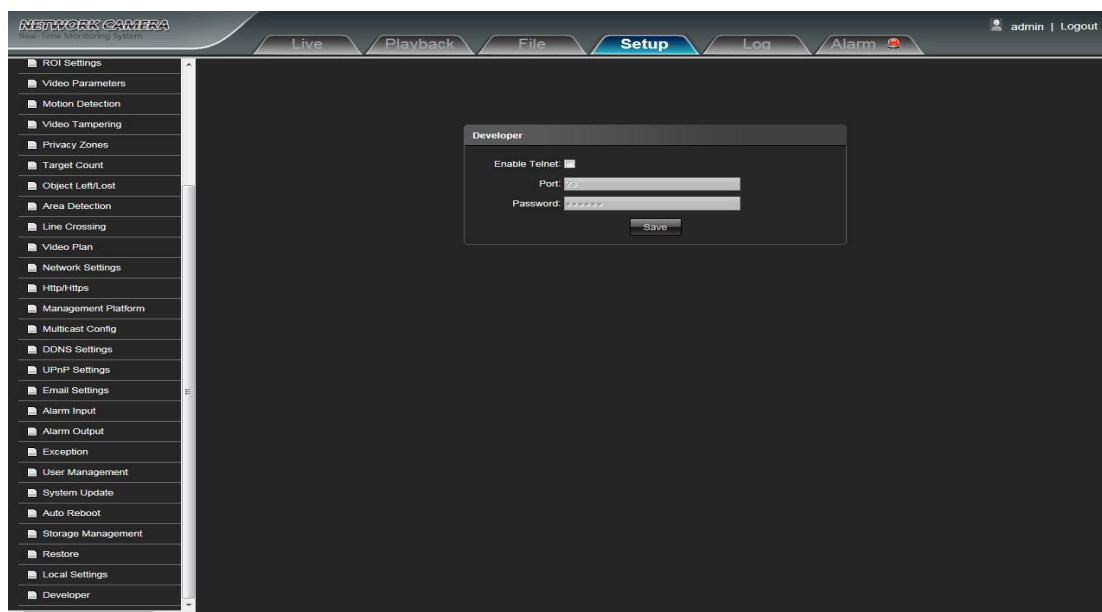
IP Camera Local Setting interface as shown in the following figure:



- **Window Mode:** Set the preview window mode(Full/ 4:3/ 16:9/ Original Image optional)
 - **Preview Capture:** Select and modify the preview capture file storage path
 - **Playback Capture:** Select and modify the video record capture file storage path
 - **File Capture:** Select and modify the file management capture file storage path
 - **Back Up:** Select and modify video record backup file storage path
 - **Preview Video:** Select and modify the preview interface video record file storage path
 - **Live View Mode:** Realtime/ Smoothway two types selectable, the value of them can be adjustable
- After complete all parameters settings, click Save and then the settings will take effect immediately

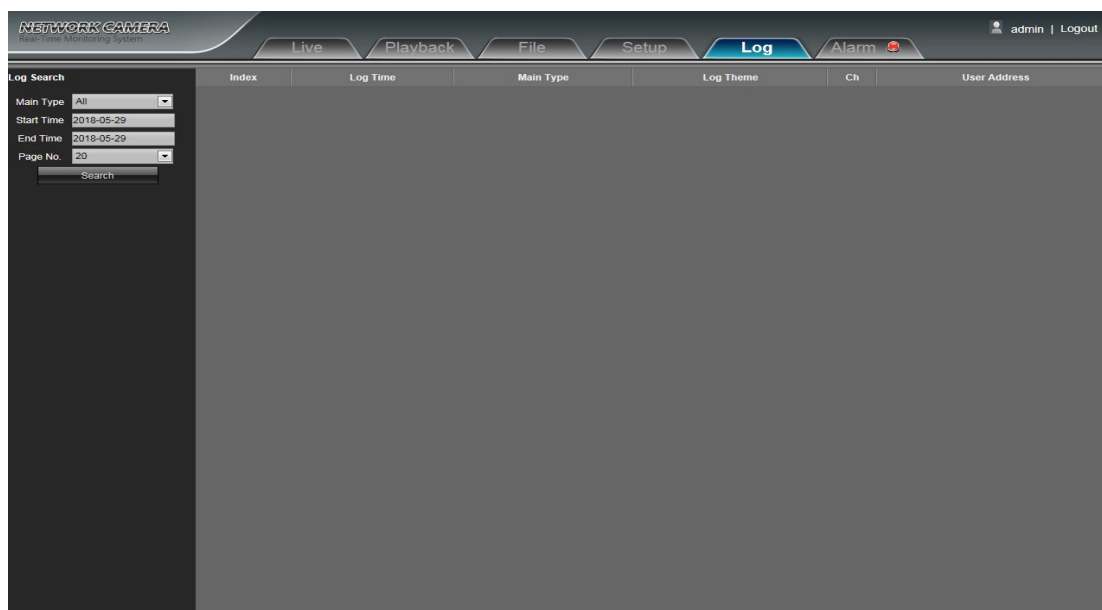
5.34 Developer

IP Camera Developer interface as shown in the following figure:



6. Log

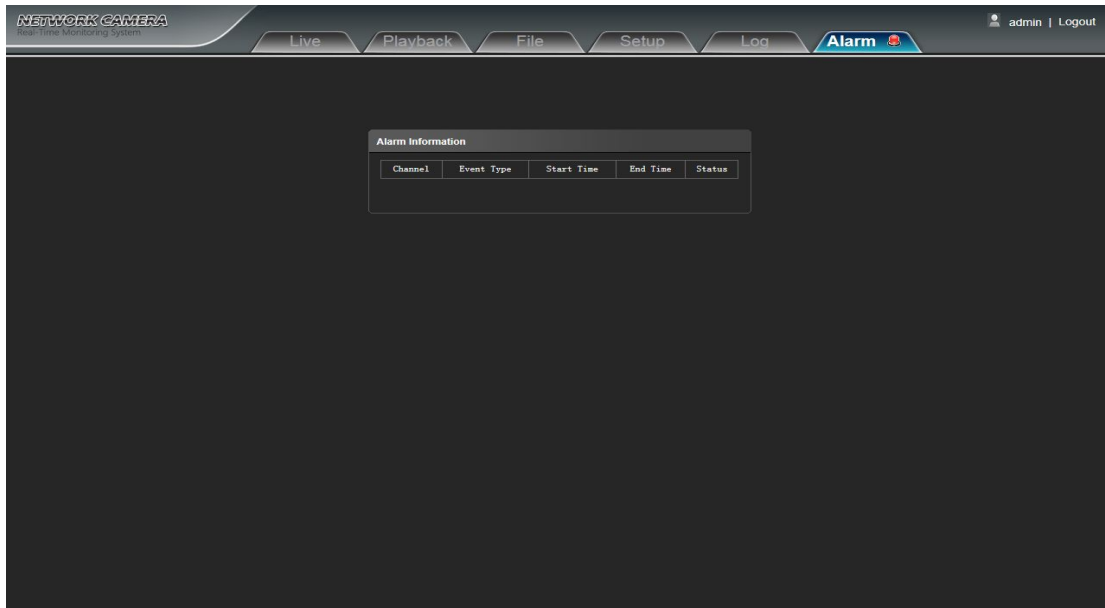
Click Search on the Log interface, check device log according to the video type and date time, as shown in the below figure:



- **Main Type:** Select the log type to check. There are All/ Alarm/ Exception Settings/ Operation / Setup optional, or click All to check all types of them
 - **Start Time/ End Time:** Select the time quantum of log to check
 - **Page No.:** Select the log number of each page to display on the interface
- After finishing all settings above, click Search and then the log information will display on the left blank area

7. Alarm

IP Camera Alarm interface as shown in the following figure, Warns light flashing when camera device inform alarm.
Support kinds of alarms record



8. Exit

Click Logout to log out, as shown in the following figure:

