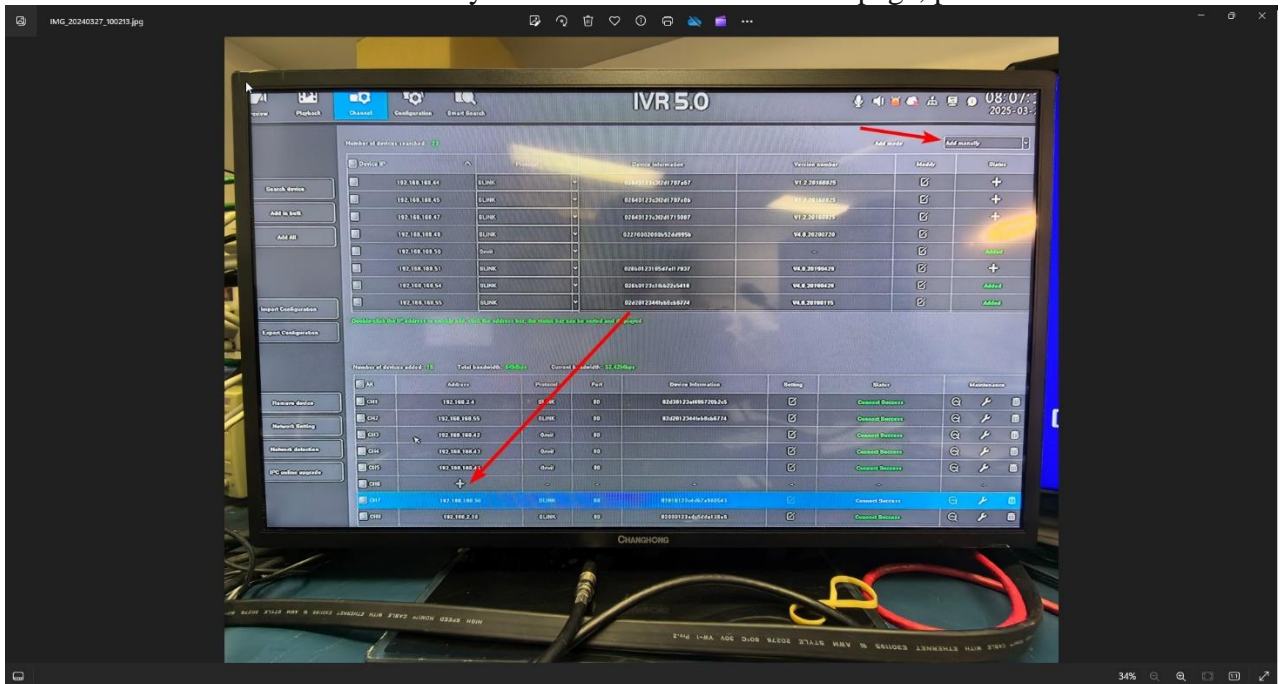


This new system IVR5.0 may not pick up some old DOSS cameras, or it may show the camera under the SLINK protocol but fail to connect. If this is the case, have to manually add those cameras in the NVR via the ONVIF protocol.

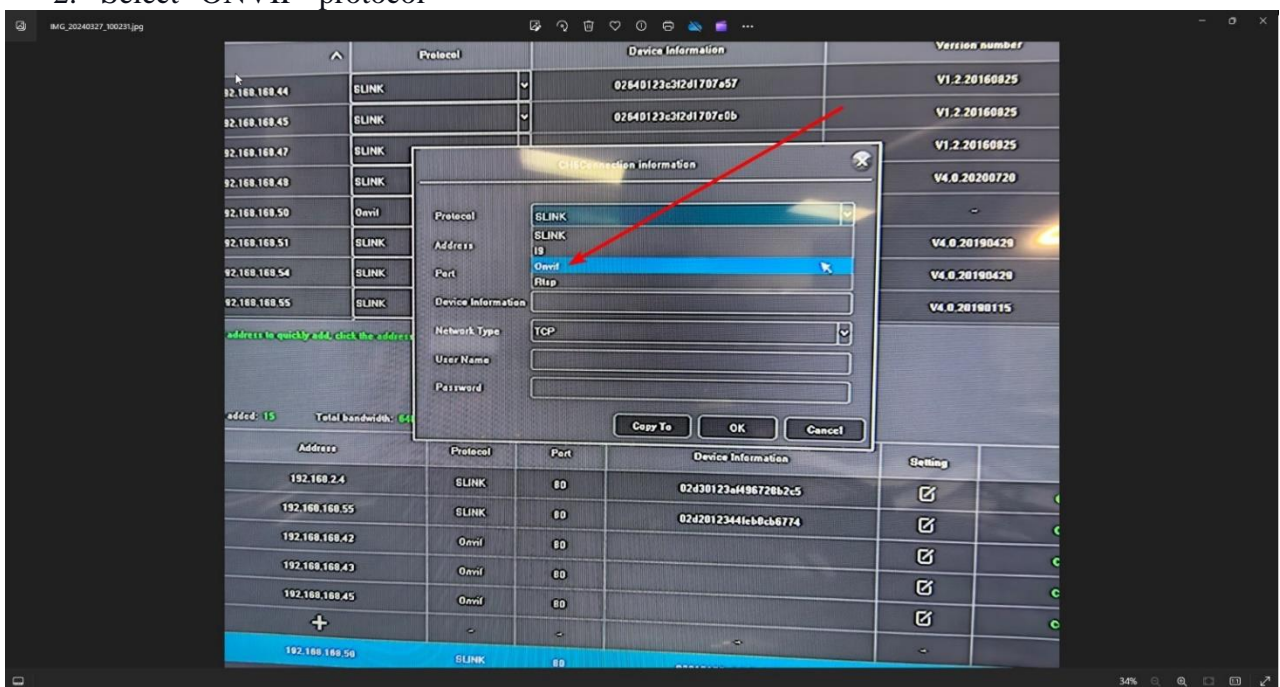
You will need to know the camera IP address user name (admin) and password, old DOSS cameras use blank (no password) as the default, or 123456.

If the camera does now show up from the search and you don't know the camera's IP address, you can use the PC [IP search tool](#) to find it from your network.

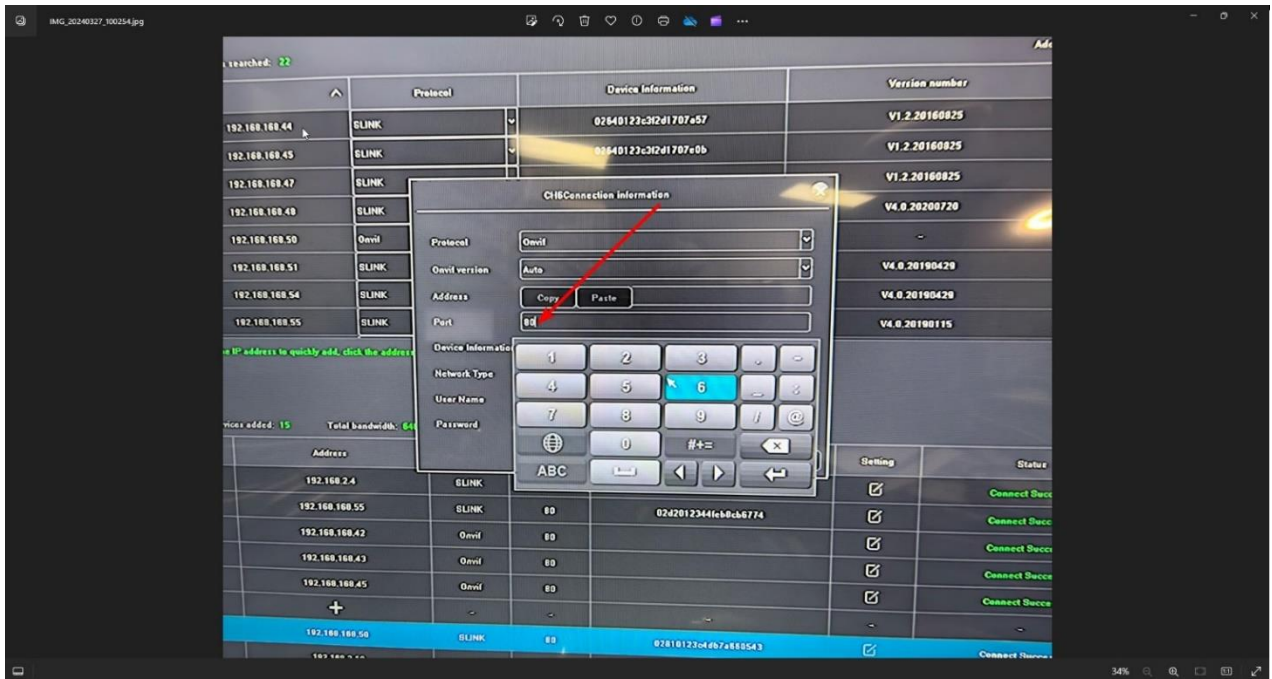
1. Make sure it is "add manually" and from the bottom of the page, press "+"



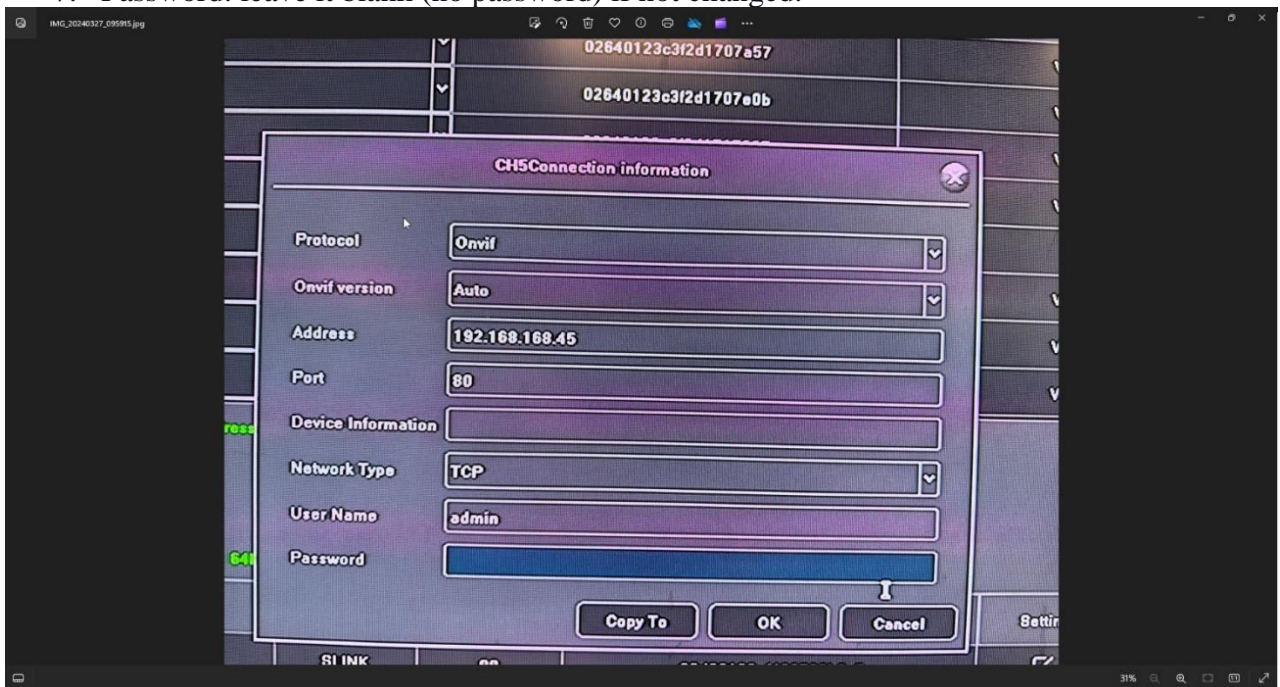
2. Select "ONVIF" protocol



- Type in the IP address of the camera
- Change the port to 80**



- The device information can be blank.
- User name: admin
- Password: leave it blank (no password) if not changed.



- Will see the connection status from the screen if successful