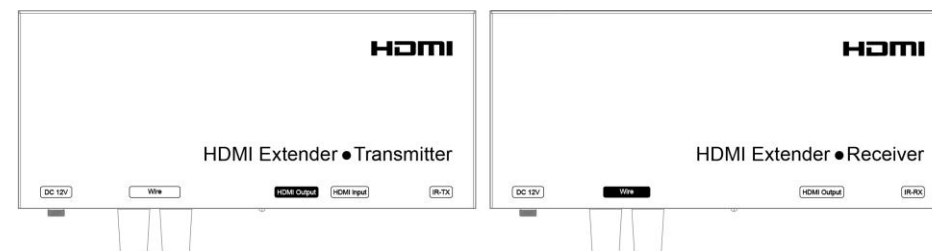


HDMI Extender over any wire HDMI AW Transmission more than 3800M

Operating Instructions



Dear Customer

Thank you for purchasing this product. For optimum performance and safety, please read these instructions carefully before connecting, operating or adjusting this product. Please keep this manual for future reference.

FEATURES

- HDMI over 2-conductor cable
(Such as Twisted cable, telephone cable, Cat5e/6/7 cable etc)
- With 1x Loop HDMI output at transmitter
- Transmission more than 3800m
- Support Multi-level cascading
- HDMI Resolution up to 1080p
- HDCP compliant
- IR pass-through control
- Power Supply DC12V



This product is NOT "HDMI over AC"!

Please ensure you do not establish a direct connection between the transmitter and the receiver using an active AC power outlet. Doing so will damage your unit and will be dangerous !

This product can't work with existing power lines in the home or building directly !

NOTICE

Our company reserves the right to make changes in the hardware, packaging and any accompanying documentation without prior written notice.

TABLE OF CONTENTS

- Specifications
- Package Contents
- Panel Descriptions
- Connecting and Operating
- Typical Application
- Maintenance
- Product Service
- Warranty

SPECIFICATIONS

Operating Temperature Range	-10 to +50°C(+14 to +122°F)
Operating Humidity Range	10 to 90%RH (No Condensation)
Support Audio Format	LPCM audio format
Transmission Distance	3800m 2-Conductor cable(Recommend to use 12AWG-19AWG cable)
Support Video Format	DTV/HDTV:480i/ 480P/576i/576P/720P/1080i/1080P
	VESA: 800x600, 1024x768, 1280x768,1280x960,1280x1024,
	1680x1050,1920x1080, 1280x720, 1360x768,1400x1050,1280x1024.
Connector on Transmitter	1x HDMI Input, 1x HDMI Looing output
	1x3.5mm jack for IR-TX
	1x Red Terminal Post, 1x Black Terminal Post
	DC 5.5 x2.1mm Jack
Connector on Receiver	1x Red Terminal Post, 1x Black Terminal Post
	1x HDMI Output, 3.5mm
	1x3.5mm jack for IR-RX
	DC 5.5 x2.1mm Jack
Power consumption	Transmitter: 6.5watts(Maximum),Receiver:5.5watts (Maximum)
Dimension (LxWxH)	L206.2xW110xH33mm
IR frequency	38K-56KHZ
Net Weight	Transmitter: 545g Receiver: 548g

Note1: Specifications are subject to change without notice. Mass and dimensions are approximate.

PACKING CONTENTS

- 1) . Main Unit: HDMI Extender(Transmitter& Receiver)
- 2) . 2x Power Adapter DC 12V
- 3) . 8x Screws
- 4) . 4x Detachable Mounting Ears
- 5) . 1x User's Manual



- 1 THIS PRODUCT IS WARRANTED FOR 12 MONTHS FROM THE DATE OF PURCHASE.**
Subject to the conditions of this warranty, the Customer Care Centre will perform necessary service on the product without charge for parts, or labour if, in the opinion of the manufacturer/ manufacturer's agent, the product is found to be faulty within the warranty period.
- 2** This warranty only applies if the product has been installed and used in accordance with the manufacturer's recommendations (as noted in the operating instructions) under normal use and reasonable care. The warranty covers normal domestic use only and does not cover damage, malfunction or failure resulting from use of incorrect voltage, accident, misuse, neglect, build-up of dirt or dust, abuse, mis-adjustment of customer controls, mains supply problems, thunderstorm activity, infestation by insects or vermin, tampering or repair by unauthorised persons (including unauthorised alterations), exposure to abnormally corrosive conditions or any foreign object or matter having entered the product.
- 3** If warranty service is required you should:
 - Telephone the Customer Care Centre on 1300 662 946
 - Provide a copy of your purchase receipt that shows retailer's identity and date of purchase.
 - Send or bring the product to your Customer Care Centre.
Please note that freight to and/or from your Customer Care Centre must be arranged by you.
- 4** The warranties hereby conferred do not extend to any costs associated with the delivery, handling, freighting or transportation of the product or any part thereof or replacement of and do not extend to any damage or loss occurring during, or associated with transit.

**THIS WARRANTY CARD AND THE PURCHASE DOCKET
(OR SIMILAR PROOF OF PURCHASE)
SHOULD BE RETAINED BY THE CUSTOMER AT ALL TIMES**

**TROUBLE SHOOTING HELP LINE
1300 662 946**

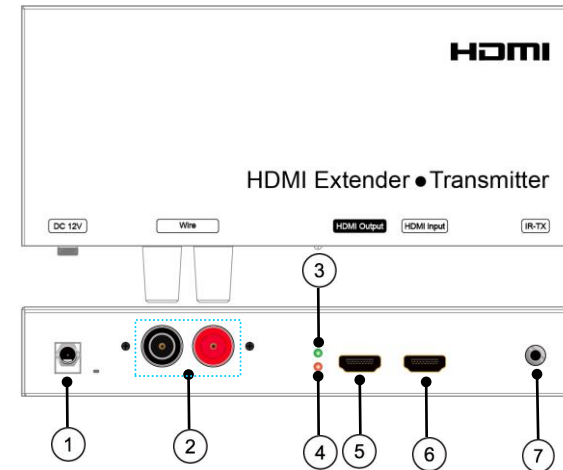
Customer Care Centre
562 Spencer Street, West Melbourne
VICTORIA 3003

Pro.2
Providing AV Solutions

This advice does not limit, override or later your guaranteed rights under the Australian Consumer Law, including remedies for any failure of the Consumer Guarantees, which may include repair or replacement or it a Major Failure (as defined under the Australian Consumer Law) a replacement or refund. These guaranteed rights cannot be varied by Pro.2 or retailers of its products and have no set time limit.

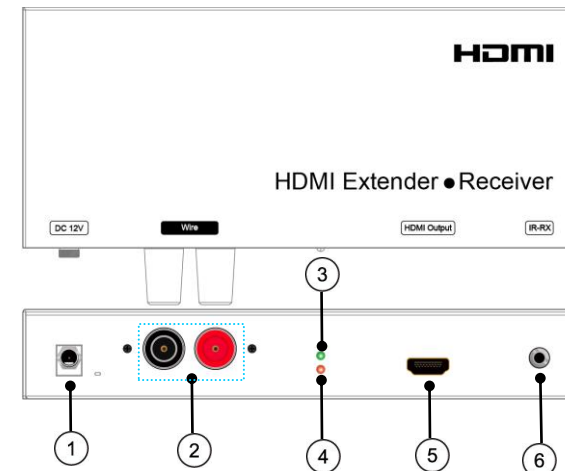
PANEL DESCRIPTIONS

Transmitter Panel



- | | |
|-----------------------------------|---|
| 1) Power input port | 2) Terminal Post to connect 2-conductor cable |
| 3) Green indicator of data status | 4) Red indicator of power input |
| 5) HDMI Output port | 6) HDMI Input port |
| 7) IR-TX | |

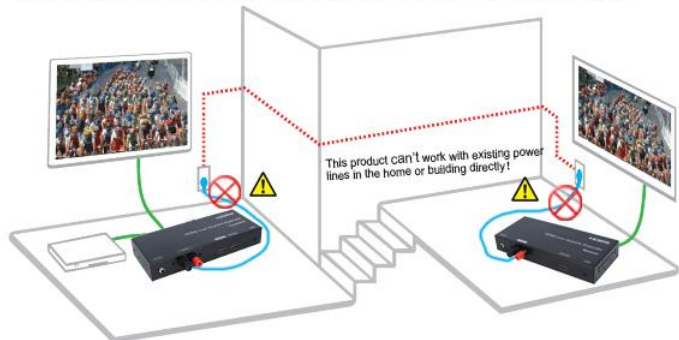
Receiver Panel



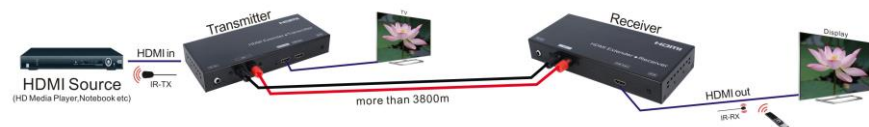
- | | |
|-----------------------------------|---|
| 1) Power input port | 2) Terminal Post to connect 2-conductor cable |
| 3) Green indicator of data status | 4) Red indicator of power input |
| 5) HDMI Output port | 6) IR-RX |

Connection Diagram

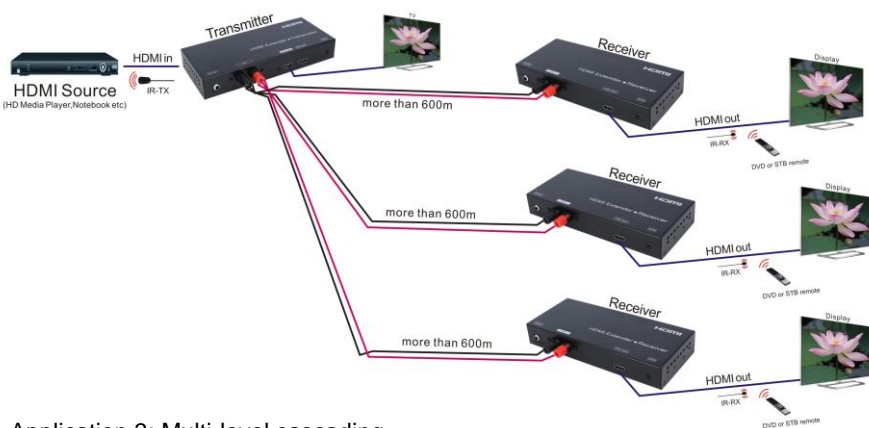
Warning!
 This product is NOT "HDMI over AC"! Please ensure you do not establish a direct connection between the transmitter and the receiver using an active AC power outlet. Doing so will damage your unit and will be dangerous!



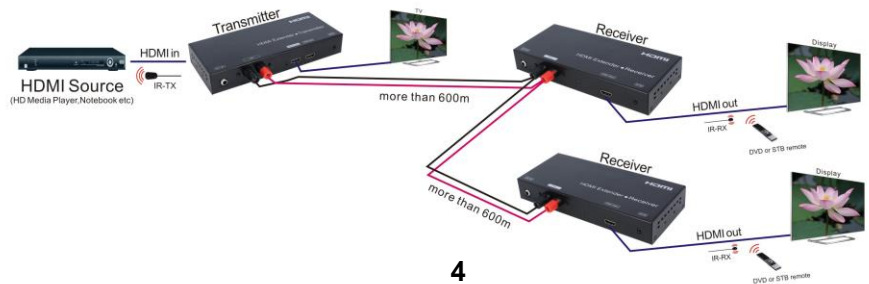
Application 1: Unicast



Application 2: Multicast



Application 3: Multi-level cascading



CONNECTING AND OPERATING

- 1) Connect the HDMI input source (such as HD-DVD/PS3/STB etc) into transmitter over HDMI cable.
 - 2) Connect the transmitter to the receiver by any 2-conductor cable.
 - 3) Connect the HDMI output (such as HD-LCD/HD-DLP) into the receiver over HDMI cable.
 - 4) Connect the IR TX cable into "IR TX" port of the transmitter; Connect the IR RX cable into "IR RX" port of the receiver.
 - 5) Connect power adapter in to the transmitter and receiver.
- NOTE: Insert/Extract cables gently.

MAINTENANCE

Clean this unit with a soft, dry cloth. Never use alcohol, paint thinner or benzene to clean this unit.

PRODUCT SERVICE

1) Damage requiring service:

The unit should be serviced by qualified service personnel if:

- (a) The DC power supply cord or AC adaptor has been damaged;
- (b) Objects or liquids have gotten into the unit;
- (c) The unit has been exposed to rain;
- (d) The unit does not operate normally or exhibits a marked change in performance;
- (e) The unit has been dropped or the cabinet damaged.

2) Servicing Personnel: Do not attempt to service the unit beyond that described in these operating instructions. Refer all other servicing to authorized servicing personnel.

3) Replacement parts: When parts need replacing ensure the servicer uses parts specified by the manufacturer or parts that have the same characteristics as the original parts. Unauthorized substitutes may result in fire, electric shock, or other hazards.

4) Safety check: After repairs or service, ask the servicer to perform safety checks to confirm that the unit is in proper working condition.