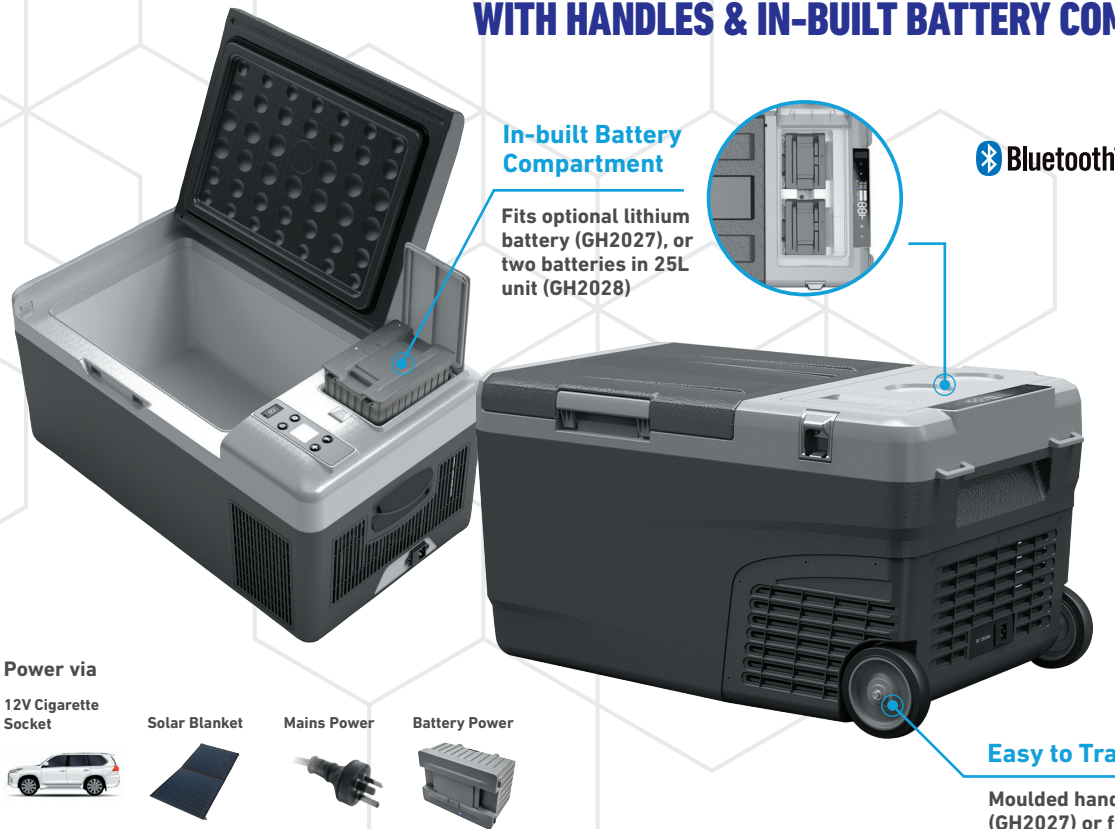




**BRASS
MONKEY**

COMPACT PORTABLE FRIDGE / FREEZERS

WITH HANDLES & IN-BUILT BATTERY COMPARTMENT

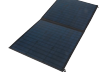


Power via

12V Cigarette
Socket



Solar Blanket



Mains Power



Battery Power



 **Bluetooth®**


**SOLAR
READY**


**BATTERY
COMPATIBLE**


**MOBILE APP
CONTROL**


**3 YEAR
WARRANTY**

Easy to Transport

Moulded handles on 15L model (GH2027) or fold-up handle and wheels on 25L version (GH2028).

COOL TO GO

Small in size but huge on practicality, these fridge/freezers are compact enough for use on the worksite or a weekend getaway and weigh in at just 8.6kg (GH2027) and 17.5kg (GH2028), respectively. Whilst the larger model can hold a slab and a half, both can chill their contents down to -20°C. They also feature three-stage protection to ensure your car battery isn't flattened or damaged while they're plugged in.

Apart from drawing power from a 12/24VDC cigarette lighter socket, they can be plugged into the mains using an included 240VAC adaptor, or operate unplugged thanks to optional lithium batteries. Plus they feature a robust plastic casing that will be appreciated by tradies and campers alike.

WHY YOU NEED IT

- Dual battery compartment on 25L unit (GH2028) doubles off-grid endurance, even without solar charging.
- Lightweight 15L model (GH2027) can hold up to 20 cans while being energy-efficient and easy to carry.

BEST FOR...

- A day trip or weekend away
- Tradie use
- Ute, boat, tent, caravan... you name it

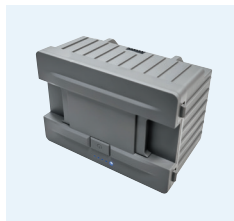
ADDITIONAL FEATURES

- Quiet with little noise less than 38dB
- LED internal light for easy finding of food in the dark (GH2028)
- USB charging output port
- Digital control panel
- Solar ready (get power directly from a solar panel)
- 3-stage low voltage battery protection
- 12/24V car cigarette power lead & 240VAC to 12VDC mains power adaptor included

ACCESSORIES



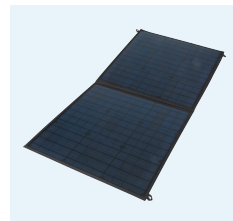
**POWER SUPPLIES
& CABLES**



**REMOVABLE
LITHIUM BATTERIES**



INSULATED COVERS



SOLAR PANEL



FRIDGE STAND



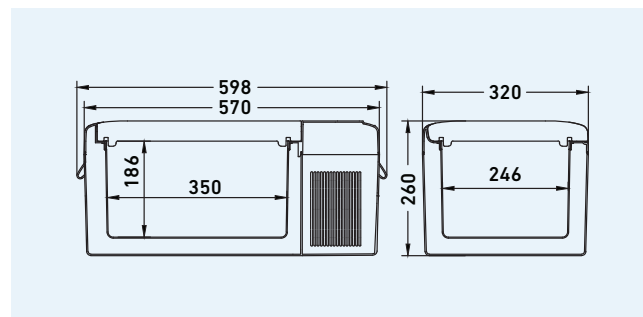
brassmonkey.cool



SPECIFICATIONS

Volume (Litres)	15
Dimensions (L x W x H mm)	598 x 320 x 260
Weight (kg)	8.6
Power Source	12-24V DC, 100-240V AC or optional battery
Cat. No	GH2027

DIMENSIONS



SPECIFICATIONS

Volume (Litres)	25
Dimensions (L x W x H mm)	666 x 393 x 354
Weight (kg)	17.5
Power Source	12-24V DC, 100-240V AC or optional battery
Cat. No	GH2028

DIMENSIONS

