

quest[™]
engineering

MX SERIES



High-Fidelity Weatherproof Loudspeakers

MX Series High-Fidelity Weatherproof Loudspeakers

The Quest Engineering MX Series are the first audio installation loudspeakers to meet the highest environmental ingress and audio fidelity standards whilst being available at an affordable commercial audio cost. Designed to integrate into any architectural commercial environment, its exceptional audio quality and componentry ensures a long performance service life.



Available in Black (MX601 / MX801)
or white (MX601W / MX801W).

Designed to Fit in

The rectangular speaker casing features subtly curved surfaces finished with a non reflective material. This combination blends well into both heritage and contemporary designed spaces. The high fidelity audio delivers exceptional performance allowing architects and venue designers to create a seamless full range audio presence.

Fit for any Environment

Designed and built from the ground up, the MX Series delivers an exceptional audio and environmental performance without compromise. The result is an IP67* rated professional audio loudspeaker capable of living in the harshest of outdoor environments whilst delivering outstanding audio performance.

*IP67 Rated when used with IPMX1 kit (IP56 without)

Big Sound for a Little Speaker

Keeping a compact form allowed the MX Series to integrate into interior environments easily and simplify installation.

Keeping it Simple

The MX Series was designed to enable hi-fi performance audio to be achieved without the need for sophisticated electronics. The plug and play series allows fast installation and delivery of high fidelity sound without additional hidden costs.

Keeping it Safe

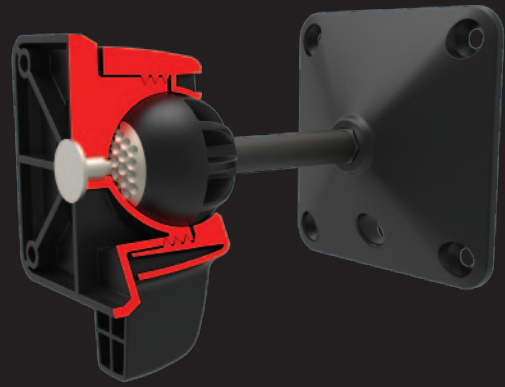
The MX Series not only delivers high level outputs but integrates system safeguards that protect from extreme levels ensuring a long service life.



Q-Mount Mounting Systems

The Q-Mount UB1 wall mount and UB2 ceiling mount are revolutionary installation systems for pro-audio speakers.

The patent pending innovation delivers full articulation with replicable positioning accuracy, exceptional weight carrying capacity and easy user installation in a simple, lightweight compact form.



A Heavy Lifter

The Q-Mount's patented interlock system uses the latest in polymer composite technology providing the required stiffness with an exceptional holding strength. This enables excellent load lifting capacity while minimizing the visible footprint of the bracket.

Fast & Accurate Positioning

The Q-Mount allows for quick and easy repositioning within multiple array configurations. Each speaker can be accurately positioned time and time again with a simple turn of the locking handle. The speaker can also be quickly moved from portrait to landscape modes by simply pivoting the locking pin.

Reducing Installation Time & Cost

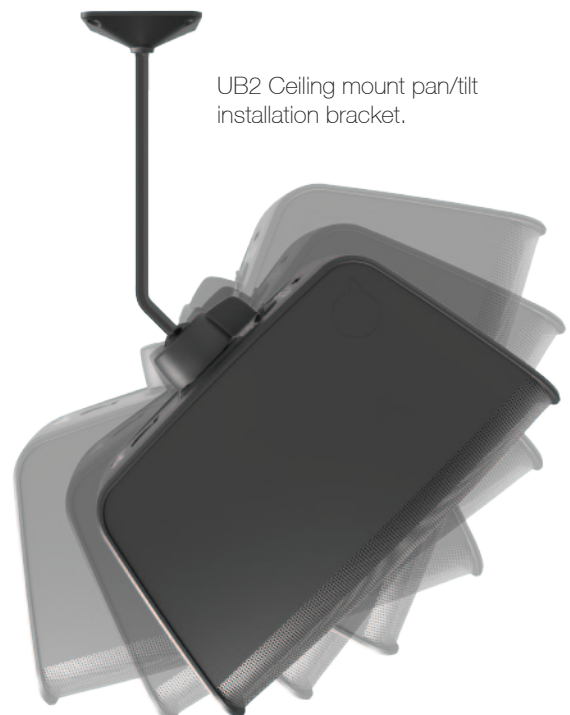
The Q-Mount enables a single installer to safely mount, locate and accurately position the speaker without the need for additional tools.

A Hidden Powerhouse

By delivering high level functionality with simplified componentry, the Q-Mount delivers a system with the smallest visible footprint possible. Functional elements are positioned on the speaker side of the system leaving the wall plate as the only visible presence to the mounting systems existence. Just about a minimal as you can get.



Full articulation enables +/- 30° horizontal and vertical axis movement in portrait and landscape orientations.



Technical Parameters	MX601 / MX601W		MX801 / MX801W	
Max SPL *calculated	108 dB		112 dB	
Sensitivity *5-band average	91 dB		93 dB	
Frequency Response	80Hz – 20kHz ±2dB		75Hz – 20kHz ±2dB	
Impedance	16Ω			
Transformer Taping	100V: 10w/20w/30w/40w		100V: 20w/30w/40w/60w	
	70V: 5w/10w/15w/20w		70V: 10w/15w/20w/30w	
Amplifier Power	RMS:75W	Peak 150W	RMS: 100W	Peak : 200W
Transducers	HF: 25mm Titanium Dome Tweeter	LF: 6" High Performance Polypropylene Woofer	HF: 25mm Titanium Dome Tweeter	LF: 8" High Performance Polypropylene Woofer
Directivity *H x V	150° x 120° -10dB			
Connections	Captive Screw Terminal Plug (In/Thru)			
Environmental Ingress Rating	Speaker Cabinet IP56 (IP67 when used with IPMX1 kit)			
Dimensions *H x W x D	303 x 184 x 175mm		345 x 202 x 243mm	
Net Weight	3.5 kg		4.3 kg	
Shipping Weight	5.4 kg		6.0 kg	

* Quest Engineering reserves the right to make changes in specifications, or products without prior notice.

The figures shown above are 'real world', usable specifications and are conservative as a result. Quest Engineering does not believe in portraying misleading or exaggerated specifications.

