



HOW TO ACCESS YOUR DOSS DVR REMOTELY

Please note:

These instructions are based on the DOSS DVR models: DVR4CH, DVR8CH, and DVR16CH. However, the basic principles apply to a variety of scenarios.

Accessing your DOSS DVR from your local network is easy by pointing your PC or phone to the DVR's local IP address. However, if you want to access your device remotely, then you need to setup port forwarding and use your modem/ router's external IP address.

First you need to find the IP address for your DVR, make a note of it, and make sure that your modem/ router is forwarding all requests to view your DVR correctly.

Write down the following information before you begin:

Your DVR's IP Address and Port Numbers:

Get it from your DVR

Default Username: Admin

Default Password: 123456

MAIN MENU > ADVANCED > NETWORK

HTTP PORT

VIDEO PORT



SCREENSHOT FROM THE DOSS DVR4CH.
FOR REFERENCE ONLY.

Your EXTERNAL IP Address:

Get it online by visiting:

<http://whatismyip.com>

What Is My IP Address - WhatIsMyIP.com

Your IP Address Is: 202.219.241.235

example

Access details to your modem/ router

including its IP address (eg. 192.168.1.1, 10.1.1.1) and the username and password to modify settings.

(consult your modem/ router user manual or try: <http://www.routerpasswords.com> for default passwords for common routers)

Once you have all the information above, you then need to forward all requests that come on a specific port to your DVR.

Port forwarding settings vary greatly from one modem/ router to another and it is impossible to cover that here. The following website lists almost all modem/ routers available on the market, so to find instructions specific to your brand and model, please visit:

http://portforward.com/english/routers/port_forwarding/routerindex.htm

Find your particular modem/ router from the brand and model list. You just need to figure out where to find the port forwarding settings on your modem/ router's configuration page, so choose HTTP from the programs list just as a starting point, and ignore everything else on that page.

Once you are in your router/ modem's Port Forwarding page, you need to create two entries for both the HTTP PORT and VIDEO PORT to point to your DVR.

Put in the IP ADDRESS and the HTTP PORT that you got from your DVR.
Create another entry and put in the same address, but this time input the VIDEO PORT you got from your DVR.

Port Forwarding

On	Proto	Src Address	Ext Ports	Int Port	Int Address	Description
On	Both		80		192.168.168.40	DVR HTTP
On	Both		9998		192.168.168.40	DVR VIDEO

TO ACCESS YOUR DVR REMOTELY

WEB CLIENT

Using internet explorer, visit:

HTTP://EXTERNALIPADDRESS:HTTPPORT

for example: <http://202.219.241.235:80>

See the following page for instructions on how to install the Active X control if you are having problems accessing the web client.

ANDROID/ IPHONE MOBILE PHONE SOFTWARE

You can access your DVR on a variety of mobile devices. For the iPhone, search for **DVR CLIENT** on the iTunes app store.
For the Android version, download it from

<http://www.wintal.com.au/files/software/DvrClient-2010-06-30.apk>

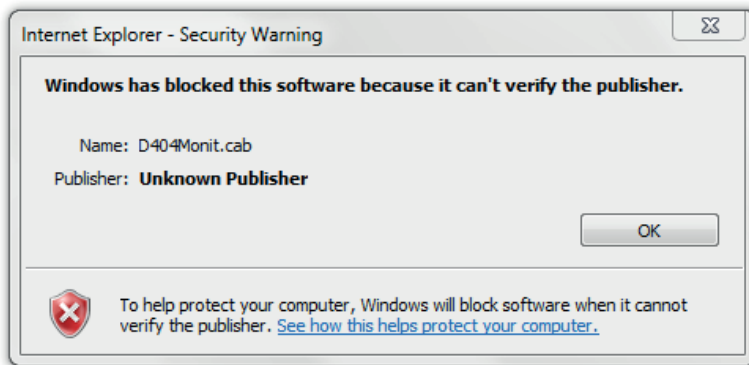
(make sure you enable installation from unknown sources in your applications settings on your phone)

DVR CLIENT SETUP SCREEN FOR IPHONE

DVR CLIENT SETUP SCREEN FOR ANDROID

- DVR NAME:** Give your DVR any name you like.
DEVICE IP: Use the EXTERNAL IP address you wrote down on page one.
DEVICE PORT: Put in the VIDEO PORT you wrote down on page one.
USER NAME: The same username to login to your DVR (default: Admin)
PASSWORD: The same username to login to your DVR (default: 123456)

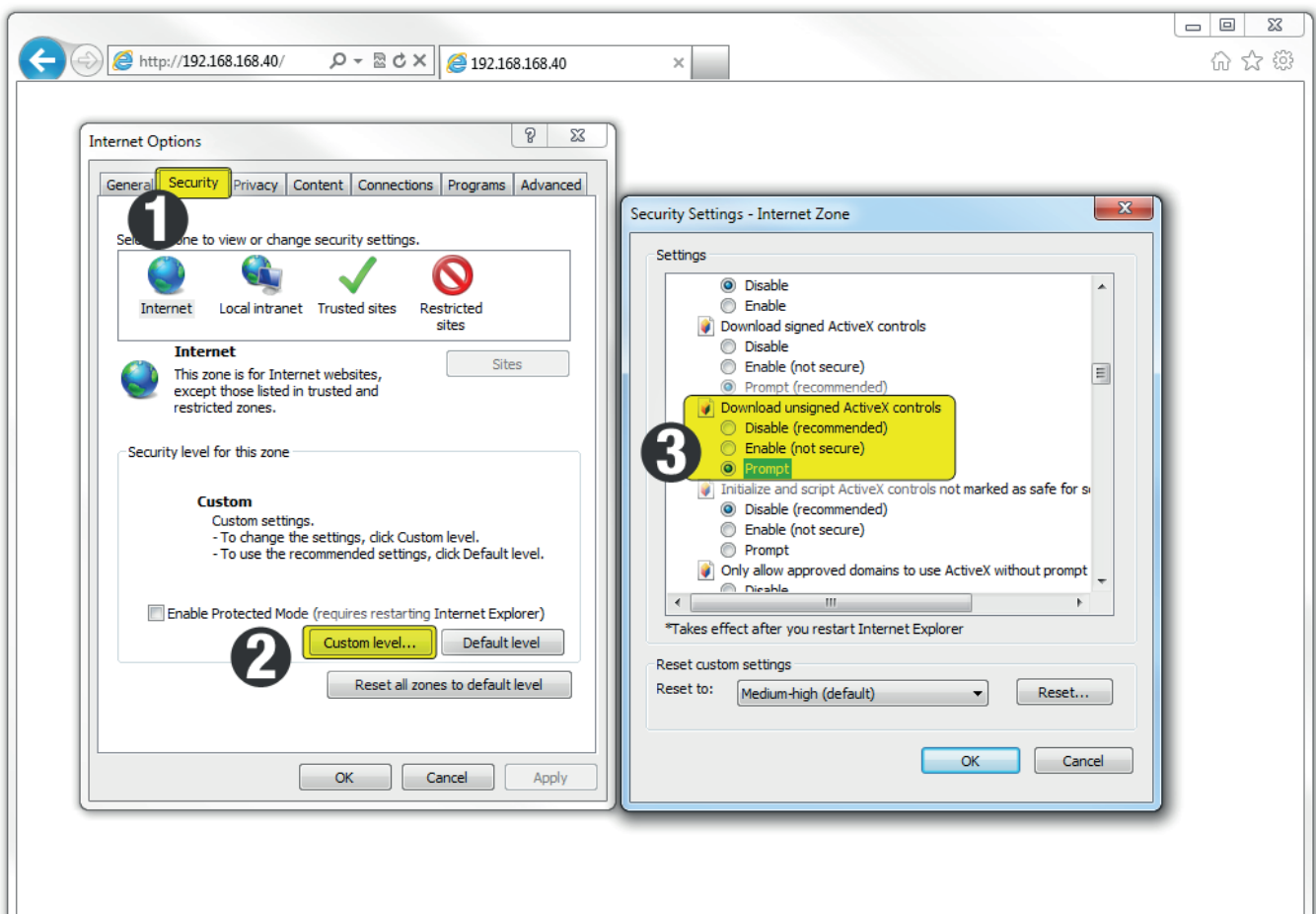
HOW TO INSTALL THE ACTIVE X CONTROL TO ACCESS THE WEB CLIENT



Follow this guide if you get the above error when trying to access your DVR via Internet Explorer.

Open up Internet Explorer and from the Tools menu click on Internet Options.

(If you are unable to see the Tools menu, press the ALT key on your keyboard to bring up the file menu.)



1. Click on the SECURITY tab
2. Choose the CUSTOM LEVEL option
3. Scroll down to DOWNLOAD UNSIGNED ACTIVE X CONTROLS and change it from disabled to PROMPT.

Hit OK and accept the security prompt.

Now reload the DVR page and install the ACTIVE X client. Follow the prompts and allow permissions where needed.

You should now be able to enter your DVR details and access it from any Windows PC with Internet Explorer.